

## PE100 pressure fittings

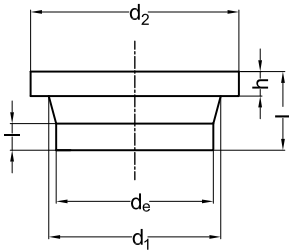
Stub flange short

for butt welding

PE100

SDR 33

water 3,2 bar



$d_e$	Art. Nr.	h	l	$d_1$	$d_2$	L
110	47 11 02 533	18	34	125	158	80
125	47 12 02 533	18	38	132	158	80
140	47 14 02 533	18	32	155	188	80
160	47 16 02 533	18	26	175	212	80
180	47 18 02 533	18	31	183	212	80
200	47 20 02 533	18	34	232	268	100
225	47 22 02 533	18	46	235	268	100
250	47 25 02 533	20	71	285	320	132
280	47 28 02 533	20	62	291	320	128
315	47 31 02 533	20	71	335	370	136
355	47 35 02 533	23	57	373	430	120
400	47 40 02 533	26	49	427	482	120
450	47 45 02 533	33	27	514	585	120
500	47 50 02 533	33	37	530	585	120
560	47 56 02 533	35	25	615	685	120
630	47 63 02 533	35	45	642	685	120
710	47 71 02 533 *	35	35	737	800	120
800	47 80 02 533 *	36	34	840	905	120
900	47 90 02 533 *	40	30	944	1005	120
1000	47 91 02 533 *	42	28	1047	1110	140
1200	47 92 02 533 *	50	20	1245	1330	140

\* fabrication on order, returning not possible

With grooved jointing face.

## PE100 pressure fittings

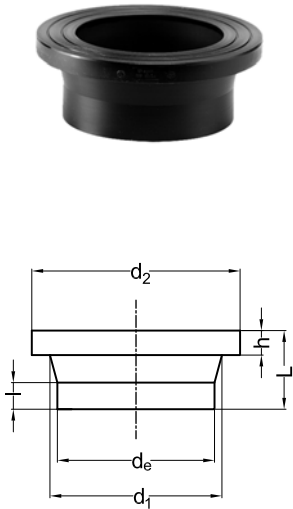
Stub flange short

for butt welding

PE100

SDR 17

water 10 bar/gas 5 bar



d <sub>e</sub>	Art. Nr.	h	l	d <sub>1</sub>	d <sub>2</sub>	L
40	47 04 02 517	11	24	50	78	50
50	47 05 02 517	12	21	61	88	50
63	47 06 02 517	14	16	75	102	50
75	47 07 02 517	16	14	89	122	50
90	47 09 02 517	17	33	105	138	80
110	47 11 02 517	18	27	125	158	80
125	47 12 02 517	18	42	132	158	80
140	47 14 02 517	18	34	155	188	80
160	47 16 02 517	18	34	175	212	80
180	47 18 02 517	20	60	182	212	80
200	47 20 02 517	24	36	232	268	100
225	47 22 02 517	24	46	235	268	100
250	47 25 02 517	25	35	285	320	100
280	47 28 02 517	25	45	291	320	100
315	47 31 02 517	25	35	335	370	100
355	47 35 02 517	30	30	373	430	120
400	47 40 02 517	33	42	427	482	120
450	47 45 02 517	46	14	514	585	120
500	47 50 02 517	46	24	530	585	120
560	47 56 02 517	50	10	615	685	120
630	47 63 02 517	50	30	642	685	120
710	47 71 02 517	*	20	737	800	120
800	47 80 02 517	*	18	840	905	120
900	47 90 02 517	*	15	944	1005	120
1000	47 91 02 517	*	60	1047	1110	140

\* fabrication on order, returning not possible

With grooved jointing face.

## PE100 pressure fittings

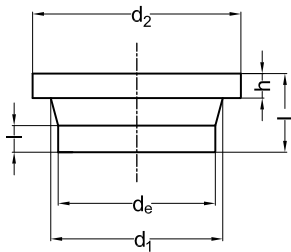
Stub flange short

for butt welding

PE100

SDR 11

water 16 bar/gas 10 bar



$d_e$	Art. Nr.	h	l	$d_1$	$d_2$	L
20	47 01 02 511	7	30	27	45	50
25	47 02 02 511	9	26	33	58	50
32	47 03 02 511	10	25	40	68	50
40	47 04 02 511	11	24	50	78	50
50	47 05 02 511	12	21	61	88	50
63	47 06 02 511	14	16	75	102	50
75	47 07 02 511	16	14	89	122	50
90	47 09 02 511	17	33	105	138	80
110	47 11 02 511	18	27	125	158	80
125	47 12 02 511	25	25	132	158	80
140	47 14 02 511	25	27	155	188	80
160	47 16 02 511	25	34	175	212	80
180	47 18 02 511	30	60	182	212	80
200	47 20 02 511	32	36	232	268	100
225	47 22 02 511	32	46	235	268	100
250	47 25 02 511	35	35	285	320	100
280	47 28 02 511	35	45	291	320	100
315	47 31 02 511	35	35	335	370	100
355	47 35 02 511	40	30	373	430	120
400	47 40 02 511	46	42	427	482	120
450	47 45 02 511	60	14	514	585	120
500	47 50 02 511	60	24	530	585	120
560	47 56 02 511	60	10	615	685	120
630	47 63 02 511	60	30	642	685	120
710	47 71 02 511 *	67	20	737	800	120

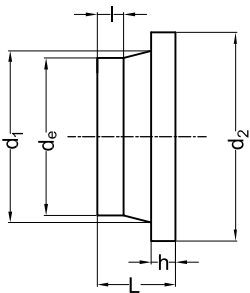
\* fabrication on order, returning not possible

With grooved jointing face.

## PE100 pressure fittings

**Stub flange short**  
for FIP butterfly valve type FE and FK  
for butt welding

PE100  
SDR 17  
water 10 bar



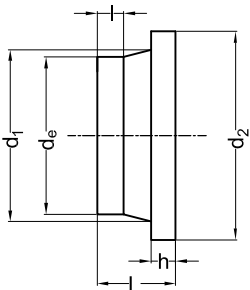
d <sub>e</sub> /DN	Art. Nr.	h	l	d <sub>1</sub>	d <sub>2</sub>	L
50/40	47 05 72 517	12	21	61	88	50
63/50	47 06 72 517	14	16	75	102	50
75/65	47 07 72 517	16	14	89	122	50
90/80	47 09 72 517	17	33	105	138	80
110/100	47 11 72 517	18	27	125	158	80
125/100	47 12 72 517	18	42	132	158	80
140/125	47 14 72 517	18	34	155	188	80
160/150	47 16 72 517	18	34	175	212	80
180/150	47 18 72 517	20	60	182	212	80
200/200	47 20 73 517	*	36	232	268	100
225/200	47 22 72 517	24	46	235	268	100
250/250	47 25 73 517	*	35	285	320	100
280/250	47 28 72 517	25	45	291	320	100
315/300	47 31 73 517	*	35	335	370	100

\* machined for free movement of disc

With flat jointing face.  
Suitable for installation on both sides of the butterfly valve.  
Dimensions are adapted to the profile backing ring for stub flange.

**Stub flange short**  
for FIP butterfly valve type FE and FK  
for butt welding

PE100  
SDR 11  
water 16 bar



d <sub>e</sub> /DN	Art. Nr.	h	l	d <sub>1</sub>	d <sub>2</sub>	L
50/40	47 05 72 511	12	21	61	88	50
63/50	47 06 72 511	14	16	75	102	50
75/65	47 07 72 511	16	14	89	122	50
90/80	47 09 72 511	17	33	105	138	80
110/100	47 11 72 511	18	27	125	158	80
125/100	47 12 72 511	25	25	132	158	80
140/125	47 14 72 511	25	27	155	188	80
160/150	47 16 73 511	*	34	175	212	80
180/150	47 18 72 511	30	60	182	212	80
200/200	47 20 73 511	*	36	232	268	100
225/200	47 22 73 511	*	46	235	268	100
250/250	47 25 73 511	*	35	285	320	100
280/250	47 28 73 511	*	45	291	320	100
315/300	47 31 73 511	*	35	335	370	100

\* machined for free movement of disc stem

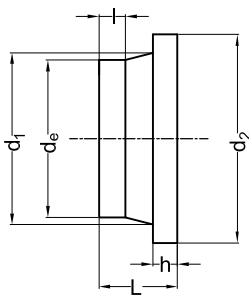
With flat jointing face.  
Suitable for installation on both sides of the butterfly valve.  
Dimensions are adapted to the profile backing ring for stub flange.

## PE100 pressure fittings

### Stub flange short

for entrance side FIP check valve type CR and FR  
for butt welding

PE100  
SDR 17  
water 10 bar



$d_e/DN$	Art. Nr.	h	l	$d_1$	$d_2$	L
50/40	47 05 72 517	12	21	61	88	50
63/50	47 06 72 517	14	16	75	102	50
75/65	47 07 72 517	16	14	89	122	50
90/80	47 09 72 517	17	33	105	138	80
110/100	47 11 72 517	18	27	125	158	80
125/100	47 12 72 517	18	42	132	158	80
140/125	47 14 72 517	18	34	155	188	80
160/150	47 16 72 517	18	34	175	212	80
180/150	47 18 72 517	20	60	182	212	80
200/200	47 20 72 517	24	36	232	268	100
225/200	47 22 72 517	24	46	235	268	100
250/250	47 25 72 517	25	35	285	320	100
280/250	47 28 72 517	25	45	291	320	100
315/300	47 31 72 517	25	35	335	370	100

With flat jointing face.

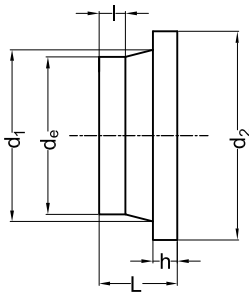
Suitable for installation on entrance side. Install stub flange extended short CR/FR on exit side.

Dimensions are adapted to the profile backing ring for stub flange.

### Stub flange short

for entrance side FIP check valve type CR and FR  
for butt welding

PE100  
SDR 11  
water 16 bar



$d_e/DN$	Art. Nr.	h	l	$d_1$	$d_2$	L
50/40	47 05 72 511	12	21	61	88	50
63/50	47 06 72 511	14	16	75	102	50
75/65	47 07 72 511	16	14	89	122	50
90/80	47 09 72 511	17	33	105	138	80
110/100	47 11 72 511	18	27	125	158	80
125/100	47 12 72 511	25	25	132	158	80
140/125	47 14 72 511	25	27	155	188	80
160/150	47 16 72 511	25	34	175	212	80
180/150	47 18 72 511	30	60	182	212	80
200/200	47 20 72 511	32	36	232	268	100
225/200	47 22 72 511	32	46	235	268	100
250/250	47 25 72 511	35	35	285	320	100
280/250	47 28 72 511	35	45	291	320	100
315/300	47 31 72 511	35	35	335	370	100

With flat jointing face.

Suitable for installation on entrance side. Install stub flange extended short CR/FR on exit side. Dimensions are adapted to the profile backing ring for stub flange.

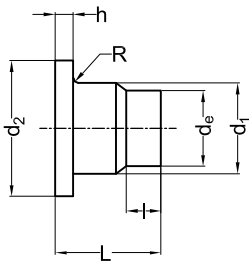
## PE100 pressure fittings

**Stub flange extended short**  
for exit side FIP check valve type CR and FR  
for butt welding

PE100  
SDR 17  
water 10 bar



$d_e$ /DN	Art. Nr.	h	l	$d_1$	$d_2$	L	R
50/40	47 05 71 517	12	20	61	90	50	3
63/50	47 06 71 517	14	20	75	105	54	4
75/65	47 07 71 517	16	20	89	125	58	4
90/80	47 09 71 517	17	40	105	138	92	4
110/100	47 11 71 517	18	40	125	160	92	4
140/125	47 14 71 517	18	40	155	190	100	4
160/150	47 16 71 517	18	40	175	215	120	4
225/200	47 22 71 517	24	40	235	270	165	4
280/250	47 28 71 517	25	40	291	325	195	6
315/300	47 31 71 517	25	40	335	375	250	6



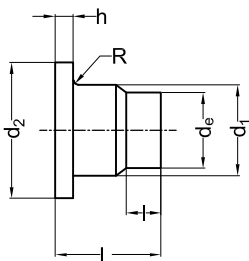
With flat jointing face. Extended for free movement of disc.  
Suitable for installation on exit side. Install stub flange short CR/FR on entrance side.  
Dimensions are adapted to the profile backing ring for stub flange.  
Fabrication on order.

**Stub flange extended short**  
for exit side FIP check valve type CR and FR  
for butt welding

PE100  
SDR 11  
water 16 bar



$d_e$ /DN	Art. Nr.	h	l	$d_1$	$d_2$	L	R
50/40	47 05 71 511	12	20	61	90	50	3
63/50	47 06 71 511	14	20	75	105	56	4
75/65	47 07 71 511	16	20	89	125	65	4
90/80	47 09 71 511	17	35	105	138	92	4
110/100	47 11 71 511	18	35	125	160	92	4
140/125	47 14 71 511	18	40	155	190	110	4
160/150	47 16 71 511	18	40	175	215	120	4
225/200	47 22 71 511	26	56	235	270	180	4
280/250	47 28 71 511	35	40	291	325	220	6
315/300	47 31 71 511	35	40	335	375	270	6



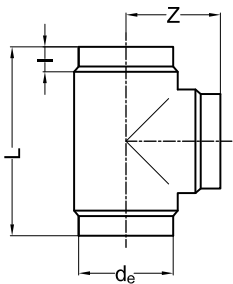
With flat jointing face. Extended for free movement of disc.  
Suitable for installation on exit side. Install stub flange short CR/FR on entrance side.  
Dimensions are adapted to the profile backing ring for stub flange.  
Fabrication on order.

## PE100 pressure fittings

Tee 90° short

for butt welding

PE100  
SDR 33  
water 3,2 bar

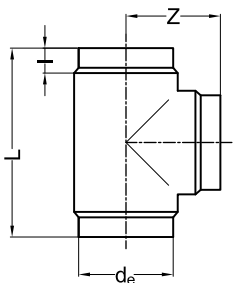


d <sub>e</sub>	Art. Nr.	L	Z	I
110	39 11 01 533	249	121	50
125	39 12 01 533	262	132	47
140	39 14 01 533	293	145	48
160	39 16 01 533	318	160	55
180	39 18 01 533	356	175	59
200	39 20 01 533	385	194	55
225	39 22 01 533	442	212	59
250	39 25 01 533	465	232	70
280	39 28 01 533	536	268	80
315	39 31 01 533	530	263	75
355	39 35 01 533	658	330	95
400	39 40 01 533	690	345	104
450	39 45 01 533	890	450	130
500	39 50 01 533	895	450	130

Tee 90° short

for butt welding

PE100  
SDR 17  
water 10 bar/gas 5 bar



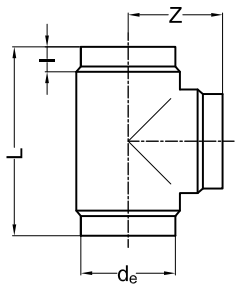
d <sub>e</sub>	Art. Nr.	L	Z	I
40	39 04 01 517	88	44	16
50	39 05 01 517	116	58	21
63	39 06 01 517	146	73	24
75	39 07 01 517	170	85	28
90	39 09 01 517	200	100	23
110	39 11 01 517	240	120	43
125	39 12 01 517	250	125	26
140	39 14 01 517	280	140	32
160	39 16 01 517	320	160	40
180	39 18 01 517	390	195	73
200	39 20 01 517	430	215	64
225	39 22 01 517	490	245	72
250	39 25 01 517	550	275	86
280	39 28 01 517	620	310	105
315	39 31 01 517	630	350	111
355	39 35 01 517	658	330	95
400	39 40 01 517	690	345	104
450	39 45 01 517	890	450	130
500	39 50 01 517	895	450	130

## PE100 pressure fittings

Tee 90° short

for butt welding

PE100  
SDR 11  
water 16 bar/gas 10 bar

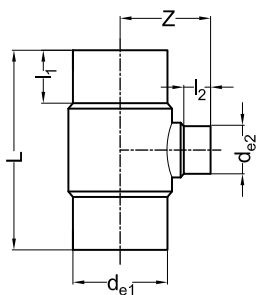


d <sub>e</sub>	Art. Nr.	L	Z	I
20	39 01 01 511	50	25	8
25	39 02 01 511	60	30	10
32	39 03 01 511	80	40	12
40	39 04 01 511	88	44	16
50	39 05 01 511	116	58	21
63	39 06 01 511	146	73	24
75	39 07 01 511	170	85	28
90	39 09 01 511	200	100	23
110	39 11 01 511	240	120	43
125	39 12 01 511	250	125	26
140	39 14 01 511	280	140	32
160	39 16 01 511	320	160	40
180	39 18 01 511	390	195	73
200	39 20 01 511	550	215	64
225	39 22 01 511	620	245	72
250	39 25 01 511	550	275	86
280	39 28 01 511	620	310	105
315	39 31 01 511	700	350	111
355	39 35 01 511	680	340	101
400	39 40 01 511	680	338	95
450	39 45 01 511	900	450	130
500	39 50 01 511	900	450	130

Tee 90° reduced short

with reduced branch  
for butt welding

PE100  
SDR 17  
water 10 bar/gas 5 bar



d <sub>e1</sub> /d <sub>e2</sub>	Art. Nr.	L	Z	I <sub>1</sub>	I <sub>2</sub>
90/32	28 09 03 517	213	85	53	23
90/50	28 09 05 517	214	93	53	28
110/32	28 11 03 517	244	94	66	22
110/50	28 11 05 517	238	103	66	27
110/63	28 11 06 517	240	105	48	32
110/90	28 11 09 517	240	115	48	38
125/63	28 12 06 517	264	110	70	31
125/90	28 12 09 517	265	124	72	32
140/63	28 14 06 517	300	120	83	32
140/75	28 14 07 517	300	130	81	35
140/90	28 14 09 517	300	130	81	41
140/110	28 14 11 517	300	137	50	47
160/110	28 16 11 517	320	145	56	38
160/125	28 16 12 517	315	150	58	47
180/63	28 18 06 517	358	134	125	30
180/75	28 18 07 517	360	140	112	30
180/110	28 18 11 517	365	158	106	48
180/125	28 18 12 517	358	156	92	50
200/63	28 20 06 517	382	145	143	31
200/90	28 20 09 517	390	162	126	40
200/110	28 20 11 517	390	160	122	40
200/125	28 20 12 517	390	165	114	43
200/160	28 20 16 517	390	165	98	60
225/90	28 22 09 517	450	178	75	28
225/110	28 22 11 517	440	264	89	89

-- to be continued --

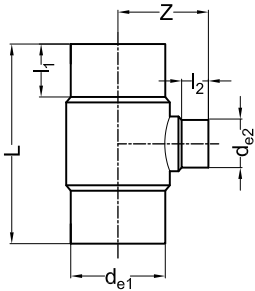
## PE100 pressure fittings

Tee 90° reduced short - continuation -

$d_{e1}/d_{e2}$	Art. Nr.	L	Z	$l_1$	$l_2$
225/125	28 22 12 517	445	180	135	40
225/160	28 22 16 517	470	200	89	60
250/110	28 25 11 517	455	197	135	38
250/160	28 25 16 517	455	219	110	58

**Tee 90° reduced short**  
with reduced branch  
for butt welding

PE100  
SDR 11  
water 16 bar/gas 10 bar

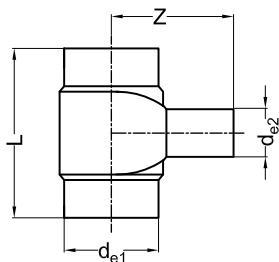


$d_{e1}/d_{e2}$	Art. Nr.	L	Z	$l_1$	$l_2$
90/32	28 09 03 511	213	85	53	23
90/50	28 09 05 511	213	90	53	28
110/32	28 11 03 511	244	94	66	22
110/50	28 11 05 511	244	103	66	27
110/63	28 11 06 511	240	105	48	32
110/90	28 11 09 511	240	115	48	38
125/63	28 12 06 511	278	112	70	31
125/90	28 12 09 511	265	124	72	32
140/63	28 14 06 511	305	120	83	32
140/75	28 14 07 511	305	130	81	35
140/90	28 14 09 511	305	130	81	41
140/110	28 14 11 511	305	140	50	47
160/110	28 16 11 511	320	145	56	38
160/125	28 16 12 511	325	150	58	47
180/63	28 18 06 511	358	134	125	30
180/75	28 18 07 511	352	140	112	30
180/110	28 18 11 511	365	158	106	48
180/125	28 18 12 511	366	166	92	50
200/63	28 20 06 511	382	145	143	31
200/90	28 20 09 511	390	162	126	40
200/110	28 20 11 511	390	160	122	40
200/125	28 20 12 511	390	165	114	43
200/160	28 20 16 511	390	180	98	60
225/90	28 22 09 511	450	178	75	28
225/110	28 22 11 511	440	264	89	88
225/125	28 22 12 511	456	178	135	40
225/160	28 22 16 511	470	200	89	60
250/110	28 25 11 511	463	197	135	38
250/160	28 25 16 511	458	219	110	58

## PE100 pressure fittings

Tee 90° reduced short - pressure rating guaranteed  
with reduced branch  
for butt welding

PE100  
SDR 17  
water 10 bar/gas 5 bar



$d_{e1}/d_{e2}$	Art. Nr.	L	Z
280/63	40 28 06 517	270	365
280/75	40 28 07 517	280	365
280/90	40 28 09 517	295	365
280/110	40 28 11 517	315	365
280/125	40 28 12 517	330	365
280/140	40 28 14 517	345	365
280/160	40 28 16 517	365	365
280/180	40 28 18 517	385	365
280/200	40 28 20 517	405	365
280/225	40 28 22 517	430	365
315/75	40 31 07 517	280	380
315/90	40 31 09 517	295	380
315/110	40 31 11 517	315	380
315/125	40 31 12 517	330	380
315/140	40 31 14 517	345	380
315/160	40 31 16 517	365	380
315/180	40 31 18 517	385	380
315/200	40 31 20 517	405	380
315/225	40 31 22 517	430	380
315/250	40 31 25 517	455	380
355/90	40 35 09 517	305	400
355/110	40 35 11 517	325	400
355/125	40 35 12 517	340	400
355/140	40 35 14 517	355	400
355/160	40 35 16 517	375	400
355/180	40 35 18 517	395	400
355/200	40 35 20 517	415	400
355/225	40 35 22 517	440	400
355/250	40 35 25 517	465	400
355/280	40 35 28 517	500	400
400/110	40 40 11 517	325	425
400/125	40 40 12 517	340	425
400/140	40 40 14 517	355	425
400/160	40 40 16 517	375	425
400/180	40 40 18 517	395	425
400/200	40 40 20 517	415	425
400/225	40 40 22 517	440	425
400/250	40 40 25 517	465	425
400/280	40 40 28 517	500	425
400/315	40 40 31 517	535	425
450/125	40 45 12 517	340	450
450/140	40 45 14 517	355	450
450/160	40 45 16 517	375	450
450/180	40 45 18 517	395	450
450/200	40 45 20 517	415	450
450/225	40 45 22 517	440	450
450/250	40 45 25 517	465	450
450/280	40 45 28 517	500	450
450/315	40 45 31 517	535	450
450/355	40 45 35 517	575	450
500/140	40 50 14 517	355	475
500/160	40 50 16 517	375	475
500/180	40 50 18 517	395	475
500/200	40 50 20 517	415	475
500/225	40 50 22 517	440	475
500/250	40 50 25 517	465	475

-- to be continued --

**PE100 pressure fittings**

Tee 90° reduced short - pressure rating guaranteed - continuation -

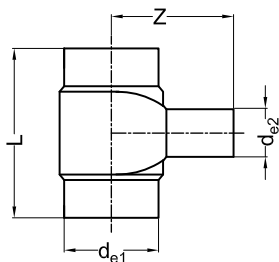
<b>d<sub>e1</sub>/d<sub>e2</sub></b>	<b>Art. Nr.</b>	<b>L</b>	<b>Z</b>
500/280	40 50 28 517	500	475
500/315	40 50 31 517	535	475
500/355	40 50 35 517	575	475
500/400	40 50 40 517	620	475
560/160	40 56 16 517	375	500
560/180	40 56 18 517	395	500
560/200	40 56 20 517	415	500
560/225	40 56 22 517	440	500
560/250	40 56 25 517	465	500
560/280	40 56 28 517	500	500
560/315	40 56 31 517	535	500
560/355	40 56 35 517	575	500
560/400	40 56 40 517	620	500
560/450	40 56 45 517	670	500
560/560	40 56 56 517	780	500
630/180	40 63 18 517	395	540
630/200	40 63 20 517	415	540
630/225	40 63 22 517	440	540
630/250	40 63 25 517	465	540
630/280	40 63 28 517	500	540
630/315	40 63 31 517	535	540
630/355	40 63 35 517	575	540
630/400	40 63 40 517	620	540
630/450	40 63 45 517	670	540
630/500	40 63 50 517	720	540
630/630	40 63 63 517	850	540
710/180	40 71 18 517	395	620
710/200	40 71 20 517	415	620
710/225	40 71 22 517	440	620
710/250	40 71 25 517	465	620
710/280	40 71 28 517	500	620
710/315	40 71 31 517	535	620
710/355	40 71 35 517	575	620
710/400	40 71 40 517	620	620
710/450	40 71 45 517	670	620
710/500	40 71 50 517	720	620
710/560	40 71 56 517	780	620
710/710	40 71 71 517	950	650

Pressure rating guaranteed, branch extended with pipe.  
Fabrication on order, returning not possible.

## PE100 pressure fittings

Tee 90° reduced short - pressure rating guaranteed  
with reduced branch  
for butt welding

PE100  
SDR 11  
water 16 bar/gas 10 bar



$d_{e1}/d_{e2}$	Art. Nr.	L	Z
280/63	40 28 06 511	270	365
280/75	40 28 07 511	280	365
280/90	40 28 09 511	295	365
280/110	40 28 11 511	315	365
280/125	40 28 12 511	330	365
280/140	40 28 14 511	345	365
280/160	40 28 16 511	365	365
280/180	40 28 18 511	385	365
280/200	40 28 20 511	405	365
280/225	40 28 22 511	430	365
315/75	40 31 07 511	280	380
315/90	40 31 09 511	295	380
315/110	40 31 11 511	315	380
315/125	40 31 12 511	330	380
315/140	40 31 14 511	345	380
315/160	40 31 16 511	365	380
315/180	40 31 18 511	385	380
315/200	40 31 20 511	405	380
315/225	40 31 22 511	430	380
315/250	40 31 25 511	455	380
355/90	40 35 09 511	305	400
355/110	40 35 11 511	325	400
355/125	40 35 12 511	340	400
355/140	40 35 14 511	355	400
355/160	40 35 16 511	375	400
355/180	40 35 18 511	395	400
355/200	40 35 20 511	415	400
355/225	40 35 22 511	440	400
355/250	40 35 25 511	465	400
355/280	40 35 28 511	500	400
400/110	40 40 11 511	325	425
400/125	40 40 12 511	340	425
400/140	40 40 14 511	355	425
400/160	40 40 16 511	375	425
400/180	40 40 18 511	395	425
400/200	40 40 20 511	415	425
400/225	40 40 22 511	440	425
400/250	40 40 25 511	465	425
400/280	40 40 28 511	500	425
400/315	40 40 31 511	535	425
450/125	40 45 12 511	340	450
450/140	40 45 14 511	355	450
450/160	40 45 16 511	375	450
450/180	40 45 18 511	395	450
450/200	40 45 20 511	415	450
450/225	40 45 22 511	440	450
450/250	40 45 25 511	465	450
450/280	40 45 28 511	500	450
450/315	40 45 31 511	535	450
450/355	40 45 35 511	575	450
500/140	40 50 14 511	355	475
500/160	40 50 16 511	375	475
500/180	40 50 18 511	395	475
500/200	40 50 20 511	415	475
500/225	40 50 22 511	440	475
500/250	40 50 25 511	465	475

-- to be continued --

**PE100 pressure fittings**

Tee 90° reduced short - pressure rating guaranteed - continuation -

<b>d<sub>e1</sub>/d<sub>e2</sub></b>	<b>Art. Nr.</b>	<b>L</b>	<b>Z</b>
500/280	40 50 28 511	500	475
500/315	40 50 31 511	535	475
500/355	40 50 35 511	575	475
500/400	40 50 40 511	620	475
560/160	40 56 16 511	375	500
560/180	40 56 18 511	395	500
560/200	40 56 20 511	415	500
560/225	40 56 22 511	440	500
560/250	40 56 25 511	465	500
560/280	40 56 28 511	500	500
560/315	40 56 31 511	535	500
560/355	40 56 35 511	575	500
560/400	40 56 40 511	620	500
560/450	40 56 45 511	670	500
560/560	40 56 56 511	780	500
630/180	40 63 18 511	395	540
630/200	40 63 20 511	415	540
630/225	40 63 22 511	440	540
630/250	40 63 25 511	465	540
630/280	40 63 28 511	500	540
630/315	40 63 31 511	535	540
630/355	40 63 35 511	575	540
630/400	40 63 40 511	620	540
630/450	40 63 45 511	670	540
630/500	40 63 50 511	720	540
630/630	40 63 63 511	850	540
710/180	40 71 18 511	395	620
710/200	40 71 20 511	415	620
710/225	40 71 22 511	440	620
710/250	40 71 25 511	465	620
710/280	40 71 28 511	500	620
710/315	40 71 31 511	535	620
710/355	40 71 35 511	575	620
710/400	40 71 40 511	620	620
710/450	40 71 45 511	670	620
710/500	40 71 50 511	720	620
710/560	40 71 56 511	780	620
710/710	40 71 71 511	950	650

Pressure rating guaranteed, branch extended with pipe.  
Fabrication on order, returning not possible.

## PE100 pressure fittings

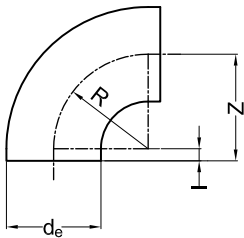
Bend 90° short

for butt welding

PE100

SDR 33

water 3,2 bar



$d_e$	Art. Nr.	Z	I	R
110	11 11 91 533	120	10	110
125	11 12 91 533	140	15	125
140	11 14 91 533	150	10	140
160	11 16 91 533	180	25	155
180	11 18 91 533	200	25	175
200	11 20 91 533	220	23	197
225	11 22 91 533	250	20	230
250	11 25 91 533	290	25	265
280	11 28 91 533	290	10	280
315	11 31 91 533	340	40	300
355	11 35 91 533	340	40	300
400	11 40 91 533	345	45	300
450	11 45 91 533	450	50	400
500	11 50 91 533	450	50	400

$$R \approx 1 \times d_e$$

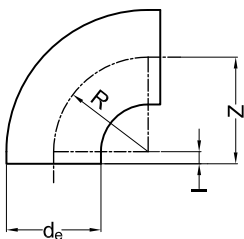
Bend 90° short

for butt welding

PE100

SDR 17

water 10 bar/gas 5 bar



$d_e$	Art. Nr.	Z	I	R
40	11 04 91 517	51	7	44
50	11 05 91 517	62	7	55
63	11 06 91 517	77	8	69
75	11 07 91 517	85	10	75
90	11 09 91 517	100	10	90
110	11 11 91 517	120	10	110
125	11 12 91 517	140	15	125
140	11 14 91 517	155	15	140
160	11 16 91 517	175	15	160
180	11 18 91 517	195	15	180
200	11 20 91 517	215	15	200
225	11 22 91 517	245	20	225
250	11 25 91 517	275	25	250
280	11 28 91 517	310	30	280
315	11 31 91 517	350	35	315
355	11 35 91 517	340	40	300
400	11 40 91 517	345	45	300
450	11 45 91 517	450	50	400
500	11 50 91 517	450	50	400

$$R \approx 1 \times d_e$$

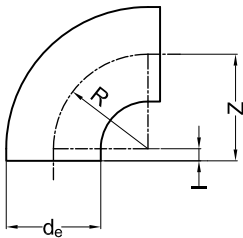
**PE100 pressure fittings**
**Bend 90° short**

PE100

for butt welding

SDR 11

water 16 bar/gas 10 bar



$d_e$	Art. Nr.	Z	L	R
20	11 01 91 511	27	3	24
25	11 02 91 511	32	5	27
32	11 03 91 511	40	5	35
40	11 04 91 511	51	7	44
50	11 05 91 511	62	7	55
63	11 06 91 511	77	8	69
75	11 07 91 511	85	10	75
90	11 09 91 511	100	10	90
110	11 11 91 511	120	10	110
125	11 12 91 511	140	15	125
140	11 14 91 511	155	15	140
160	11 16 91 511	175	15	160
180	11 18 91 511	195	15	180
200	11 20 91 511	215	15	200
225	11 22 91 511	245	20	225
250	11 25 91 511	275	25	250
280	11 28 91 511	310	30	280
315	11 31 91 511	350	35	315
355	11 35 91 511	340	40	300
400	11 40 91 511	345	45	300
450	11 45 91 511	450	50	400
500	11 50 91 511	450	50	400

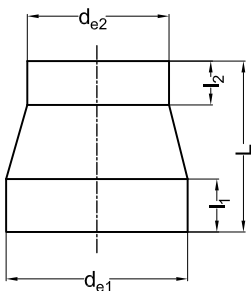
 $R \approx 1 \times d_e$

## PE100 pressure fittings

Reducer concentric short

for butt welding

PE100  
SDR 33  
water 3,2 bar

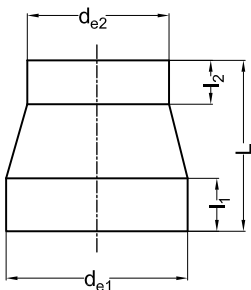


d <sub>e1</sub> /d <sub>e2</sub>	Art. Nr.	L	l <sub>1</sub>	l <sub>2</sub>
200/140	17 20 14 533	154	50	35
200/160	17 20 16 533	151	50	40
200/180	17 20 18 533	151	50	45
225/140	17 22 14 533	160	60	50
225/160	17 22 16 533	171	55	40
225/180	17 22 18 533	171	55	45
225/200	17 22 20 533	171	55	50
250/160	17 25 16 533	194	60	40
250/180	17 25 18 533	182	60	45
250/200	17 25 20 533	182	60	50
250/225	17 25 22 533	182	60	55
280/200	17 28 20 533	200	80	65
280/225	17 28 22 533	200	80	75
280/250	17 28 25 533	200	80	85
315/200	17 31 20 533	230	95	85
315/225	17 31 22 533	230	95	88
315/250	17 31 25 533	230	95	95
315/280	17 31 28 533	230	95	107

Reducer concentric short

for butt welding

PE100  
SDR 17  
water 10 bar/gas 5 bar



d <sub>e1</sub> /d <sub>e2</sub>	Art. Nr.	L	l <sub>1</sub>	l <sub>2</sub>
40/20	17 04 01 517	50	12	12
40/25	17 04 02 517	50	12	12
40/32	17 04 03 517	50	12	12
50/25	17 05 02 517	55	12	12
50/32	17 05 03 517	55	12	12
50/40	17 05 04 517	55	12	12
63/32	17 06 03 517	65	16	12
63/40	17 06 04 517	65	16	12
63/50	17 06 05 517	65	16	12
75/32	17 07 03 517	80	19	12
75/40	17 07 04 517	71	19	12
75/50	17 07 05 517	71	19	12
75/63	17 07 06 517	71	19	16
90/50	17 09 05 517	80	22	12
90/63	17 09 06 517	80	22	16
90/75	17 09 07 517	80	22	19
110/50	17 11 05 517	105	28	12
110/63	17 11 06 517	97	28	16
110/75	17 11 07 517	97	28	19
110/90	17 11 09 517	97	28	22
125/63	17 12 06 517	112	30	16
125/75	17 12 07 517	108	32	19
125/90	17 12 09 517	108	32	22
125/110	17 12 11 517	108	32	28
140/75	17 14 07 517	123	35	19
140/90	17 14 09 517	115	35	22
140/110	17 14 11 517	115	35	28

-- to be continued --

## PE100 pressure fittings

Reducer concentric short - continuation -

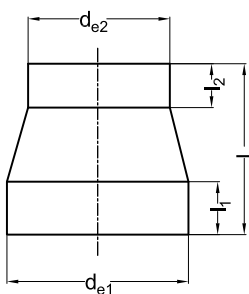
$d_{e1}/d_{e2}$	Art. Nr.	L	$l_1$	$l_2$
140/125	17 14 12 517	115	35	32
160/90	17 16 09 517	135	40	22
160/110	17 16 11 517	124	40	28
160/125	17 16 12 517	124	40	32
160/140	17 16 14 517	124	40	35
180/90	17 18 09 517	157	45	22
180/110	17 18 11 517	157	45	28
180/125	17 18 12 517	136	45	32
180/140	17 18 14 517	136	45	35
180/160	17 18 16 517	136	45	40
200/140	17 20 14 517	154	50	35
200/160	17 20 16 517	151	50	40
200/180	17 20 18 517	151	50	45
225/140	17 22 14 517	160	60	50
225/160	17 22 16 517	171	55	40
225/180	17 22 18 517	171	55	45
225/200	17 22 20 517	171	55	50
250/160	17 25 16 517	194	60	40
250/180	17 25 18 517	182	60	45
250/200	17 25 20 517	182	60	50
250/225	17 25 22 517	182	60	55
280/200	17 28 20 517 *	200	85	70
280/225	17 28 22 517 *	200	85	72
280/250	17 28 25 517 *	200	85	80
315/200	17 31 20 517 *	230	95	85
315/225	17 31 22 517 *	230	95	88
315/250	17 31 25 517 *	230	95	95
315/280	17 31 28 517 *	230	95	107

\* machined version

### Reducer concentric short

for butt welding

PE100  
SDR 11  
water 16 bar/gas 10 bar



$d_{e1}/d_{e2}$	Art. Nr.	L	$l_1$	$l_2$
25/20	17 02 01 511	37	12	12
32/20	17 03 01 511	43	12	12
32/25	17 03 02 511	43	12	12
40/20	17 04 01 511	50	12	12
40/25	17 04 02 511	50	12	12
40/32	17 04 03 511	50	12	12
50/25	17 05 02 511	55	12	12
50/32	17 05 03 511	55	12	12
50/40	17 05 04 511	55	12	12
63/32	17 06 03 511	65	16	12
63/40	17 06 04 511	65	16	12
63/50	17 06 05 511	65	16	12
75/32	17 07 03 511	80	19	12
75/40	17 07 04 511	71	19	12
75/50	17 07 05 511	71	19	12
75/63	17 07 06 511	71	19	16
90/50	17 09 05 511	80	22	12
90/63	17 09 06 511	80	22	16
90/75	17 09 07 511	80	22	19
110/50	17 11 05 511	105	28	12
110/63	17 11 06 511	97	28	16
110/75	17 11 07 511	97	28	19
110/90	17 11 09 511	97	28	22

-- to be continued --

## PE100 pressure fittings

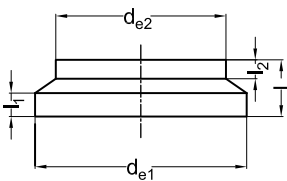
Reducer concentric short - continuation -

$d_{e1}/d_{e2}$	Art. Nr.	L	$l_1$	$l_2$
125/63	17 12 06 511	112	30	16
125/75	17 12 07 511	108	32	19
125/90	17 12 09 511	108	32	22
125/110	17 12 11 511	108	32	28
140/75	17 14 07 511	123	35	19
140/90	17 14 09 511	115	35	22
140/110	17 14 11 511	115	35	28
140/125	17 14 12 511	115	35	32
160/90	17 16 09 511	135	40	22
160/110	17 16 11 511	124	40	28
160/125	17 16 12 511	124	40	32
160/140	17 16 14 511	124	40	35
180/90	17 18 09 511	157	45	22
180/110	17 18 11 511	157	45	28
180/125	17 18 12 511	136	45	32
180/140	17 18 14 511	136	45	35
180/160	17 18 16 511	136	45	40
200/140	17 20 14 511	154	50	35
200/160	17 20 16 511	151	50	40
200/180	17 20 18 511	151	50	45
225/140	17 22 14 511	160	60	50
225/160	17 22 16 511	171	55	40
225/180	17 22 18 511	171	55	45
225/200	17 22 20 511	171	55	50
250/160	17 25 16 511	194	60	40
250/180	17 25 18 511	182	60	45
250/200	17 25 20 511	182	60	50
250/225	17 25 22 511	182	60	55
280/200	17 28 20 511 *	200	85	70
280/225	17 28 22 511 *	200	85	72
280/250	17 28 25 511 *	200	85	80
315/200	17 31 20 511 *	230	95	85
315/225	17 31 22 511 *	230	95	88
315/250	17 31 25 511 *	230	95	95
315/280	17 31 28 511 *	230	95	107

\* machined version

**PE100 pressure fittings**
**Reducer concentric short**

for butt welding

 PE100  
 SDR 33  
 water 3,2 bar


$d_{e1}/d_{e2}$	Art. Nr.	L	$I_1$	$I_2$
355/200	15 35 20 533	160	57	40
355/225	15 35 22 533	140	57	40
355/250	15 35 25 533	130	54	40
355/280	15 35 28 533	120	53	40
355/315	15 35 31 533	110	53	40
400/225	15 40 22 533	160	64	40
400/250	15 40 25 533	150	61	40
400/280	15 40 28 533	140	60	40
400/315	15 40 31 533	120	50	40
400/355	15 40 35 533	110	51	40
450/280	15 45 28 533	160	65	40
450/315	15 45 31 533	140	55	40
450/355	15 45 35 533	130	57	40
450/400	15 45 40 533	120	60	40
500/280	15 50 28 533	180	80	40
500/315	15 50 31 533	170	71	40
500/355	15 50 35 533	150	62	40
500/400	15 50 40 533	140	65	40
500/450	15 50 45 533	120	60	40
560/355	15 56 35 533	170	75	40
560/400	15 56 40 533	160	68	40
560/450	15 56 45 533	140	62	40
560/500	15 56 50 533	130	67	40
630/355	15 63 35 533	200	80	40
630/400	15 63 40 533	190	78	40
630/450	15 63 45 533	170	72	40
630/500	15 63 50 533	150	67	40
630/560	15 63 56 533	130	64	40
710/500	15 71 50 533 *	130	84	40
710/560	15 71 56 533 *	170	81	40
710/630	15 71 63 533 *	140	71	40
800/560	15 80 56 533 *	200	85	40
800/630	15 80 63 533 *	180	85	40
800/710	15 80 71 533 *	150	78	40
900/630	15 90 63 533 *	220	96	40
900/710	15 90 71 533 *	190	89	40
900/800	15 90 80 533 *	160	85	40
1000/710	15 91 71 533 *	220	101	40
1000/800	15 91 80 533 *	180	86	40
1000/900	15 91 90 533 *	140	75	40
1200/1000	15 92 91 533 *	190	92	40

\* fabrication on order, returning not possible

## PE100 pressure fittings

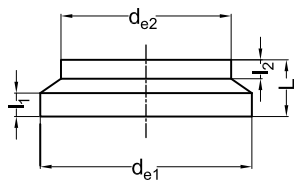
Reducer concentric short

for butt welding

PE100

SDR 17

water 10 bar/gas 5 bar



d <sub>e1</sub> /d <sub>e2</sub>	Art. Nr.	L	I <sub>1</sub>	I <sub>2</sub>
355/200	15 35 20 517	160	57	40
355/225	15 35 22 517	140	57	40
355/250	15 35 25 517	130	54	40
355/280	15 35 28 517	120	53	40
355/315	15 35 31 517	110	53	40
400/225	15 40 22 517	160	64	40
400/250	15 40 25 517	150	61	40
400/280	15 40 28 517	140	60	40
400/315	15 40 31 517	120	50	40
400/355	15 40 35 517	110	51	40
450/280	15 45 28 517	160	65	40
450/315	15 45 31 517	140	55	40
450/355	15 45 35 517	130	57	40
450/400	15 45 40 517	120	60	40
500/280	15 50 28 517	180	80	40
500/315	15 50 31 517	170	71	40
500/355	15 50 35 517	150	62	40
500/400	15 50 40 517	140	65	40
500/450	15 50 45 517	120	60	40
560/355	15 56 35 517	170	75	40
560/400	15 56 40 517	160	68	40
560/450	15 56 45 517	140	62	40
560/500	15 56 50 517	130	67	40
630/355	15 63 35 517	200	80	40
630/400	15 63 40 517	190	78	40
630/450	15 63 45 517	170	72	40
630/500	15 63 50 517	150	67	40
630/560	15 63 56 517	130	64	40
710/500	15 71 50 517 *	130	84	40
710/560	15 71 56 517 *	170	81	40
710/630	15 71 63 517 *	140	71	40
800/560	15 80 56 517 *	200	85	40
800/630	15 80 63 517 *	180	85	40
800/710	15 80 71 517 *	150	78	40
900/630	15 90 63 517 *	220	96	40
900/710	15 90 71 517 *	190	89	40
900/800	15 90 80 517 *	160	85	40
1000/710	15 91 71 517 *	220	101	40
1000/800	15 91 80 517 *	180	86	40
1000/900	15 91 90 517 *	140	75	40

\* fabrication on order, returning not possible

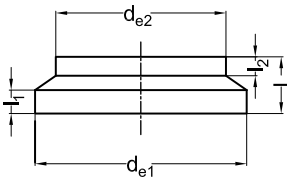
**PE100 pressure fittings**
**Reducer concentric short**

for butt welding

PE100

SDR 11

water 16 bar/gas 10 bar



$d_{e1}/d_{e2}$	Art. Nr.	L	$l_1$	$l_2$
355/200	15 35 20 511	160	57	40
355/225	15 35 22 511	140	57	40
355/250	15 35 25 511	130	54	40
355/280	15 35 28 511	120	53	40
355/315	15 35 31 511	110	53	40
400/225	15 40 22 511	160	64	40
400/250	15 40 25 511	150	61	40
400/280	15 40 28 511	140	60	40
400/315	15 40 31 511	120	50	40
400/355	15 40 35 511	110	51	40
450/280	15 45 28 511	160	65	40
450/315	15 45 31 511	140	55	40
450/355	15 45 35 511	130	57	40
450/400	15 45 40 511	120	60	40
500/280	15 50 28 511	180	80	40
500/315	15 50 31 511	170	71	40
500/355	15 50 35 511	150	62	40
500/400	15 50 40 511	140	65	40
500/450	15 50 45 511	120	60	40
560/355	15 56 35 511	170	75	40
560/400	15 56 40 511	160	68	40
560/450	15 56 45 511	140	62	40
560/500	15 56 50 511	130	67	40
630/355	15 63 35 511	200	80	40
630/400	15 63 40 511	190	78	40
630/450	15 63 45 511	170	72	40
630/500	15 63 50 511	150	67	40
630/560	15 63 56 511	130	64	40

## PE100 pressure fittings

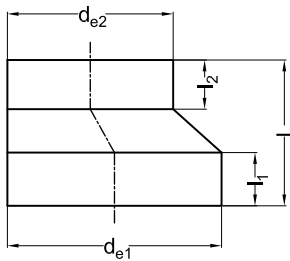
Reducer eccentric short

for butt welding

PE100

SDR 33

water 3,2 bar



$d_{e1}/d_{e2}$	Art. Nr.	L	$I_1$	$I_2$
160/90	31 16 09 533	140	54	40
160/110	31 16 11 533	120	45	40
160/125	31 16 12 533	110	44	40
160/140	31 16 14 533	90	33	40
180/110	31 18 11 533	140	54	40
180/125	31 18 12 533	130	52	40
180/140	31 18 14 533	110	41	40
180/160	31 18 16 533	90	33	40
200/125	31 20 12 533	150	61	40
200/140	31 20 14 533	130	50	40
200/160	31 20 16 533	110	41	40
200/180	31 20 18 533	90	33	40
225/140	31 22 14 533	160	65	40
225/160	31 22 16 533	140	57	40
225/180	31 22 18 533	120	48	40
225/200	31 22 20 533	100	40	40
250/160	31 25 16 533	160	62	40
250/180	31 25 18 533	140	54	40
250/200	31 25 20 533	120	45	40
250/225	31 25 22 533	100	40	40
280/180	31 28 18 533	170	66	40
280/200	31 28 20 533	150	58	40
280/225	31 28 22 533	130	52	40
280/250	31 28 25 533	110	47	40
315/200	31 31 20 533	190	78	40
315/225	31 31 22 533	160	62	40
315/250	31 31 25 533	140	57	40
315/280	31 31 28 533	110	44	40

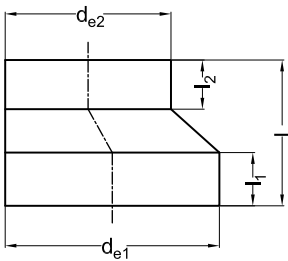
Larger diameters on request.

## PE100 pressure fittings

### Reducer eccentric short

for butt welding

PE100  
SDR 17  
water 10 bar/gas 5 bar



$d_{e1}/d_{e2}$	Art. Nr.	L	$l_1$	$l_2$
160/90	31 16 09 517	140	54	40
160/110	31 16 11 517	120	45	40
160/125	31 16 12 517	110	44	40
160/140	31 16 14 517	90	33	40
180/110	31 18 11 517	140	54	40
180/125	31 18 12 517	130	52	40
180/140	31 18 14 517	110	41	40
180/160	31 18 16 517	90	33	40
200/125	31 20 12 517	150	61	40
200/140	31 20 14 517	130	50	40
200/160	31 20 16 517	110	41	40
200/180	31 20 18 517	100	43	40
225/140	31 22 14 517	160	65	40
225/160	31 22 16 517	140	57	40
225/180	31 22 18 517	120	48	40
225/200	31 22 20 517	100	40	40
250/160	31 25 16 517	160	62	40
250/180	31 25 18 517	140	54	40
250/200	31 25 20 517	130	55	40
250/225	31 25 22 517	100	40	40
280/180	31 28 18 517	170	66	40
280/200	31 28 20 517	150	58	40
280/225	31 28 22 517	130	52	40
280/250	31 28 25 517	110	47	40
315/200	31 31 20 517	190	78	40
315/225	31 31 22 517	160	62	40
315/250	31 31 25 517	140	57	40
315/280	31 31 28 517	120	54	40

Larger diameters on request.

## PE100 pressure fittings

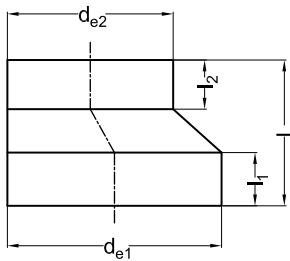
Reducer eccentric short

for butt welding

PE100

SDR 11

water 16 bar/gas 10 bar



$d_{e1}/d_{e2}$	Art. Nr.	L	$I_1$	$I_2$
160/90	31 16 09 511	140	54	40
160/110	31 16 11 511	120	45	40
160/125	31 16 12 511	110	44	40
160/140	31 16 14 511	100	43	40
180/110	31 18 11 511	140	54	40
180/125	31 18 12 511	130	52	40
180/140	31 18 14 511	120	51	40
180/160	31 18 16 511	100	43	40
200/125	31 20 12 511	150	61	40
200/140	31 20 14 511	130	50	40
200/160	31 20 16 511	120	51	40
200/180	31 20 18 511	100	43	40
225/140	31 22 14 511	160	65	40
225/160	31 22 16 511	140	57	40
225/180	31 22 18 511	120	48	40
225/200	31 22 20 511	110	50	40
250/160	31 25 16 511	170	72	40
250/180	31 25 18 511	150	64	40
250/200	31 25 20 511	130	55	40
250/225	31 25 22 511	110	50	40
280/180	31 28 18 511	180	76	40
280/200	31 28 20 511	160	68	40
280/225	31 28 22 511	140	62	40
280/250	31 28 25 511	120	57	40
315/200	31 31 20 511	190	78	40
315/225	31 31 22 511	170	72	40
315/250	31 31 25 511	150	67	40
315/280	31 31 28 511	130	64	40

Larger diameters on request.

## PE100 pressure fittings

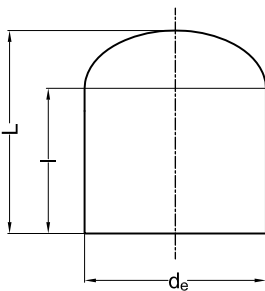
End cap long/short

for butt welding

PE100

SDR 17

water 10 bar/gas 5 bar



d <sub>e</sub>	Art. Nr.		L	I
63	67 06 08 517	*	85	62
75	67 07 08 517	*	95	63
90	67 09 08 517	*	110	79
110	67 11 08 517	*	127	88
125	67 12 08 517	*	124	95
140	67 14 08 517	*	140	110
160	67 16 08 517	*	152	121
180	67 18 08 517	*	169	134
200	67 20 08 517	*	184	140
225	67 22 08 517	*	200	160
250	67 25 08 517	*	230	152
280	67 28 08 517	*	257	162
315	67 31 08 517	*	262	167
355	67 35 08 517	*	270	250
400	67 40 08 517	*	275	250
450	67 45 09 517	**	85	-
500	67 50 09 517	**	90	-
560	67 56 09 517	**	100	-
630	67 63 09 517	**	110	-
710	67 71 09 517	**	110	-
800	67 80 09 517	**	120	-

\* long version

\*\* short version, machined  
fabrication on order, returning not possible

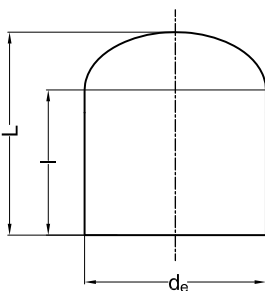
End cap long/short

for butt welding

PE100

SDR 11

water 16 bar/gas 10 bar



d <sub>e</sub>	Art. Nr.		L	I
20	67 01 08 511	*	45	35
25	67 02 08 511	*	52	40
32	67 03 08 511	*	58	44
40	67 04 08 511	*	67	50
50	67 05 08 511	*	75	55
63	67 06 08 511	*	85	62
75	67 07 08 511	*	95	63
90	67 09 08 511	*	110	79
110	67 11 08 511	*	127	88
125	67 12 08 511	*	124	95
140	67 14 08 511	*	140	110
160	67 16 08 511	*	152	121
180	67 18 08 511	*	169	134
200	67 20 08 511	*	184	140
225	67 22 08 511	*	200	160
250	67 25 08 511	*	230	152
280	67 28 08 511	*	257	162
315	67 31 08 511	*	262	167
355	67 35 08 511	*	280	250
400	67 40 08 511	*	285	250

-- to be continued --

## PE100 pressure fittings

End cap long/short - continuation -

d <sub>e</sub>	Art. Nr.	L	I
450	67 45 09 511 **	95	-
500	67 50 09 511 **	105	-
560	67 56 09 511 **	115	-
630	67 63 09 511 **	125	-

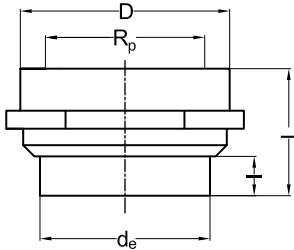
\* long version

\*\* short version, machined  
fabrication on order, returning not possible

## PE100 pressure fittings

**Adaptor short**  
with female thread  
for butt welding

PE80  
SDR 11  
water 8 bar



$d_e/R_p$	Art. Nr.	L	I	D	SW
20/1/2"	92 01 78 110	45	21	32	32
25/1/2"	92 02 78 110	40	17	36	32
25/3/4"	92 02 79 110	50	25	41	41
32/1/2"	92 03 78 110	36	14	36	32
32/3/4"	92 03 79 110	36	12	41	41
32/1"	92 03 80 110	58	30	46	46
40/3/4"	92 04 79 110	45	17	35	41
40/1"	92 04 80 110	45	16	52	46
40/1 1/4"	92 04 81 110	62	30	55	55
50/1/2"	92 05 78 110	47	20	53	32
50/1"	92 05 80 110	47	20	54	46
50/1 1/4"	92 05 81 110	49	21	63	55
50/1 1/2"	92 05 82 110	68	34	70	70
63/2"	92 06 83 110	54	17	85	85

SW = size of the jaw.

Expiring model. Will be replaced by PE100 long version suitable for butt welding and electrofusion.

Fabrication on order.

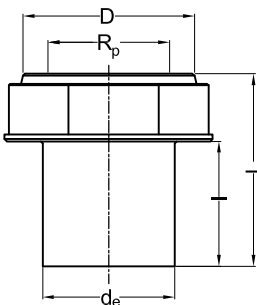
Thread according to EN 10226 (ISO 7).

For sealing we advise PTFE tape.

Depending on assembly method and temperature change the maximum operating pressure can be reduced strongly.

**Adaptor long**  
with female thread  
for butt welding and electrofusion

PE100  
SDR 11  
water 10 bar



$d_e/R_p$	Art. Nr.	L	I	D	SW
20/1/2"	93 01 78 511	65	40	39	32
25/1/2"	93 02 78 511	65	40	39	32
25/3/4"	93 02 79 511	66	40	49	41
32/1/2"	93 03 78 511	69	44	39	32
32/3/4"	93 03 79 511	70	44	49	41
32/1"	93 03 80 511	72	44	55	46
40/3/4"	93 04 79 511	69	45	49	41
40/1"	93 04 80 511	76	49	55	46
40/1 1/4"	93 04 81 511	80	49	66	55
50/1/2"	93 05 78 511	76	55	50	32
50/1"	93 05 80 511	78	50	55	46
50/1 1/4"	93 05 81 511	85	55	66	55
50/1 1/2"	93 05 82 511	86	55	83	70
63/2"	93 06 83 511	100	63	94	85

SW = size of the jaw.

Thread according to EN 10226 (ISO 7).

For sealing we advise PTFE tape.

Depending on assembly method and temperature change the maximum operating pressure can be reduced strongly.

## PE100 pressure fittings

**Adaptor short**  
with male thread  
for butt welding

PE100  
SDR 11  
water 8 bar



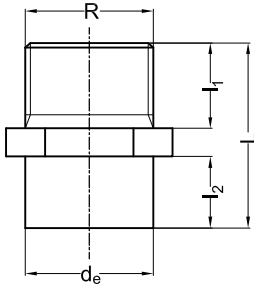
$d_e/R$	Art. Nr.	L	$l_1$	$l_2$	SW
20/1/2"	97 01 78 511	46	19	18	22
25/3/4"	97 02 79 511	51	22	20	27
32/1"	97 03 80 511	61	28	24	36
40/1 1/4"	97 04 81 511	66	29	26	46
50/1 1/2"	97 05 82 511	74	32	28	55
63/2"	97 06 83 511	80	35	31	65

SW = size of the jaw.

Thread according to EN 10226 (ISO 7).

For sealing we advise PTFE tape.

Depending on assembly method and temperature change the maximum operating pressure can be reduced strongly. For specific applications please contact our Technical Support.



**Adaptor long**  
with male thread  
for butt welding and electrofusion

PE100  
SDR 11  
water 10 bar



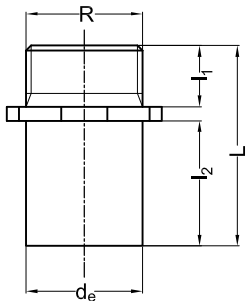
$d_e/R$	Art. Nr.	L	$l_1$	$l_2$	SW
20/1/2"	95 01 78 511	58	19	37	24
25/3/4"	95 02 79 511	61	14	40	27
32/1"	95 03 80 511	62	18	44	35
40/1 1/4"	95 04 81 511	75	19	49	46
50/1 1/2"	95 05 82 511	82	20	55	55
63/2"	95 06 83 511	91	21	63	65

SW = size of the jaw.

Thread according to EN 10226 (ISO 7).

For sealing we advise PTFE tape.

Depending on assembly method and temperature change the maximum operating pressure can be reduced strongly.

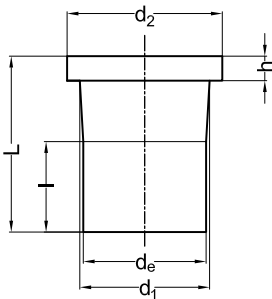


## PE100 pressure fittings

### Stub flange long

for butt welding and electrofusion

PE100  
SDR 17  
water 10 bar/gas 5 bar



d <sub>e</sub>	Art. Nr.	h	l	d <sub>1</sub>	d <sub>2</sub>	L	
63	47 06 04 517	14	66	75	102	120	
75	47 07 04 517	18	78	89	122	130	
90	47 09 04 517	18	84	105	138	145	
110	47 11 04 517	18	100	125	158	155	
125	47 12 04 517	18	108	132	158	170	
140	47 14 04 517	18	109	155	188	175	
160	47 16 04 517	18	110	175	212	195	
180	47 18 04 517	20	115	180	212	195	
200	47 20 04 517	24	127	232	268	205	
225	47 22 04 517	24	137	235	268	215	
250	47 25 04 517	25	146	285	320	205	
280	47 28 04 517	25	156	291	320	245	
315	47 31 04 517	25	160	335	370	225	
355	47 35 04 517	30	175	373	430	260	
400	47 40 04 517	33	195	427	482	285	
450	47 45 04 517	*	46	280	519	585	400
500	47 50 04 517	*	46	280	530	585	400
560	47 56 04 517	*	50	280	615	685	400
630	47 63 04 517	*	50	280	624	685	400
710	47 71 04 517	*	50	280	737	800	400
800	47 80 04 517	*	52	280	840	905	400
900	47 90 04 517	*	55	280	944	1005	400
1000	47 91 04 517	*	60	260	1047	1110	400

\* machined and extended with pipe  
fabrication on order, returning not possible

With grooved jointing face.

## PE100 pressure fittings

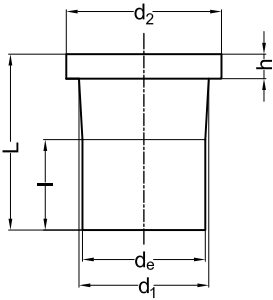
Stub flange long

for butt welding and electrofusion

PE100

SDR 11

water 16 bar/gas 10 bar



d <sub>e</sub>	Art. Nr.	h	l	d <sub>1</sub>	d <sub>2</sub>	L
20	47 01 04 511	7	64	27	45	88
25	47 02 04 511	9	51	33	58	90
32	47 03 04 511	11	57	40	68	95
40	47 04 04 511	12	55	50	78	100
50	47 05 04 511	12	63	61	88	110
63	47 06 04 511	15	66	75	102	120
75	47 07 04 511	17	78	89	122	130
90	47 09 04 511	18	84	105	138	145
110	47 11 04 511	18	115	125	158	155
125	47 12 04 511	25	125	132	158	170
140	47 14 04 511	25	109	155	188	175
160	47 16 04 511	25	140	175	212	195
180	47 18 04 511	31	115	182	212	195
200	47 20 04 511	32	127	232	268	205
225	47 22 04 511	33	137	235	268	215
250	47 25 04 511	35	130	285	320	205
280	47 28 04 511	35	156	291	320	245
315	47 31 04 511	35	155	335	370	225
355	47 35 04 511	40	175	373	430	255
400	47 40 04 511	45	195	427	482	285
450	47 45 04 511	*	280	514	585	400
500	47 50 04 511	*	280	530	585	400
560	47 56 04 511	*	280	615	685	400
630	47 63 04 511	*	280	624	685	400
710	47 71 04 511	*	280	737	800	400

\* machined and extended with pipe  
fabrication on order, returning not possible

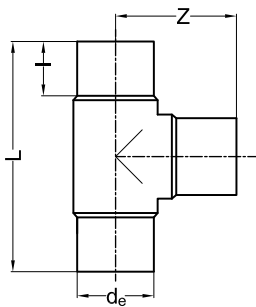
With grooved jointing face.

## PE100 pressure fittings

Tee 90° long

for butt welding and electrofusion

PE100  
SDR 17  
water 10 bar/gas 5 bar

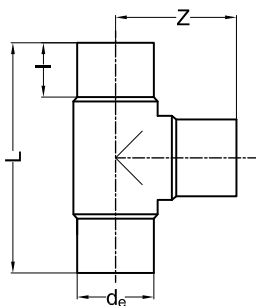


$d_e$	Art. Nr.	L	Z	I
63	39 06 05 517	228	114	70
75	39 07 05 517	240	120	73
90	39 09 05 517	306	153	86
110	39 11 05 517	336	168	95
125	39 12 05 517	354	177	100
140	39 14 05 517	386	193	105
160	39 16 05 517	450	225	124
180	39 18 05 517	466	233	119
200	39 20 05 517	502	251	127
225	39 22 05 517	554	272	138
250	39 25 05 517	628	314	148
280	39 28 05 517	692	346	160
315	39 31 05 517	760	380	170
355	39 35 05 517	820	410	165
400	39 40 05 517	915	460	195
450	39 45 05 517	970	485	195
500	39 50 05 517	1060	530	215

Tee 90° long

for butt welding and electrofusion

PE100  
SDR 11  
water 16 bar/gas 10 bar



$d_e$	Art. Nr.	L	Z	I
20	39 01 05 511	107	54	35
25	39 02 05 511	124	62	41
32	39 03 05 511	150	75	51
40	39 04 05 511	164	82	55
50	39 05 05 511	166	83	51
63	39 06 05 511	228	114	70
75	39 07 05 511	240	120	73
90	39 09 05 511	306	153	86
110	39 11 05 511	336	168	95
125	39 12 05 511	354	177	100
140	39 14 05 511	386	193	105
160	39 16 05 511	450	225	124
180	39 18 05 511	466	233	119
200	39 20 05 511	502	251	127
225	39 22 05 511	554	272	138
250	39 25 05 511	628	314	148
280	39 28 05 511	692	346	160
315	39 31 05 511	760	380	170
355	39 35 05 511	820	410	165
400	39 40 05 511	915	460	195
450	39 45 05 511	970	485	195
500	39 50 05 511	1060	530	215

## PE100 pressure fittings

Tee 45° long

for butt welding and electrofusion

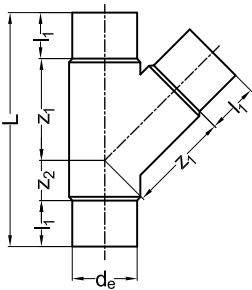
PE100

SDR 17

water 10 bar/gas 5 bar



$d_e$	Art. Nr.	L	$l_1$	$Z_1$	$Z_2$
63	39 06 46 517	245	63	95	23
75	39 07 46 517	290	75	101	37
90	39 09 46 517	370	85	148	51
110	39 11 46 517	400	85	164	66
160	39 16 46 517	540	115	240	65
225	39 22 46 517	705	135	334	93



Tee 45° long

for butt welding and electrofusion

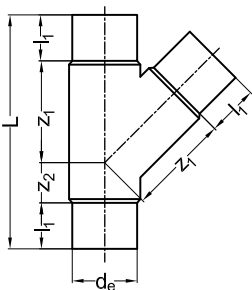
PE100

SDR 11

water 16 bar/gas 10 bar



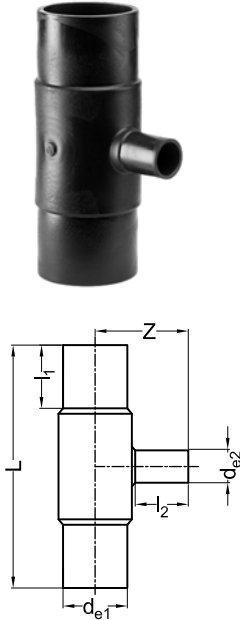
$d_e$	Art. Nr.	L	$l_1$	$Z_1$	$Z_2$
50	39 05 46 511	219	55	87	21
63	39 06 46 511	245	63	95	23
75	39 07 46 511	290	75	101	37
90	39 09 46 511	370	85	148	51
110	39 11 46 511	400	85	164	66
160	39 16 46 511	540	110	240	65
225	39 22 46 511	705	130	334	93



## PE100 pressure fittings

**Tee 90° reduced long**  
with reduced branch  
for butt welding and electrofusion

PE100  
SDR 17  
water 10 bar/gas 5 bar

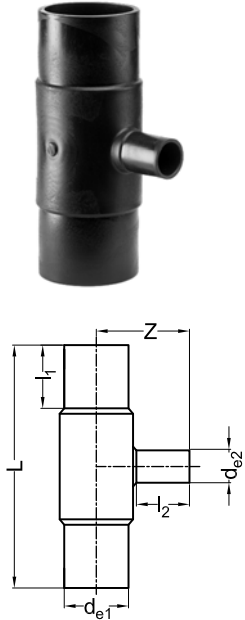


d <sub>e1</sub> /d <sub>e2</sub>	Art. Nr.	L	Z	l <sub>1</sub>	l <sub>2</sub>
63/32	58 06 03 517	228	91	70	46
63/50	58 06 05 517	413	100	63	56
75/32	58 07 03 517	512	108	70	46
75/50	58 07 05 517	253	113	70	55
75/63	58 07 06 517	252	117	70	63
90/50	58 09 05 517	275	117	79	55
90/63	58 09 06 517	264	134	79	63
90/75	58 09 07 517	272	138	74	70
110/63	58 11 06 517	316	135	88	62
110/75	58 11 07 517	305	148	82	70
110/90	58 11 09 517	310	155	91	78
125/90	58 12 09 517	358	164	100	85
125/110	58 12 11 517	340	170	87	82
140/63	58 14 06 517	386	160	105	77
140/75	58 14 07 517	386	173	105	78
140/90	58 14 09 517	388	182	105	87
140/110	58 14 11 517	388	188	105	95
160/63	58 16 06 517	424	174	110	72
160/75	58 16 07 517	424	180	111	73
160/90	58 16 09 517	424	190	111	84
160/110	58 16 11 517	424	197	111	93
180/75	58 18 07 517	460	190	116	93
180/90	58 18 09 517	420	200	116	85
180/110	58 18 11 517	460	210	116	95
180/125	58 18 12 517	430	215	116	100
180/140	58 18 14 517	460	220	116	104
180/160	58 18 16 517	460	225	116	110
200/63	58 20 06 517	550	225	134	80
200/90	58 20 09 517	550	227	134	95
200/110	58 20 11 517	550	240	134	103
200/125	58 20 12 517	550	240	134	110
200/160	58 20 16 517	550	265	134	114
225/63	58 22 06 517	540	241	130	69
225/75	58 22 07 517	440	226	120	80
225/90	58 22 09 517	440	224	120	80
225/110	58 22 11 517	522	271	120	92
225/125	58 22 12 517	522	266	120	93
225/140	58 22 14 517	540	276	130	104
225/160	58 22 16 517	522	252	120	109
225/180	58 22 18 517	552	280	131	131
250/110	58 25 11 517	575	242	130	82
250/160	58 25 16 517	575	261	130	98
315/110	58 31 11 517	546	290	170	100
315/160	58 31 16 517	575	310	170	120
315/225	58 31 22 517	640	335	170	145
315/250	58 31 25 517	638	340	170	150

## PE100 pressure fittings

Tee 90° reduced long  
with reduced branch  
for butt welding and electrofusion

PE100  
SDR 11  
water 16 bar/gas 10 bar

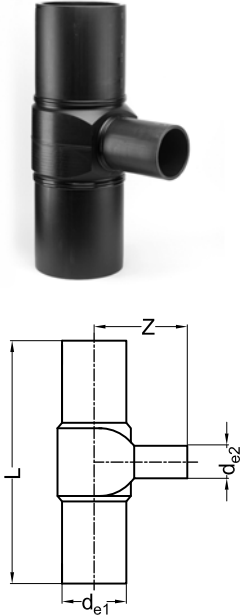


$d_{e1}/d_{e2}$	Art. Nr.	L	Z	$I_1$	$I_2$
63/32	58 06 03 511	228	91	70	46
63/50	58 06 05 511	213	100	63	56
75/32	58 07 03 511	256	103	70	46
75/50	58 07 05 511	253	113	70	55
75/63	58 07 06 511	252	117	70	63
90/50	58 09 05 511	275	117	79	55
90/63	58 09 06 511	264	134	79	63
90/75	58 09 07 511	272	138	74	70
110/63	58 11 06 511	316	135	88	62
110/75	58 11 07 511	305	154	82	70
110/90	58 11 09 511	310	155	91	78
125/90	58 12 09 511	330	168	110	91
125/110	58 12 11 511	340	170	87	82
140/63	58 14 06 511	386	160	105	77
140/75	58 14 07 511	386	173	105	78
140/90	58 14 09 511	388	182	105	87
140/110	58 14 11 511	388	188	105	95
160/63	58 16 06 511	424	174	110	72
160/75	58 16 07 511	424	180	111	73
160/90	58 16 09 511	424	190	111	84
160/110	58 16 11 511	424	197	111	93
180/75	58 18 07 511	460	190	116	93
180/90	58 18 09 511	460	200	116	85
180/110	58 18 11 511	420	200	116	95
180/125	58 18 12 511	430	215	116	100
180/140	58 18 14 511	460	220	116	104
180/160	58 18 16 511	460	225	116	110
200/63	58 20 06 511	550	225	134	80
200/90	58 20 09 511	550	227	134	95
200/110	58 20 11 511	550	240	134	103
200/125	58 20 12 511	550	240	134	110
200/160	58 20 16 511	550	265	134	114
225/63	58 22 06 511	540	241	130	69
225/75	58 22 07 511	540	248	130	76
225/90	58 22 09 511	440	224	120	80
225/110	58 22 11 511	522	271	120	92
225/125	58 22 12 511	522	266	120	93
225/140	58 22 14 511	540	276	130	104
225/160	58 22 16 511	522	252	120	109
225/180	58 22 18 511	552	280	131	131
250/110	58 25 11 511	575	242	130	82
250/160	58 25 16 511	575	261	130	98
315/110	58 31 11 511	546	290	170	100
315/160	58 31 16 511	575	310	170	120
315/225	58 31 22 511	638	335	170	145
315/250	58 31 25 511	670	333	170	150

## PE100 pressure fittings

Tee 90° reduced long - pressure class guaranteed  
with reduced branch  
for butt welding and electrofusion

PE100  
SDR 17  
water 10 bar/gas 5 bar



d <sub>e1</sub> /d <sub>e2</sub>	Art. Nr.	L	Z
280/63	41 28 06 517	770	365
280/75	41 28 07 517	780	365
280/90	41 28 09 517	795	365
280/110	41 28 11 517	815	365
280/125	41 28 12 517	830	365
280/140	41 28 14 517	845	365
280/160	41 28 16 517	865	365
280/180	41 28 18 517	885	365
280/200	41 28 20 517	905	365
280/225	41 28 22 517	930	365
315/75	41 31 07 517	780	380
315/90	41 31 09 517	795	380
315/110	41 31 11 517	815	380
315/125	41 31 12 517	830	380
315/140	41 31 14 517	845	380
315/160	41 31 16 517	865	380
315/180	41 31 18 517	885	380
315/200	41 31 20 517	905	380
315/225	41 31 22 517	930	380
315/250	41 31 25 517	955	380
355/90	41 35 09 517	805	400
355/110	41 35 11 517	825	400
355/125	41 35 12 517	840	400
355/140	41 35 14 517	855	400
355/160	41 35 16 517	875	400
355/180	41 35 18 517	895	400
355/200	41 35 20 517	915	400
355/225	41 35 22 517	940	400
355/250	41 35 25 517	965	400
355/280	41 35 28 517	1000	400
400/110	41 40 11 517	825	425
400/125	41 40 12 517	840	425
400/140	41 40 14 517	855	425
400/160	41 40 16 517	875	425
400/180	41 40 18 517	895	425
400/200	41 40 20 517	915	425
400/225	41 40 22 517	940	425
400/250	41 40 25 517	965	425
400/280	41 40 28 517	1000	425
400/315	41 40 31 517	1035	425
450/125	41 45 12 517	840	450
450/140	41 45 14 517	855	450
450/160	41 45 16 517	875	450
450/180	41 45 18 517	895	450
450/200	41 45 20 517	915	450
450/225	41 45 22 517	940	450
450/250	41 45 25 517	965	450
450/280	41 45 28 517	1000	450
450/315	41 45 31 517	1035	450
450/355	41 45 35 517	1075	450
500/140	41 50 14 517	855	475
500/160	41 50 16 517	875	475
500/180	41 50 18 517	895	475
500/200	41 50 20 517	915	475
500/225	41 50 22 517	940	475
500/250	41 50 25 517	965	475

-- to be continued --

## PE100 pressure fittings

Tee 90° reduced long - pressure class guaranteed - continuation -

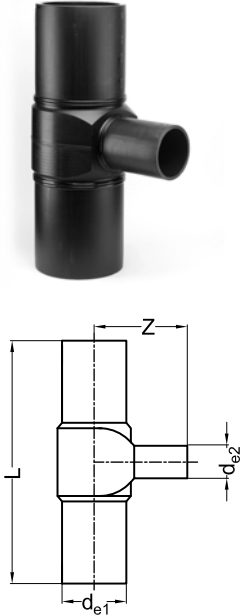
d <sub>e1</sub> /d <sub>e2</sub>	Art. Nr.	L	Z
500/280	41 50 28 517	1000	475
500/315	41 50 31 517	1035	475
500/355	41 50 35 517	1075	475
500/400	41 50 40 517	1120	475
560/160	41 56 16 517	875	500
560/180	41 56 18 517	895	500
560/200	41 56 20 517	915	500
560/225	41 56 22 517	940	500
560/250	41 56 25 517	965	500
560/280	41 56 28 517	1000	500
560/315	41 56 31 517	1035	500
560/355	41 56 35 517	1075	500
560/400	41 56 40 517	1120	500
560/450	41 56 45 517	1170	500
560/560	41 56 56 517	1280	500
630/180	41 63 18 517	895	540
630/200	41 63 20 517	915	540
630/225	41 63 22 517	940	540
630/250	41 63 25 517	965	540
630/280	41 63 28 517	1000	540
630/315	41 63 31 517	1035	540
630/355	41 63 35 517	1075	540
630/400	41 63 40 517	1120	540
630/450	41 63 45 517	1170	540
630/500	41 63 50 517	1220	540
630/630	41 63 63 517	1350	540
710/180	41 71 18 517	895	620
710/200	41 71 20 517	915	620
710/225	41 71 22 517	940	620
710/250	41 71 25 517	965	620
710/280	41 71 28 517	1000	620
710/315	41 71 31 517	1035	620
710/355	41 71 35 517	1075	620
710/400	41 71 40 517	1120	620
710/450	41 71 45 517	1170	620
710/500	41 71 50 517	1220	620
710/560	41 71 56 517	1280	620
710/710	41 71 71 517	1450	650

*Pressure class guaranteed, all branches extended with pipe.  
Fabrication on order, returning not possible.*

## PE100 pressure fittings

Tee 90° reduced long - pressure class guaranteed  
with reduced branch  
for butt welding and electrofusion

PE100  
SDR 11  
water 16 bar/gas 10 bar



d <sub>e1</sub> /d <sub>e2</sub>	Art. Nr.	L	Z
280/63	41 28 06 511	770	365
280/75	41 28 07 511	780	365
280/90	41 28 09 511	795	365
280/110	41 28 11 511	815	365
280/125	41 28 12 511	830	365
280/140	41 28 14 511	845	365
280/160	41 28 16 511	865	365
280/180	41 28 18 511	885	365
280/200	41 28 20 511	905	365
280/225	41 28 22 511	930	365
315/75	41 31 07 511	780	380
315/90	41 31 09 511	795	380
315/110	41 31 11 511	815	380
315/125	41 31 12 511	830	380
315/140	41 31 14 511	845	380
315/160	41 31 16 511	865	380
315/180	41 31 18 511	885	380
315/200	41 31 20 511	905	380
315/225	41 31 22 511	930	380
315/250	41 31 25 511	955	380
355/90	41 35 09 511	805	400
355/110	41 35 11 511	825	400
355/125	41 35 12 511	840	400
355/140	41 35 14 511	855	400
355/160	41 35 16 511	875	400
355/180	41 35 18 511	895	400
355/200	41 35 20 511	915	400
355/225	41 35 22 511	940	400
355/250	41 35 25 511	965	400
355/280	41 35 28 511	1000	400
400/110	41 40 11 511	825	425
400/125	41 40 12 511	840	425
400/140	41 40 14 511	855	425
400/160	41 40 16 511	875	425
400/180	41 40 18 511	895	425
400/200	41 40 20 511	915	425
400/225	41 40 22 511	940	425
400/250	41 40 25 511	965	425
400/280	41 40 28 511	1000	425
400/315	41 40 31 511	1035	425
450/125	41 45 12 511	840	450
450/140	41 45 14 511	855	450
450/160	41 45 16 511	875	450
450/180	41 45 18 511	895	450
450/200	41 45 20 511	915	450
450/225	41 45 22 511	940	450
450/250	41 45 25 511	965	450
450/280	41 45 28 511	1000	450
450/315	41 45 31 511	1035	450
450/355	41 45 35 511	1075	450
500/140	41 50 14 511	855	475
500/160	41 50 16 511	875	475
500/180	41 50 18 511	895	475
500/200	41 50 20 511	915	475
500/225	41 50 22 511	940	475
500/250	41 50 25 511	965	475

-- to be continued --

## PE100 pressure fittings

Tee 90° reduced long - pressure class guaranteed - continuation -

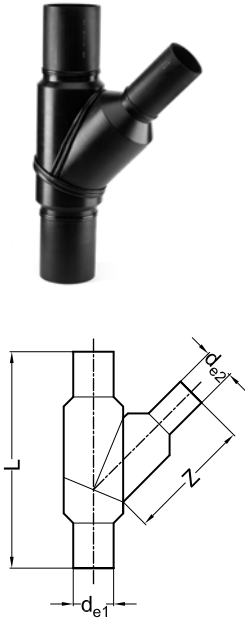
d <sub>e1</sub> /d <sub>e2</sub>	Art. Nr.	L	Z
500/280	41 50 28 511	1000	475
500/315	41 50 31 511	1035	475
500/355	41 50 35 511	1075	475
500/400	41 50 40 511	1120	475
560/160	41 56 16 511	875	500
560/180	41 56 18 511	895	500
560/200	41 56 20 511	915	500
560/225	41 56 22 511	940	500
560/250	41 56 25 511	965	500
560/280	41 56 28 511	1000	500
560/315	41 56 31 511	1035	500
560/355	41 56 35 511	1075	500
560/400	41 56 40 511	1120	500
560/450	41 56 45 511	1170	500
560/560	41 56 56 511	1280	500
630/180	41 63 18 511	895	540
630/200	41 63 20 511	915	540
630/225	41 63 22 511	940	540
630/250	41 63 25 511	965	540
630/280	41 63 28 511	1000	540
630/315	41 63 31 511	1035	540
630/355	41 63 35 511	1075	540
630/400	41 63 40 511	1120	540
630/450	41 63 45 511	1170	540
630/500	41 63 50 511	1220	540
630/630	41 63 63 511	1350	540
710/180	41 71 18 511	895	620
710/200	41 71 20 511	915	620
710/225	41 71 22 511	940	620
710/250	41 71 25 511	965	620
710/280	41 71 28 511	1000	620
710/315	41 71 31 511	1035	620
710/355	41 71 35 511	1075	620
710/400	41 71 40 511	1120	620
710/450	41 71 45 511	1170	620
710/500	41 71 50 511	1220	620
710/560	41 71 56 511	1280	620
710/710	41 71 71 511	1450	650

*Pressure class guaranteed, all branches extended with pipe.  
Fabrication on order, returning not possible.*

## PE100 pressure fittings

Tee 45° reduced long - pressure class guaranteed  
with reduced branch  
for butt welding and electrofusion

PE100  
SDR 17  
water 10 bar/gas 5 bar



d <sub>e1</sub> /d <sub>e2</sub>	Art. Nr.	L	Z
125/63	42 12 06 517	580	350
125/75	42 12 07 517	580	350
125/90	42 12 09 517	580	350
125/110	42 12 11 517	580	350
125/125	42 12 12 517	580	350
140/75	42 14 07 517	600	370
140/90	42 14 09 517	600	370
140/110	42 14 11 517	600	370
140/125	42 14 12 517	600	370
140/140	42 14 14 517	600	370
160/90	42 16 09 517	540	420
160/110	42 16 11 517	540	420
160/125	42 16 12 517	540	420
160/140	42 16 14 517	540	420
180/110	42 18 11 517	660	420
180/125	42 18 12 517	660	420
180/140	42 18 14 517	660	420
180/160	42 18 16 517	660	420
180/180	42 18 18 517	660	420
200/110	42 20 11 517	790	490
200/125	42 20 12 517	790	490
200/140	42 20 14 517	790	490
200/160	42 20 16 517	790	490
200/180	42 20 18 517	790	490
200/200	42 20 20 517	790	490
225/110	42 22 11 517	702	540
225/125	42 22 12 517	702	540
225/140	42 22 14 517	702	540
225/160	42 22 16 517	702	540
225/180	42 22 18 517	702	540
225/200	42 22 20 517	702	540
250/110	42 25 11 517	960	580
250/125	42 25 12 517	960	580
250/140	42 25 14 517	960	580
250/160	42 25 16 517	960	580
250/180	42 25 18 517	960	580
250/200	42 25 20 517	960	580
250/225	42 25 22 517	960	580
250/250	42 25 25 517	960	580
280/160	42 28 16 517	1000	640
280/180	42 28 18 517	1000	640
280/200	42 28 20 517	1000	640
280/225	42 28 22 517	1000	640
280/250	42 28 25 517	1000	640
280/280	42 28 28 517	1000	640
315/160	42 31 16 517	1150	730
315/180	42 31 18 517	1150	730
315/200	42 31 20 517	1150	730
315/225	42 31 22 517	1150	730
315/250	42 31 25 517	1150	730
315/280	42 31 28 517	1150	730
315/315	42 31 31 517	1150	730
355/200	42 35 20 517	1210	780
355/225	42 35 22 517	1210	780
355/250	42 35 25 517	1210	780
355/280	42 35 28 517	1210	780

-- to be continued --

## PE100 pressure fittings

Tee 45° reduced long - pressure class guaranteed - continuation -

<b>d<sub>e1</sub>/d<sub>e2</sub></b>	<b>Art. Nr.</b>	<b>L</b>	<b>Z</b>
355/315	42 35 31 517	1210	780
355/355	42 35 35 517	1210	780
400/200	42 40 20 517	1270	840
400/225	42 40 22 517	1270	840
400/250	42 40 25 517	1270	840
400/280	42 40 28 517	1270	840
400/315	42 40 31 517	1270	840
400/355	42 40 35 517	1270	840
400/400	42 40 40 517	1270	840
450/250	42 45 25 517	1340	900
450/280	42 45 28 517	1340	900
450/315	42 45 31 517	1340	900
450/355	42 45 35 517	1340	900
450/400	42 45 40 517	1340	900
450/450	42 45 45 517	1340	900
500/500	42 50 50 517	1410	960
560/560	42 56 56 517	1500	1030
630/630	42 63 63 517	1600	1110

60° on request.

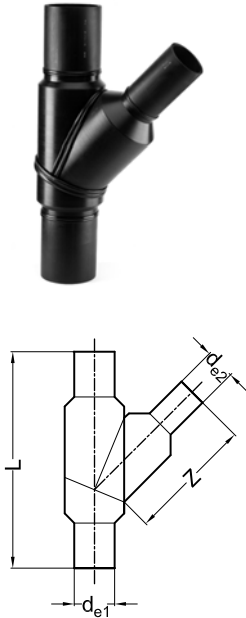
Pressure class guaranteed, all branches extended with pipe.

Fabrication on order, returning not possible.

## PE100 pressure fittings

Tee 45° reduced long - pressure class guaranteed  
with reduced branch  
for butt welding and electrofusion

PE100  
SDR 11  
water 16 bar/gas 10 bar



d <sub>e1</sub> /d <sub>e2</sub>	Art. Nr.	L	Z
125/63	42 12 06 511	580	350
125/75	42 12 07 511	580	350
125/90	42 12 09 511	580	350
125/110	42 12 11 511	580	350
125/125	42 12 12 511	580	350
140/75	42 14 07 511	600	370
140/90	42 14 09 511	600	370
140/110	42 14 11 511	600	370
140/125	42 14 12 511	600	370
140/140	42 14 14 511	600	370
160/90	42 16 09 511	540	420
160/110	42 16 11 511	540	420
160/125	42 16 12 511	540	420
160/140	42 16 14 511	540	420
180/110	42 18 11 511	660	420
180/125	42 18 12 511	660	420
180/140	42 18 14 511	660	420
180/160	42 18 16 511	660	420
180/180	42 18 18 511	660	420
200/110	42 20 11 511	790	490
200/125	42 20 12 511	790	490
200/140	42 20 14 511	790	490
200/160	42 20 16 511	790	490
200/180	42 20 18 511	790	490
200/200	42 20 20 511	790	490
225/110	42 22 11 511	702	540
225/125	42 22 12 511	702	540
225/140	42 22 14 511	702	540
225/160	42 22 16 511	702	540
225/180	42 22 18 511	702	540
225/200	42 22 20 511	702	540
250/110	42 25 11 511	960	580
250/125	42 25 12 511	960	580
250/140	42 25 14 511	960	580
250/160	42 25 16 511	960	580
250/180	42 25 18 511	960	580
250/200	42 25 20 511	960	580
250/225	42 25 22 511	960	580
250/250	42 25 25 511	960	580
280/160	42 28 16 511	1000	640
280/180	42 28 18 511	1000	640
280/200	42 28 20 511	1000	640
280/225	42 28 22 511	1000	640
280/250	42 28 25 511	1000	640
280/280	42 28 28 511	1000	640
315/160	42 31 16 511	1150	730
315/180	42 31 18 511	1150	730
315/200	42 31 20 511	1150	730
315/225	42 31 22 511	1150	730
315/250	42 31 25 511	1150	730
315/280	42 31 28 511	1150	730
315/315	42 31 31 511	1150	730
355/200	42 35 20 511	1210	780
355/225	42 35 22 511	1210	780
355/250	42 35 25 511	1210	780
355/280	42 35 28 511	1210	780

-- to be continued --

## PE100 pressure fittings

Tee 45° reduced long - pressure class guaranteed - continuation -

<b>d<sub>e1</sub>/d<sub>e2</sub></b>	<b>Art. Nr.</b>	<b>L</b>	<b>Z</b>
355/315	42 35 31 511	1210	780
355/355	42 35 35 511	1210	780
400/200	42 40 20 511	1270	840
400/225	42 40 22 511	1270	840
400/250	42 40 25 511	1270	840
400/280	42 40 28 511	1270	840
400/315	42 40 31 511	1270	840
400/355	42 40 35 511	1270	840
400/400	42 40 40 511	1270	840
450/250	42 45 25 511	1340	900
450/280	42 45 28 511	1340	900
450/315	42 45 31 511	1340	900
450/355	42 45 35 511	1340	900
450/400	42 45 40 511	1340	900
450/450	42 45 45 511	1340	900
500/500	42 50 50 511	1410	960
560/560	42 56 56 511	1500	1030
630/630	42 63 63 511	1600	1110

60° on request.

Pressure class guaranteed, all branches extended with pipe.

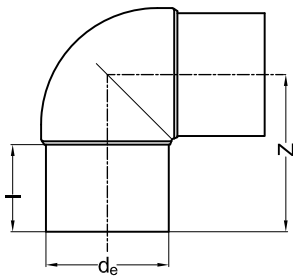
Fabrication on order, returning not possible.

## PE100 pressure fittings

### Elbow 90° long

for butt welding and electrofusion

PE100  
SDR 17  
water 10 bar/gas 5 bar

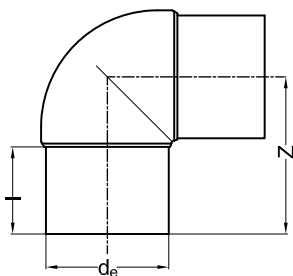


$d_e$	Art. Nr.	Z	I
63	13 06 92 517	95	56
75	13 07 92 517	116	72
90	13 09 92 517	139	78
110	13 11 92 517	158	86
125	13 12 92 517	180	104
140	13 14 92 517	198	119
160	13 16 92 517	210	117
180	13 18 92 517	222	116
200	13 20 92 517	250	128
225	13 22 92 517	269	136
250	13 25 92 517	307	180
280	13 28 92 517	340	200
315	13 31 92 517	370	210

### Elbow 90° long

for butt welding and electrofusion

PE100  
SDR 11  
water 16 bar/gas 10 bar



$d_e$	Art. Nr.	Z	I
20	13 01 92 511	70	60
25	13 02 92 511	63	42
32	13 03 92 511	72	47
40	13 04 92 511	69	44
50	13 05 92 511	77	50
63	13 06 92 511	95	56
75	13 07 92 511	116	72
90	13 09 92 511	139	78
110	13 11 92 511	158	86
125	13 12 92 511	180	104
140	13 14 92 511	198	119
160	13 16 92 511	210	117
180	13 18 92 511	222	116
200	13 20 92 511	250	128
225	13 22 92 511	269	136
250	13 25 92 511	307	180
280	13 28 92 511	340	200
315	13 31 92 511	370	210

## PE100 pressure fittings

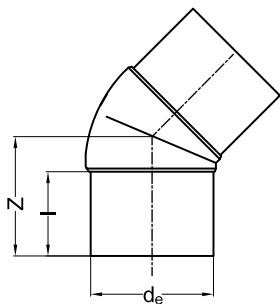
Elbow 45° long

for butt welding and electrofusion

PE100

SDR 17

water 10 bar/gas 5 bar



d <sub>e</sub>	Art. Nr.	Z	I
63	13 06 46 517	82	56
75	13 07 46 517	96	75
90	13 09 46 517	120	84
110	13 11 46 517	129	91
125	13 12 46 517	147	101
140	13 14 46 517	153	104
160	13 16 46 517	169	113
180	13 18 46 517	186	120
200	13 20 46 517	201	127
225	13 22 46 517	218	134
250	13 25 46 517	217	155
280	13 28 46 517	232	162
315	13 31 46 517	251	173

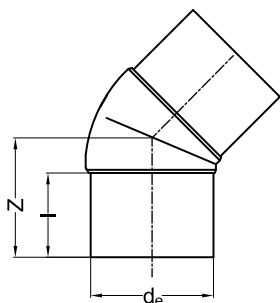
Elbow 45° long

for butt welding and electrofusion

PE100

SDR 11

water 16 bar/gas 10 bar



d <sub>e</sub>	Art. Nr.	Z	I
20	13 01 46 511	44	39
25	13 02 46 511	41	35
32	13 03 46 511	48	47
40	13 04 46 511	58	44
50	13 05 46 511	74	54
63	13 06 46 511	82	56
75	13 07 46 511	96	75
90	13 09 46 511	120	84
110	13 11 46 511	129	91
125	13 12 46 511	147	101
140	13 14 46 511	153	104
160	13 16 46 511	169	113
180	13 18 46 511	186	120
200	13 20 46 511	201	127
225	13 22 46 511	218	134
250	13 25 46 511	217	155
280	13 28 46 511	232	162
315	13 31 46 511	251	173

## PE100 pressure fittings

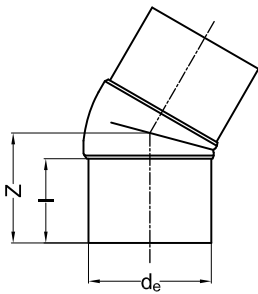
### Elbow 30° long

for butt welding and electrofusion

PE100  
SDR 17  
water 10 bar/gas 5 bar



$d_e$	Art. Nr.	Z	I
75	13 07 33 517	108	77
90	13 09 33 517	116	85
110	13 11 33 517	130	96
125	13 12 33 517	143	102
140	13 14 33 517	148	110
160	13 16 33 517	154	108
180	13 18 33 517	160	116
200	13 20 33 517	170	122
225	13 22 33 517	185	129



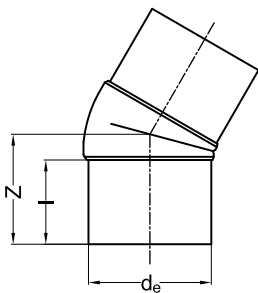
### Elbow 30° long

for butt welding and electrofusion

PE100  
SDR 11  
water 16 bar/gas 10 bar



$d_e$	Art. Nr.	Z	I
75	13 07 33 511	108	77
90	13 09 33 511	116	85
110	13 11 33 511	130	96
125	13 12 33 511	143	102
140	13 14 33 511	148	110
160	13 16 33 511	154	108
180	13 18 33 511	160	116
200	13 20 33 511	170	122
225	13 22 33 511	185	129



## PE100 pressure fittings

Bend 90° R = 1 x d<sub>e</sub> long

for butt welding and electrofusion

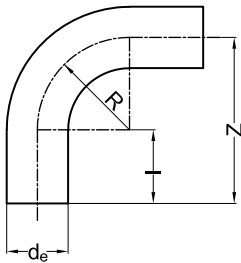
PE100

SDR 17

water 10 bar/gas 5 bar



d <sub>e</sub>	Art. Nr.	l	Z	R
63	12 06 91 517	63	128	63
75	12 07 91 517	70	148	75
90	12 09 91 517	71	164	90
110	12 11 91 517	75	188	110
125	12 12 91 517	85	213	125
140	12 14 91 517	90	234	140
160	12 16 91 517	90	254	160
180	12 18 91 517	100	284	180
200	12 20 91 517	108	312	200
225	12 22 91 517	115	344	225



Bend 90° R = 1 x d<sub>e</sub> long

for butt welding and electrofusion

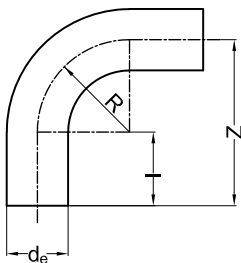
PE100

SDR 11

water 16 bar/gas 10 bar



d <sub>e</sub>	Art. Nr.	l	Z	R
20	12 01 91 511	37	59	20
25	12 02 91 511	39	66	25
32	12 03 91 511	44	78	32
40	12 04 91 511	49	91	40
50	12 05 91 511	55	107	50
63	12 06 91 511	63	128	63
75	12 07 91 511	70	148	75
90	12 09 91 511	71	164	90
110	12 11 91 511	75	188	110
125	12 12 91 511	85	213	125
140	12 14 91 511	90	234	140
160	12 16 91 511	90	254	160
180	12 18 91 511	100	284	180
200	12 20 91 511	108	312	200
225	12 22 91 511	115	344	225

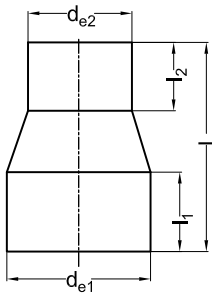


## PE100 pressure fittings

### Reducer concentric long

for butt welding and electrofusion

PE100  
SDR 17  
water 10 bar/gas 5 bar



d <sub>e1</sub> /d <sub>e2</sub>	Art. Nr.	L	l <sub>1</sub>	l <sub>2</sub>
50/25	45 05 02 517	130	55	40
50/32	45 05 03 517	132	55	44
50/40	45 05 04 517	134	55	49
63/32	45 06 03 517	146	63	44
63/40	45 06 04 517	150	63	49
63/50	45 06 05 517	150	63	55
75/63	45 07 06 517	147	66	63
90/50	45 09 05 517	142	64	49
90/63	45 09 06 517	144	69	55
90/75	45 09 07 517	163	74	65
110/63	45 11 06 517	174	85	63
110/75	45 11 07 517	180	85	57
110/90	45 11 09 517	179	79	74
125/63	45 12 06 517	187	87	61
125/75	45 12 07 517	205	105	76
125/90	45 12 09 517	216	99	86
125/110	45 12 11 517	201	89	84
140/75	45 14 07 517	230	112	70
140/90	45 14 09 517	230	112	79
140/110	45 14 11 517	230	112	82
140/125	45 14 12 517	214	99	92
160/90	45 16 09 517	216	101	72
160/110	45 16 11 517	223	104	84
160/125	45 16 12 517	227	95	91
160/140	45 16 14 517	217	110	95
180/90	45 18 09 517	237	105	79
180/110	45 18 11 517	270	120	92
180/125	45 18 12 517	278	116	103
180/140	45 18 14 517	270	120	110
180/160	45 18 16 517	277	115	114
200/125	45 20 12 517	283	123	103
200/140	45 20 14 517	275	120	110
200/160	45 20 16 517	253	105	100
200/180	45 20 18 517	272	120	115
225/110	45 22 11 517	312	130	94
225/140	45 22 14 517	295	130	110
225/160	45 22 16 517	312	130	109
225/180	45 22 18 517	310	130	111
225/200	45 22 20 517	272	124	115
250/160	45 25 16 517	339	138	111
250/180	45 25 18 517	338	137	123
250/200	45 25 20 517	337	137	127
250/225	45 25 22 517	337	146	137
280/180	45 28 18 517	350	146	119
280/200	45 28 20 517	350	146	124
280/225	45 28 22 517	350	146	129
280/250	45 28 25 517	350	146	134
315/200	45 31 20 517	380	180	134
315/225	45 31 22 517	380	157	133
315/250	45 31 25 517	380	157	138
315/280	45 31 28 517	380	157	148
355/250	45 35 25 517	415	172	143
355/280	45 35 28 517	415	172	148

-- to be continued --

## PE100 pressure fittings

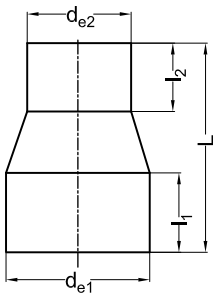
Reducer concentric long - continuation -

$d_{e1}/d_{e2}$	Art. Nr.	L	$l_1$	$l_2$
355/315	45 35 31 517	415	172	158
400/280	45 40 28 517	450	187	153
400/315	45 40 31 517	450	187	158
400/355	45 40 35 517	450	187	168

### Reducer concentric long

for butt welding and electrofusion

PE100  
SDR 11  
water 16 bar/gas 10 bar



$d_{e1}/d_{e2}$	Art. Nr.	L	$l_1$	$l_2$
25/20	45 02 01 511	87	40	41
32/20	45 03 01 511	92	43	39
32/25	45 03 02 511	89	44	37
40/20	45 04 01 511	94	45	36
40/25	45 04 02 511	96	47	35
40/32	45 04 03 511	93	50	39
50/25	45 05 02 511	136	62	48
50/32	45 05 03 511	134	61	50
50/40	45 05 04 511	134	61	56
63/32	45 06 03 511	150	69	50
63/40	45 06 04 511	152	69	55
63/50	45 06 05 511	151	69	60
75/50	45 07 05 511	148	64	58
75/63	45 07 06 511	149	65	59
90/50	45 09 05 511	142	64	49
90/63	45 09 06 511	144	69	55
90/75	45 09 07 511	163	76	61
110/63	45 11 06 511	174	85	63
110/75	45 11 07 511	180	85	57
110/90	45 11 09 511	179	99	93
125/63	45 12 06 511	187	87	61
125/75	45 12 07 511	205	105	76
125/90	45 12 09 511	216	99	86
125/110	45 12 11 511	200	90	82
140/75	45 14 07 511	230	112	70
140/90	45 14 09 511	230	112	79
140/110	45 14 11 511	230	112	82
140/125	45 14 12 511	211	96	90
160/90	45 16 09 511	217	102	74
160/110	45 16 11 511	223	104	84
160/125	45 16 12 511	231	98	92
160/140	45 16 14 511	217	110	95
180/90	45 18 09 511	237	105	79
180/110	45 18 11 511	270	120	92
180/125	45 18 12 511	278	116	103
180/140	45 18 14 511	270	120	110
180/160	45 18 16 511	277	115	114
200/125	45 20 12 511	283	123	103
200/140	45 20 14 511	275	120	110
200/160	45 20 16 511	252	105	100
200/180	45 20 18 511	272	120	115
225/110	45 22 11 511	312	130	94
225/140	45 22 14 511	295	130	110
225/160	45 22 16 511	312	130	109
225/180	45 22 18 511	310	130	111
225/200	45 22 20 511	272	124	115
250/160	45 25 16 511	339	138	111
250/180	45 25 18 511	338	137	123
250/200	45 25 20 511	337	137	127

-- to be continued --

**PE100 pressure fittings**

Reducer concentric long - continuation -

$d_{e1}/d_{e2}$	Art. Nr.	L	$l_1$	$l_2$
250/225	45 25 22 511	337	137	137
280/180	45 28 18 511	350	146	119
280/200	45 28 20 511	350	146	124
280/225	45 28 22 511	350	146	129
280/250	45 28 25 511	350	146	134
315/200	45 31 20 511	380	180	134
315/225	45 31 22 511	380	157	133
315/250	45 31 25 511	380	157	138
315/280	45 31 28 511	380	157	148
355/250	45 35 25 511	415	172	143
355/280	45 35 28 511	415	172	148
355/315	45 35 31 511	415	172	158
400/280	45 40 28 511	450	187	153
400/315	45 40 31 511	450	187	158
400/355	45 40 35 511	450	187	168

## PE100 pressure fittings

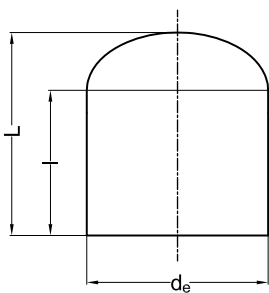
### End cap long

for butt welding and electrofusion

PE100

SDR 17

water 10 bar/gas 5 bar



d <sub>e</sub>	Art. Nr.	L	I
63	67 06 08 517	85	62
75	67 07 08 517	95	63
90	67 09 08 517	110	79
110	67 11 08 517	127	88
125	67 12 08 517	124	95
140	67 14 08 517	140	110
160	67 16 08 517	152	121
180	67 18 08 517	169	134
200	67 20 08 517	184	140
225	67 22 08 517	200	160
250	67 25 08 517	230	152
280	67 28 08 517	257	162
315	67 31 08 517	262	167
355	67 35 08 517	270	250
400	67 40 08 517	275	250
450	67 45 08 517 *	285	250
500	67 50 08 517 *	290	275
560	67 56 08 517 *	300	275
630	67 63 08 517 *	310	300
710	67 71 08 517 *	320	300
800	67 80 08 517 *	330	300

\* machined and extended with pipe fabrication on order, returning not possible

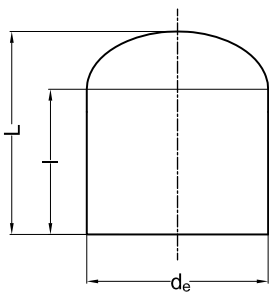
### End cap long

for butt welding and electrofusion

PE100

SDR 11

water 16 bar/gas 10 bar



d <sub>e</sub>	Art. Nr.	L	I
20	67 01 08 511	45	35
25	67 02 08 511	52	40
32	67 03 08 511	58	44
40	67 04 08 511	67	50
50	67 05 08 511	75	55
63	67 06 08 511	85	62
75	67 07 08 511	95	63
90	67 09 08 511	110	79
110	67 11 08 511	127	88
125	67 12 08 511	124	95
140	67 14 08 511	140	110
160	67 16 08 511	152	121
180	67 18 08 511	169	134
200	67 20 08 511	184	140
225	67 22 08 511	200	160
250	67 25 08 511	230	152
280	67 28 08 511	257	162
315	67 31 08 511	262	167
355	67 35 08 511	280	250
400	67 40 08 511	285	250
450	67 45 08 511 *	295	250
500	67 50 08 511 *	305	275

-- to be continued --

**PE100 pressure fittings**

End cap long - continuation -

<b>d<sub>e</sub></b>	<b>Art. Nr.</b>		<b>L</b>	<b>I</b>
<b>560</b>	<b>67 56 08 511</b>	*	315	275
<b>630</b>	<b>67 63 08 511</b>	*	325	300
<b>710</b>	<b>67 71 08 511</b>	*	320	300
<b>800</b>	<b>67 80 08 511</b>	*	330	300

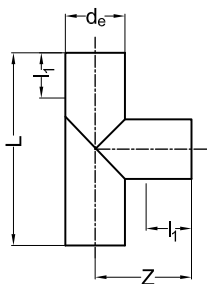
\* *machined and extended with pipe  
fabrication on order, returning not possible*

## PE100 pressure fittings

### Tee 90° welded

for butt welding and electrofusion

PE100  
SDR 33  
water 2 bar



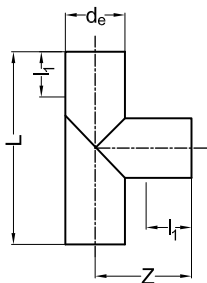
d <sub>e</sub>	Art. Nr.	L	Z	l <sub>1</sub>
225	39 22 02 533	530	265	150
250	39 25 02 533	750	375	250
280	39 28 02 533	780	390	250
315	39 31 02 533	920	460	300
355	39 35 02 533	960	480	300
400	39 40 02 533	1000	500	300
450	39 45 02 533	1050	525	300
500	39 50 02 533	1200	600	350
560	39 56 02 533	1260	630	350
630	39 63 02 533	1330	665	350
710	39 71 02 533	1410	705	350
800	39 80 02 533	1500	750	350
900	39 90 02 533	1700	850	400
1000	39 91 02 533	1800	900	400

Reduced pressure class, see appendix B2 "Maximum operating pressure for pipes and fittings".  
Fabrication on order, returning not possible.

### Tee 90° welded

for butt welding and electrofusion

PE100  
SDR 17  
water 6 bar



d <sub>e</sub>	Art. Nr.	L	Z	l <sub>1</sub>
225	39 22 02 517	530	265	150
250	39 25 02 517	750	375	250
280	39 28 02 517	780	390	250
315	39 31 02 517	920	460	300
355	39 35 02 517	960	480	300
400	39 40 02 517	1000	500	300
450	39 45 02 517	1050	525	300
500	39 50 02 517	1200	600	350
560	39 56 02 517	1260	630	350
630	39 63 02 517	1330	665	350
710	39 71 02 517	1410	705	350
800	39 80 02 517	1500	750	350

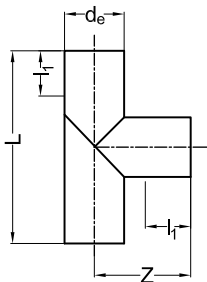
Reduced pressure class, see appendix B2 "Maximum operating pressure for pipes and fittings".  
Fabrication on order, returning not possible.

## PE100 pressure fittings

Tee 90° welded

for butt welding and electrofusion

PE100  
SDR 11  
water 10 bar



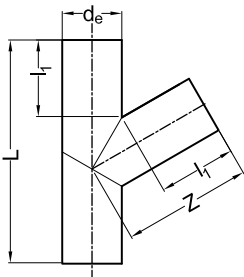
d <sub>e</sub>	Art. Nr.	L	Z	I <sub>1</sub>
225	39 22 02 511	530	265	150
250	39 25 02 511	750	375	250
280	39 28 02 511	780	390	250
315	39 31 02 511	920	460	300
355	39 35 02 511	960	480	300
400	39 40 02 511	1000	500	300
450	39 45 02 511	1050	525	300
500	39 50 02 511	1200	600	350
560	39 56 02 511	1260	630	350
630	39 63 02 511	1330	665	350

Reduced pressure class, see appendix B2 "Maximum operating pressure for pipes and fittings".  
Fabrication on order, returning not possible.

Tee 60° welded

for butt welding and electrofusion

PE100  
SDR 33  
water 1,5 bar



d <sub>e</sub>	Art. Nr.	L	Z	I <sub>1</sub>
225	35 22 02 533	760	445	250
250	35 25 02 533	889	517	300
280	35 28 02 533	923	543	300
315	35 31 02 533	1064	623	350
355	35 35 02 533	1110	658	350
400	35 40 02 533	1162	697	350
450	35 45 02 533	1220	740	350
500	35 50 02 533	1277	783	350
560	35 56 02 533	1347	835	350
630	35 63 02 533	1427	896	350
710	35 71 02 533	1520	965	350
800	35 80 02 533	1724	1093	400
900	35 90 02 533	1839	1180	400
1000	35 91 02 533	1955	1266	400

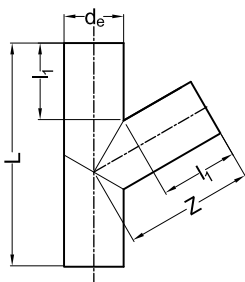
Reduced pressure class, see appendix B2 "Maximum operating pressure for pipes and fittings".  
Fabrication on order, returning not possible.

## PE100 pressure fittings

### Tee 60° welded

for butt welding and electrofusion

PE100  
SDR 17  
water 5 bar



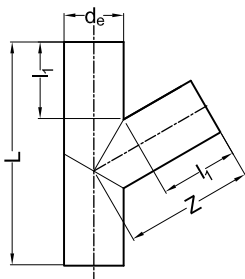
d <sub>e</sub>	Art. Nr.	L	Z	l <sub>1</sub>
225	35 22 02 517	760	445	250
250	35 25 02 517	889	517	300
280	35 28 02 517	923	543	300
315	35 31 02 517	1064	623	350
355	35 35 02 517	1110	658	350
400	35 40 02 517	1162	697	350
450	35 45 02 517	1220	740	350
500	35 50 02 517	1277	783	350
560	35 56 02 517	1347	835	350
630	35 63 02 517	1427	896	350
710	35 71 02 517	1520	965	350
800	35 80 02 517	1724	1093	400

Reduced pressure class, see appendix B2 "Maximum operating pressure for pipes and fittings".  
Fabrication on order, returning not possible.

### Tee 60° welded

for butt welding and electrofusion

PE100  
SDR 11  
water 8 bar



d <sub>e</sub>	Art. Nr.	L	Z	l <sub>1</sub>
225	35 22 02 511	760	445	250
250	35 25 02 511	889	517	300
280	35 28 02 511	923	543	300
315	35 31 02 511	1064	623	350
355	35 35 02 511	1110	658	350
400	35 40 02 511	1162	697	350
450	35 45 02 511	1220	740	350
500	35 50 02 511	1277	783	350
560	35 56 02 511	1347	835	350
630	35 63 02 511	1427	896	350

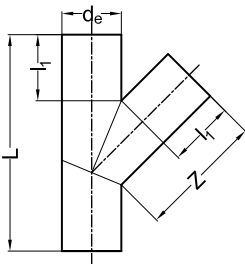
Reduced pressure class, see appendix B2 "Maximum operating pressure for pipes and fittings".  
Fabrication on order, returning not possible.

## PE100 pressure fittings

Tee 45° welded

for butt welding and electrofusion

PE100  
SDR 33  
water 1,5 bar



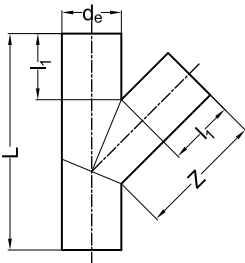
d <sub>e</sub>	Art. Nr.	L	Z	I <sub>1</sub>
225	30 22 02 533	818	522	250
250	30 25 02 533	954	602	300
280	30 28 02 533	996	638	300
315	30 31 02 533	1145	730	350
355	30 35 02 533	1202	779	350
400	30 40 02 533	1266	833	350
450	30 45 02 533	1336	893	350
500	30 50 02 533	1407	954	350
560	30 56 02 533	1492	1026	350
630	30 63 02 533	1591	1110	350
710	30 71 02 533	1704	1207	350
800	30 80 02 533	1831	1316	350
900	30 90 02 533	2073	1486	400
1000	30 91 02 533	2214	1607	400

Reduced pressure class, see appendix B2 "Maximum operating pressure for pipes and fittings".  
Fabrication on order, returning not possible.

Tee 45° welded

for butt welding and electrofusion

PE100  
SDR 17  
water 4 bar



d <sub>e</sub>	Art. Nr.	L	Z	I <sub>1</sub>
225	30 22 02 517	818	522	250
250	30 25 02 517	954	602	300
280	30 28 02 517	996	638	300
315	30 31 02 517	1145	730	350
355	30 35 02 517	1202	779	350
400	30 40 02 517	1266	833	350
450	30 45 02 517	1336	893	350
500	30 50 02 517	1407	954	350
560	30 56 02 517	1492	1026	350
630	30 63 02 517	1591	1110	350
710	30 71 02 517	1704	1207	350
800	30 80 02 517	1831	1316	350

Reduced pressure class, see appendix B2 "Maximum operating pressure for pipes and fittings".  
Fabrication on order, returning not possible.

**PE100 pressure fittings**
**Tee 45° welded**

for butt welding and electrofusion

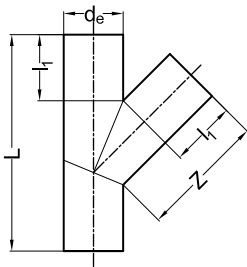
PE100

SDR 11

water 7 bar



$d_e$	Art. Nr.	L	Z	$l_1$
225	30 22 02 511	818	522	250
250	30 25 02 511	954	602	300
280	30 28 02 511	996	638	300
315	30 31 02 511	1145	730	350
355	30 35 02 511	1202	779	350
400	30 40 02 511	1266	833	350
450	30 45 02 511	1336	893	350
500	30 50 02 511	1407	954	350
560	30 56 02 511	1492	1026	350
630	30 63 02 511	1591	1110	350

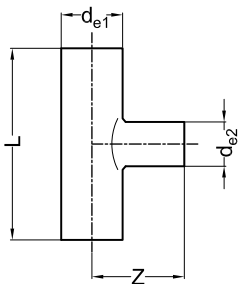


Reduced pressure class, see appendix B2 "Maximum operating pressure for pipes and fittings".  
 Fabrication on order, returning not possible.

## PE100 pressure fittings

Tee 90° reduced welded  
with reduced branch  
for butt welding and electrofusion

PE100  
SDR 17  
water 6 bar



$d_{e1}/d_{e2}$	Art. Nr.	L	Z
110/32	29 11 03 517	332	180
110/40	29 11 04 517	340	180
110/50	29 11 05 517	350	180
110/63	29 11 06 517	363	180
110/75	29 11 07 517	375	180
125/32	29 12 03 517	332	188
125/40	29 12 04 517	340	188
125/50	29 12 05 517	350	188
125/63	29 12 06 517	363	188
125/75	29 12 07 517	375	188
125/90	29 12 09 517	390	188
140/32	29 14 03 517	332	195
140/40	29 14 04 517	340	195
140/50	29 14 05 517	350	195
140/63	29 14 06 517	363	195
140/75	29 14 07 517	375	195
140/90	29 14 09 517	390	195
140/110	29 14 11 517	410	195
160/32	29 16 03 517	332	205
160/40	29 16 04 517	340	205
160/50	29 16 05 517	350	205
160/63	29 16 06 517	363	205
160/75	29 16 07 517	375	205
160/90	29 16 09 517	390	205
160/110	29 16 11 517	410	205
160/125	29 16 12 517	425	205
180/32	29 18 03 517	332	240
180/40	29 18 04 517	340	240
180/50	29 18 05 517	350	240
180/63	29 18 06 517	363	240
180/75	29 18 07 517	375	240
180/90	29 18 09 517	390	240
180/110	29 18 11 517	410	240
180/125	29 18 12 517	425	240
180/140	29 18 14 517	440	240
200/32	29 20 03 517	332	250
200/40	29 20 04 517	340	250
200/50	29 20 05 517	350	250
200/63	29 20 06 517	363	250
200/75	29 20 07 517	375	250
200/90	29 20 09 517	390	250
200/110	29 20 11 517	410	250
200/125	29 20 12 517	425	250
200/140	29 20 14 517	440	250
200/160	29 20 16 517	460	250
225/63	29 22 06 517	363	238
225/75	29 22 07 517	375	238
225/90	29 22 09 517	390	238
225/110	29 22 11 517	410	238
225/125	29 22 12 517	425	238
225/140	29 22 14 517	440	238
225/160	29 22 16 517	460	238
225/180	29 22 18 517	480	263
250/75	29 25 07 517	475	250
250/90	29 25 09 517	490	250
250/110	29 25 11 517	510	250

-- to be continued --

**PE100 pressure fittings**

Tee 90° reduced welded - continuation -

<b>d<sub>e1</sub>/d<sub>e2</sub></b>	<b>Art. Nr.</b>	<b>L</b>	<b>Z</b>
250/125	29 25 12 517	525	250
250/140	29 25 14 517	540	250
250/160	29 25 16 517	560	250
250/180	29 25 18 517	580	275
250/200	29 25 20 517	600	275
280/75	29 28 07 517	475	265
280/90	29 28 09 517	490	265
280/110	29 28 11 517	510	265
280/125	29 28 12 517	525	265
280/140	29 28 14 517	540	265
280/160	29 28 16 517	560	265
280/180	29 28 18 517	580	290
280/200	29 28 20 517	600	290
280/225	29 28 22 517	625	290
315/90	29 31 09 517	490	283
315/110	29 31 11 517	510	283
315/125	29 31 12 517	525	283
315/140	29 31 14 517	540	283
315/160	29 31 16 517	560	283
315/180	29 31 18 517	580	308
315/200	29 31 20 517	600	308
315/225	29 31 22 517	625	308
315/250	29 31 25 517	650	358
355/110	29 35 11 517	510	303
355/125	29 35 12 517	525	303
355/140	29 35 14 517	540	303
355/160	29 35 16 517	560	303
355/180	29 35 18 517	580	328
355/200	29 35 20 517	600	328
355/225	29 35 22 517	625	328
355/250	29 35 25 517	650	378
355/280	29 35 28 517	680	378
400/110	29 40 11 517	510	325
400/125	29 40 12 517	525	325
400/140	29 40 14 517	540	325
400/160	29 40 16 517	560	325
400/180	29 40 18 517	580	350
400/200	29 40 20 517	600	350
400/225	29 40 22 517	625	350
400/250	29 40 25 517	650	400
400/280	29 40 28 517	680	400
400/315	29 40 31 517	715	400
450/110	29 45 11 517	510	350
450/125	29 45 12 517	525	350
450/140	29 45 14 517	540	350
450/160	29 45 16 517	560	350
450/180	29 45 18 517	580	375
450/200	29 45 20 517	600	375
450/225	29 45 22 517	625	375
450/250	29 45 25 517	650	425
450/280	29 45 28 517	680	425
450/315	29 45 31 517	715	425
450/355	29 45 35 517	755	425
500/110	29 50 11 517	510	375
500/125	29 50 12 517	525	375
500/140	29 50 14 517	540	375
500/160	29 50 16 517	560	375
500/180	29 50 18 517	580	400
500/200	29 50 20 517	600	400
500/225	29 50 22 517	625	400

-- to be continued --

## PE100 pressure fittings

Tee 90° reduced welded - continuation -

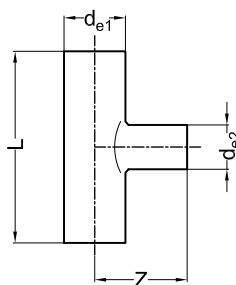
$d_{e1}/d_{e2}$	Art. Nr.	L	Z
500/250	29 50 25 517	650	450
500/280	29 50 28 517	680	450
500/315	29 50 31 517	715	450
500/355	29 50 35 517	755	450
500/400	29 50 40 517	800	450
560/110	29 56 11 517	510	480
560/125	29 56 12 517	525	480
560/140	29 56 14 517	540	480
560/160	29 56 16 517	560	480
560/180	29 56 18 517	580	480
560/200	29 56 20 517	600	480
560/225	29 56 22 517	625	480
560/250	29 56 25 517	650	480
560/280	29 56 28 517	680	480
560/315	29 56 31 517	715	480
560/355	29 56 35 517	755	480
560/400	29 56 40 517	800	480
630/160	29 63 16 517	560	520
630/180	29 63 18 517	580	520
630/200	29 63 20 517	600	520
630/225	29 63 22 517	625	520
630/250	29 63 25 517	650	520
630/280	29 63 28 517	680	520
630/315	29 63 31 517	715	520
630/355	29 63 35 517	755	520
630/400	29 63 40 517	800	520
630/455	29 63 45 517	850	520

*Reduced pressure class, see appendix B2. "Maximum operating pressure for pipes and fittings".  
Fabrication on order, returning not possible.*

## PE100 pressure fittings

**Tee 90° reduced welded**  
with reduced branch  
for butt welding and electrofusion

PE100  
SDR 11  
water 10 bar



d <sub>e1</sub> /d <sub>e2</sub>	Art. Nr.	L	Z
110/32	29 11 03 511	332	180
110/40	29 11 04 511	340	180
110/50	29 11 05 511	350	180
110/63	29 11 06 511	363	180
110/75	29 11 07 511	375	180
125/32	29 12 03 511	332	188
125/40	29 12 04 511	340	188
125/50	29 12 05 511	350	188
125/63	29 12 06 511	363	188
125/75	29 12 07 511	375	188
125/90	29 12 09 511	390	188
140/32	29 14 03 511	332	195
140/40	29 14 04 511	340	195
140/50	29 14 05 511	350	195
140/63	29 14 06 511	363	195
140/75	29 14 07 511	375	195
140/90	29 14 09 511	390	195
140/110	29 14 11 511	410	195
160/32	29 16 03 511	332	205
160/40	29 16 04 511	340	205
160/50	29 16 05 511	350	205
160/63	29 16 06 511	363	205
160/75	29 16 07 511	375	205
160/90	29 16 09 511	390	205
160/110	29 16 11 511	410	205
160/125	29 16 12 511	425	205
180/32	29 18 03 511	332	240
180/40	29 18 04 511	340	240
180/50	29 18 05 511	350	240
180/63	29 18 06 511	363	240
180/75	29 18 07 511	375	240
180/90	29 18 09 511	390	240
180/110	29 18 11 511	410	240
180/125	29 18 12 511	425	240
180/140	29 18 14 511	440	240
200/32	29 20 03 511	332	250
200/40	29 20 04 511	340	250
200/50	29 20 05 511	350	250
200/63	29 20 06 511	363	250
200/75	29 20 07 511	375	250
200/90	29 20 09 511	390	250
200/110	29 20 11 511	410	250
200/125	29 20 12 511	425	250
200/140	29 20 14 511	440	250
200/160	29 20 16 511	460	250
225/63	29 22 06 511	363	238
225/75	29 22 07 511	375	238
225/90	29 22 09 511	390	238
225/110	29 22 11 511	410	238
225/125	29 22 12 511	425	238
225/140	29 22 14 511	440	238
225/160	29 22 16 511	460	238
225/180	29 22 18 511	480	263
250/75	29 25 07 511	475	250
250/90	29 25 09 511	490	250
250/110	29 25 11 511	510	250

-- to be continued --

## PE100 pressure fittings

Tee 90° reduced welded - continuation -

d <sub>e1</sub> /d <sub>e2</sub>	Art. Nr.	L	Z
250/125	29 25 12 511	525	250
250/140	29 25 14 511	540	250
250/160	29 25 16 511	560	250
250/180	29 25 18 511	580	275
250/200	29 25 20 511	600	275
280/75	29 28 07 511	475	265
280/90	29 28 09 511	490	265
280/110	29 28 11 511	510	265
280/125	29 28 12 511	525	265
280/140	29 28 14 511	540	265
280/160	29 28 16 511	560	265
280/180	29 28 18 511	580	290
280/200	29 28 20 511	600	290
280/225	29 28 22 511	625	290
315/90	29 31 09 511	490	283
315/110	29 31 11 511	510	283
315/125	29 31 12 511	525	283
315/140	29 31 14 511	540	283
315/160	29 31 16 511	560	283
315/180	29 31 18 511	580	308
315/200	29 31 20 511	600	308
315/225	29 31 22 511	625	308
315/250	29 31 25 511	650	358
355/110	29 35 11 511	510	303
355/125	29 35 12 511	525	303
355/140	29 35 14 511	540	303
355/160	29 35 16 511	560	303
355/180	29 35 18 511	580	328
355/200	29 35 20 511	600	328
355/225	29 35 22 511	625	328
355/250	29 35 25 511	650	378
355/280	29 35 28 511	680	378
400/110	29 40 11 511	510	325
400/125	29 40 12 511	525	325
400/140	29 40 14 511	540	325
400/160	29 40 16 511	560	325
400/180	29 40 18 511	580	350
400/200	29 40 20 511	600	350
400/225	29 40 22 511	625	350
400/250	29 40 25 511	650	400
400/280	29 40 28 511	680	400
400/315	29 40 31 511	715	400
450/110	29 45 11 511	510	350
450/125	29 45 12 511	525	350
450/140	29 45 14 511	540	350
450/160	29 45 16 511	560	350
450/180	29 45 18 511	580	375
450/200	29 45 20 511	600	375
450/225	29 45 22 511	625	375
450/250	29 45 25 511	650	425
450/280	29 45 28 511	680	425
450/315	29 45 31 511	715	425
450/355	29 45 35 511	755	425
500/110	29 50 11 511	510	375
500/125	29 50 12 511	525	375
500/140	29 50 14 511	540	375
500/160	29 50 16 511	560	375
500/180	29 50 18 511	580	400
500/200	29 50 20 511	600	400
500/225	29 50 22 511	625	400

-- to be continued --

**PE100 pressure fittings**

Tee 90° reduced welded - continuation -

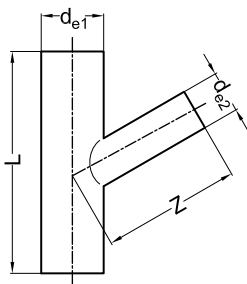
<b>d<sub>e1</sub>/d<sub>e2</sub></b>	<b>Art. Nr.</b>	<b>L</b>	<b>Z</b>
500/250	29 50 25 511	650	450
500/280	29 50 28 511	680	450
500/315	29 50 31 511	715	450
500/355	29 50 35 511	755	450
500/400	29 50 40 511	800	450
560/110	29 56 11 511	510	480
560/125	29 56 12 511	525	480
560/140	29 56 14 511	540	480
560/160	29 56 16 511	560	480
560/180	29 56 18 511	580	480
560/200	29 56 20 511	600	480
560/225	29 56 22 511	625	480
560/250	29 56 25 511	650	480
560/280	29 56 28 511	680	480
560/315	29 56 31 511	715	480
560/355	29 56 35 511	755	480
560/400	29 56 40 511	800	480
630/160	29 63 16 511	560	520
630/180	29 63 18 511	580	520
630/200	29 63 20 511	600	520
630/225	29 63 22 511	625	520
630/250	29 63 25 511	650	520
630/280	29 63 28 511	680	520
630/315	29 63 31 511	715	520
630/355	29 63 35 511	755	520
630/400	29 63 40 511	800	520
630/455	29 63 45 511	850	520

*Reduced pressure class, see appendix B2 "Maximum operating pressure for pipes and fittings".  
Fabrication on order, returning not possible.*

## PE100 pressure fittings

Tee 60° reduced extrusion welded  
with reduced branch  
for butt welding and electrofusion

PE100  
SDR 17  
non pressure, gravity



$d_{e1}/d_{e2}$	Art. Nr.	L	Z
125/110	35 12 11 517	527	304
140/110	35 14 11 517	527	313
160/110	35 16 11 517	527	324
160/125	35 16 12 517	544	329
180/110	35 18 11 517	527	336
180/125	35 18 12 517	544	340
180/140	35 18 14 517	562	344
200/110	35 20 11 517	627	397
200/125	35 20 12 517	644	402
200/140	35 20 14 517	662	406
200/160	35 20 16 517	685	412
225/110	35 22 11 517	627	412
225/125	35 22 12 517	644	416
225/140	35 22 14 517	662	420
225/160	35 22 16 517	685	426
225/180	35 22 18 517	708	432
250/110	35 25 11 517	727	476
250/125	35 25 12 517	744	480
250/140	35 25 14 517	762	485
250/160	35 25 16 517	785	491
250/180	35 25 18 517	808	496
250/200	35 25 20 517	831	502
280/110	35 28 11 517	727	493
280/125	35 28 12 517	744	498
280/140	35 28 14 517	762	502
280/160	35 28 16 517	785	508
280/180	35 28 18 517	808	514
280/200	35 28 20 517	831	519
280/225	35 28 22 517	860	527
315/110	35 31 11 517	827	564
315/125	35 31 12 517	844	568
315/140	35 31 14 517	862	572
315/160	35 31 16 517	885	578
315/180	35 31 18 517	908	584
315/200	35 31 20 517	931	590
315/225	35 31 22 517	960	597
315/250	35 31 25 517	989	604
355/110	35 35 11 517	827	587
355/125	35 35 12 517	844	591
355/140	35 35 14 517	862	595
355/160	35 35 16 517	885	601
355/180	35 35 18 517	908	607
355/200	35 35 20 517	931	613
355/225	35 35 22 517	960	620
355/250	35 35 25 517	989	627
355/280	35 35 28 517	1023	636
400/110	35 40 11 517	827	613
400/125	35 40 12 517	844	617
400/140	35 40 14 517	862	621
400/160	35 40 16 517	885	627
400/180	35 40 18 517	908	633
400/200	35 40 20 517	931	639
400/225	35 40 22 517	960	646
400/250	35 40 25 517	989	653
400/280	35 40 28 517	1023	662
400/315	35 40 31 517	1064	672

-- to be continued --

**PE100 pressure fittings**

Tee 60° reduced extrusion welded - continuation -

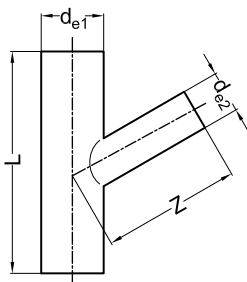
<b>d<sub>e1</sub>/d<sub>e2</sub></b>	<b>Art. Nr.</b>	<b>L</b>	<b>Z</b>
450/110	35 45 11 517	827	642
450/125	35 45 12 517	844	646
450/140	35 45 14 517	862	650
450/160	35 45 16 517	702	656
450/180	35 45 18 517	908	662
450/200	35 45 20 517	931	668
450/225	35 45 22 517	960	675
450/250	35 45 25 517	989	682
450/280	35 45 28 517	1023	691
450/315	35 45 31 517	1064	701

*For non pressure applications.  
Fabrication on order, returning not possible.*

## PE100 pressure fittings

Tee 60° reduced extrusion welded  
with reduced branch  
for butt welding and electrofusion

PE100  
SDR 11  
non pressure, gravity



$d_{e1}/d_{e2}$	Art. Nr.	L	Z
125/110	35 12 11 511	527	304
140/110	35 14 11 511	527	313
160/110	35 16 11 511	527	324
160/125	35 16 12 511	544	329
180/110	35 18 11 511	527	336
180/125	35 18 12 511	544	340
180/140	35 18 14 511	562	344
200/110	35 20 11 511	627	397
200/125	35 20 12 511	644	402
200/140	35 20 14 511	662	406
200/160	35 20 16 511	685	412
225/110	35 22 11 511	627	412
225/125	35 22 12 511	644	416
225/140	35 22 14 511	662	420
225/160	35 22 16 511	685	426
225/180	35 22 18 511	708	432
250/110	35 25 11 511	727	476
250/125	35 25 12 511	744	480
250/140	35 25 14 511	762	485
250/160	35 25 16 511	785	491
250/180	35 25 18 511	808	496
250/200	35 25 20 511	831	502
280/110	35 28 11 511	727	493
280/125	35 28 12 511	744	498
280/140	35 28 14 511	762	502
280/160	35 28 16 511	785	508
280/180	35 28 18 511	808	514
280/200	35 28 20 511	831	519
280/225	35 28 22 511	860	527
315/110	35 31 11 511	827	564
315/125	35 31 12 511	844	568
315/140	35 31 14 511	862	572
315/160	35 31 16 511	885	578
315/180	35 31 18 511	908	584
315/200	35 31 20 511	931	590
315/225	35 31 22 511	960	597
315/250	35 31 25 511	989	604
355/110	35 35 11 511	827	587
355/125	35 35 12 511	844	591
355/140	35 35 14 511	862	595
355/160	35 35 16 511	885	601
355/180	35 35 18 511	908	607
355/200	35 35 20 511	931	613
355/225	35 35 22 511	960	620
355/250	35 35 25 511	989	627
355/280	35 35 28 511	1023	636
400/110	35 40 11 511	827	613
400/125	35 40 12 511	844	617
400/140	35 40 14 511	862	621
400/160	35 40 16 511	885	627
400/180	35 40 18 511	908	633
400/200	35 40 20 511	931	639
400/225	35 40 22 511	960	646
400/250	35 40 25 511	989	653
400/280	35 40 28 511	1023	662
400/315	35 40 31 511	1064	672

-- to be continued --

**PE100 pressure fittings**

Tee 60° reduced extrusion welded - continuation -

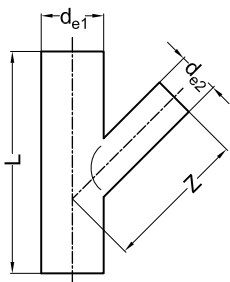
<b>d<sub>e1</sub>/d<sub>e2</sub></b>	<b>Art. Nr.</b>	<b>L</b>	<b>Z</b>
450/110	35 45 11 511	827	642
450/125	35 45 12 511	844	646
450/140	35 45 14 511	862	650
450/160	35 45 16 511	702	656
450/180	35 45 18 511	908	662
450/200	35 45 20 511	931	668
450/225	35 45 22 511	960	675
450/250	35 45 25 511	989	682
450/280	35 45 28 511	1023	691
450/315	35 45 31 511	1064	701

*For non pressure applications.  
Fabrication on order, returning not possible.*

## PE100 pressure fittings

Tee 45° reduced extrusion welded  
with reduced branch  
for butt welding and electrofusion

PE100  
SDR 17  
non pressure, gravity



$d_{e1}/d_{e2}$	Art. Nr.	L	Z
125/110	30 12 11 517	556	343
140/110	30 14 11 517	556	354
160/110	30 16 11 517	556	368
160/125	30 16 12 517	577	376
180/110	30 18 11 517	556	382
180/125	30 18 12 517	577	390
180/140	30 18 14 517	598	397
200/110	30 20 11 517	655	446
200/125	30 20 12 517	677	454
200/140	30 20 14 517	698	461
200/160	30 20 16 517	726	471
225/110	30 22 11 517	656	464
225/125	30 22 12 517	677	472
225/140	30 22 14 517	698	479
225/160	30 22 16 517	726	489
225/180	30 22 18 517	755	499
250/110	30 25 11 517	756	532
250/125	30 25 12 517	777	539
250/140	30 25 14 517	798	547
250/160	30 25 16 517	826	557
250/180	30 25 18 517	855	567
250/200	30 25 20 517	883	577
280/110	30 28 11 517	756	553
280/125	30 28 12 517	777	560
280/140	30 28 14 517	798	568
280/160	30 28 16 517	826	578
280/180	30 28 18 517	855	588
280/200	30 28 20 517	883	598
280/225	30 28 22 517	918	610
315/110	30 31 11 517	856	628
315/125	30 31 12 517	877	635
315/140	30 31 14 517	898	643
315/160	30 31 16 517	926	653
315/180	30 31 18 517	955	663
315/200	30 31 20 517	983	673
315/225	30 31 22 517	1018	685
315/250	30 31 25 517	1054	698
355/110	30 35 11 517	856	656
355/125	30 35 12 517	877	664
355/140	30 35 14 517	898	671
355/160	30 35 16 517	926	681
355/180	30 35 18 517	955	691
355/200	30 35 20 517	983	701
355/225	30 35 22 517	1018	714
355/250	30 35 25 517	1054	726
355/280	30 35 28 517	1096	741
400/110	30 40 11 517	856	688
400/125	30 40 12 517	877	695
400/140	30 40 14 517	898	703
400/160	30 40 16 517	926	713
400/180	30 40 18 517	955	723
400/200	30 40 20 517	983	733
400/225	30 40 22 517	1018	745
400/250	30 40 25 517	1054	758
400/280	30 40 28 517	1096	773
400/315	30 40 31 517	1145	790

-- to be continued --

**PE100 pressure fittings**

Tee 45° reduced extrusion welded - continuation -

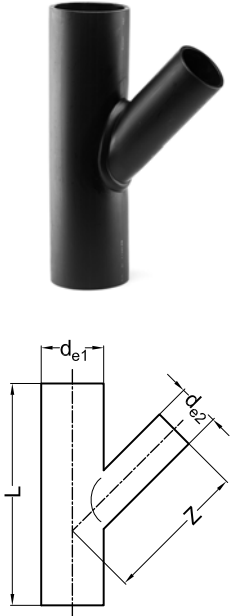
<b>d<sub>e1</sub>/d<sub>e2</sub></b>	<b>Art. Nr.</b>	<b>L</b>	<b>Z</b>
450/110	30 45 11 517	856	723
450/125	30 45 12 517	877	731
450/140	30 45 14 517	898	738
450/160	30 45 16 517	926	748
450/180	30 45 18 517	955	758
450/200	30 45 20 517	983	768
450/225	30 45 22 517	1018	781
450/250	30 45 25 517	1054	793
450/280	30 45 28 517	1096	808
450/315	30 45 31 517	1145	826

*For non pressure applications.  
Fabrication on order, returning not possible.*

## PE100 pressure fittings

Tee 45° reduced extrusion welded  
with reduced branch  
for butt welding and electrofusion

PE100  
SDR 11  
non pressure, gravity



$d_{e1}/d_{e2}$	Art. Nr.	L	Z
125/110	30 12 11 511	556	343
140/110	30 14 11 511	556	354
160/110	30 16 11 511	556	368
160/125	30 16 12 511	577	376
180/110	30 18 11 511	556	382
180/125	30 18 12 511	577	390
180/140	30 18 14 511	598	397
200/110	30 20 11 511	655	446
200/125	30 20 12 511	677	454
200/140	30 20 14 511	698	461
200/160	30 20 16 511	726	471
225/110	30 22 11 511	656	464
225/125	30 22 12 511	677	472
225/140	30 22 14 511	698	479
225/160	30 22 16 511	726	489
225/180	30 22 18 511	755	499
250/110	30 25 11 511	756	532
250/125	30 25 12 511	777	539
250/140	30 25 14 511	798	547
250/160	30 25 16 511	826	557
250/180	30 25 18 511	855	567
250/200	30 25 20 511	883	577
280/110	30 28 11 511	756	553
280/125	30 28 12 511	777	560
280/140	30 28 14 511	798	568
280/160	30 28 16 511	826	578
280/180	30 28 18 511	855	588
280/200	30 28 20 511	883	598
280/225	30 28 22 511	918	610
315/110	30 31 11 511	856	628
315/125	30 31 12 511	877	635
315/140	30 31 14 511	898	643
315/160	30 31 16 511	926	653
315/180	30 31 18 511	955	663
315/200	30 31 20 511	983	673
315/225	30 31 22 511	1018	685
315/250	30 31 25 511	1054	698
355/110	30 35 11 511	856	656
355/125	30 35 12 511	877	664
355/140	30 35 14 511	898	671
355/160	30 35 16 511	926	681
355/180	30 35 18 511	955	691
355/200	30 35 20 511	983	701
355/225	30 35 22 511	1018	714
355/250	30 35 25 511	1054	726
355/280	30 35 28 511	1096	741
400/110	30 40 11 511	856	688
400/125	30 40 12 511	877	695
400/140	30 40 14 511	898	703
400/160	30 40 16 511	926	713
400/180	30 40 18 511	955	723
400/200	30 40 20 511	983	733
400/225	30 40 22 511	1018	745
400/250	30 40 25 511	1054	758
400/280	30 40 28 511	1096	773
400/315	30 40 31 511	1145	790

-- to be continued --

**PE100 pressure fittings**

Tee 45° reduced extrusion welded - continuation -

<b>d<sub>e1</sub>/d<sub>e2</sub></b>	<b>Art. Nr.</b>	<b>L</b>	<b>Z</b>
450/110	30 45 11 511	856	723
450/125	30 45 12 511	877	731
450/140	30 45 14 511	898	738
450/160	30 45 16 511	926	748
450/180	30 45 18 511	955	758
450/200	30 45 20 511	983	768
450/225	30 45 22 511	1018	781
450/250	30 45 25 511	1054	793
450/280	30 45 28 511	1096	808
450/315	30 45 31 511	1145	826

*For non pressure applications.  
Fabrication on order, returning not possible.*

## PE100 pressure fittings

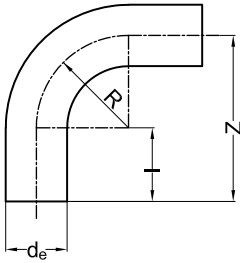
Bend 90° seamless formed  $R = 1,5 \times d_e$

for butt welding and electrofusion

PE100

SDR 17

water 10 bar/gas 5 bar



$d_e$	Art. Nr.	Z	I	R
50	19 05 93 517	175	100	75
63	19 06 93 517	195	100	95
75	19 07 93 517	213	100	113
90	19 09 93 517	235	100	135
110	19 11 93 517	315	150	165
125	19 12 93 517	338	150	188
140	19 14 93 517	360	150	210
160	19 16 93 517	420	180	240
180	19 18 93 517	450	180	270
200	19 20 93 517	500	200	300
225	19 22 93 517	538	200	338
250	19 25 93 517	595	220	375
280	19 28 93 517	640	220	420
315	19 31 93 517	723	250	473
355	19 35 93 517 *	783	250	533
400	19 40 93 517 *	850	250	600
450	19 45 93 517 **	1200	300	900
500	19 50 93 517 **	1300	300	1000
560	19 56 93 517 **	1420	300	1120
630	19 63 93 517 **	1560	300	1260

\* fabrication on order, returning not possible

\*\*  $R = 2,0 \times d_e$   
fabrication on order, returning not possible

Variances of  $\pm 3^\circ$  are possible.

## PE100 pressure fittings

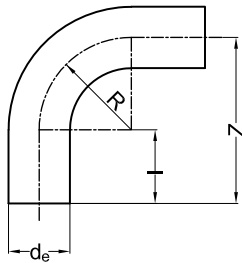
Bend 90° seamless formed  $R = 1,5 \times d_e$

for butt welding and electrofusion

PE100

SDR 11

water 16 bar/gas 10 bar



$d_e$	Art. Nr.	Z	I	R
50	19 05 93 511	175	100	75
63	19 06 93 511	195	100	95
75	19 07 93 511	213	100	113
90	19 09 93 511	235	100	135
110	19 11 93 511	315	150	165
125	19 12 93 511	338	150	188
140	19 14 93 511	360	150	210
160	19 16 93 511	420	180	240
180	19 18 93 511	450	180	270
200	19 20 93 511	500	200	300
225	19 22 93 511	538	200	338
250	19 25 93 511	595	220	375
280	19 28 93 511	640	220	420
315	19 31 93 511	723	250	473
355	19 35 93 511 *	783	250	533
400	19 40 93 511 *	850	250	600
450	19 45 93 511 **	1200	300	900
500	19 50 93 511 **	1300	300	1000
560	19 56 93 511 **	1420	300	1120
630	19 63 93 511 **	1560	300	1260

\* fabrication on order, returning not possible

\*\*  $R = 2,0 \times d_e$   
fabrication on order, returning not possible

Variances of  $\pm 3^\circ$  are possible.

## PE100 pressure fittings

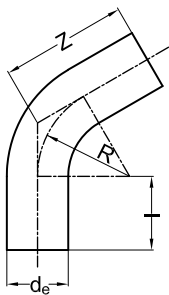
Bend 60° seamless formed  $R = 1,5 \times d_e$

for butt welding and electrofusion

PE100

SDR 17

water 10 bar/gas 5 bar



$d_e$	Art. Nr.	Z	I	R
50	19 05 63 517	175	100	75
63	19 06 63 517	195	100	95
75	19 07 63 517	213	100	113
90	19 09 63 517	235	100	135
110	19 11 63 517	315	150	165
125	19 12 63 517	338	150	188
140	19 14 63 517	360	150	210
160	19 16 63 517	420	180	240
180	19 18 63 517	450	180	270
200	19 20 63 517	500	200	300
225	19 22 63 517	538	200	338
250	19 25 63 517	595	220	375
280	19 28 63 517	640	220	420
315	19 31 63 517	723	250	473
355	19 35 63 517 *	783	250	533
400	19 40 63 517 *	850	250	600
450	19 45 63 517 **	1200	300	900
500	19 50 63 517 **	1300	300	1000
560	19 56 63 517 **	1420	300	1120
630	19 63 63 517 **	1560	300	1260

\* fabrication on order, returning not possible

\*\*  $R = 2,0 \times d_e$   
fabrication on order, returning not possible

Variances of  $\pm 3^\circ$  are possible.

## PE100 pressure fittings

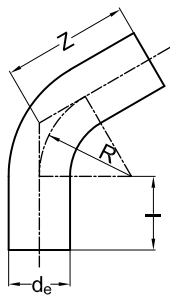
Bend 60° seamless formed  $R = 1,5 \times d_e$

for butt welding and electrofusion

PE100

SDR 11

water 16 bar/gas 10 bar



$d_e$	Art. Nr.	Z	I	R
50	19 05 63 511	175	100	75
63	19 06 63 511	195	100	95
75	19 07 63 511	213	100	113
90	19 09 63 511	235	100	135
110	19 11 63 511	315	150	165
125	19 12 63 511	338	150	188
140	19 14 63 511	360	150	210
160	19 16 63 511	420	180	240
180	19 18 63 511	450	180	270
200	19 20 63 511	500	200	300
225	19 22 63 511	538	200	338
250	19 25 63 511	595	220	375
280	19 28 63 511	640	220	420
315	19 31 63 511	723	250	473
355	19 35 63 511 *	783	250	533
400	19 40 63 511 *	850	250	600
450	19 45 63 511 **	1200	300	900
500	19 50 63 511 **	1300	300	1000
560	19 56 63 511 **	1420	300	1120
630	19 63 63 511 **	1560	300	1260

\* fabrication on order, returning not possible

\*\*  $R = 2,0 \times d_e$   
fabrication on order, returning not possible

Variances of  $\pm 3^\circ$  are possible.

## PE100 pressure fittings

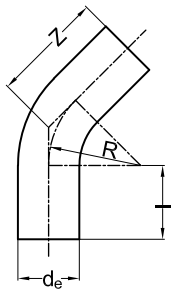
Bend 45° seamless formed  $R = 1,5 \times d_e$

for butt welding and electrofusion

PE100

SDR 17

water 10 bar/gas 5 bar



$d_e$	Art. Nr.	Z	I	R
50	19 05 48 517	132	100	75
63	19 06 48 517	140	100	95
75	19 07 48 517	147	100	113
90	19 09 48 517	157	100	135
110	19 11 48 517	219	150	165
125	19 12 48 517	229	150	188
140	19 14 48 517	238	150	210
160	19 16 48 517	281	180	240
180	19 18 48 517	293	180	270
200	19 20 48 517	326	200	300
225	19 22 48 517	365	200	338
250	19 25 48 517	440	220	375
280	19 28 48 517	460	220	420
315	19 31 48 517	647	250	473
355	19 35 48 517 *	783	250	533
400	19 40 48 517 *	800	250	600
450	19 45 48 517 **	900	300	900
500	19 50 48 517 **	950	300	1000
560	19 56 48 517 **	1000	300	1120
630	19 63 48 517 **	1100	300	1260

\* fabrication on order, returning not possible

\*\*  $R = 2,0 \times d_e$   
fabrication on order, returning not possible

Variances of +/- 3° are possible.

## PE100 pressure fittings

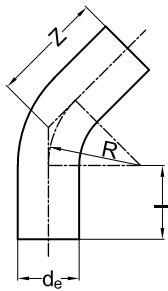
Bend 45° seamless formed  $R = 1,5 \times d_e$

for butt welding and electrofusion

PE100

SDR 11

water 16 bar/gas 10 bar



$d_e$	Art. Nr.	Z	I	R
50	19 05 48 511	132	100	75
63	19 06 48 511	140	100	95
75	19 07 48 511	147	100	113
90	19 09 48 511	157	100	135
110	19 11 48 511	219	150	165
125	19 12 48 511	229	150	188
140	19 14 48 511	238	150	210
160	19 16 48 511	281	180	240
180	19 18 48 511	293	180	270
200	19 20 48 511	326	200	300
225	19 22 48 511	365	200	338
250	19 25 48 511	440	220	375
280	19 28 48 511	460	220	420
315	19 31 48 511	647	250	473
355	19 35 48 511 *	783	250	533
400	19 40 48 511 *	800	250	600
450	19 45 48 511 **	900	300	900
500	19 50 48 511 **	950	300	1000
560	19 56 48 511 **	1000	300	1120
630	19 63 48 511 **	1100	300	1260

\* fabrication on order, returning not possible

\*\*  $R = 2,0 \times d_e$   
fabrication on order, returning not possible

Variances of  $\pm 3^\circ$  are possible.

## PE100 pressure fittings

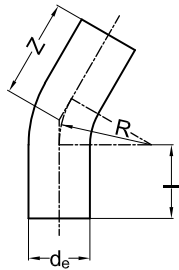
Bend 30° seamless formed  $R = 1,5 \times d_e$

for butt welding and electrofusion

PE100

SDR 17

water 10 bar/gas 5 bar



$d_e$	Art. Nr.	Z	I	R
50	19 05 33 517	120	100	75
63	19 06 33 517	126	100	95
75	19 07 33 517	130	100	113
90	19 09 33 517	136	100	135
110	19 11 33 517	195	150	165
125	19 12 33 517	201	150	188
140	19 14 33 517	207	150	210
160	19 16 33 517	245	180	240
180	19 18 33 517	253	180	270
200	19 20 33 517	281	200	300
225	19 22 33 517	320	200	338
250	19 25 33 517	400	220	375
280	19 28 33 517	430	220	420
315	19 31 33 517	633	250	473
355	19 35 33 517 *	723	350	533
400	19 40 33 517 *	750	350	600
450	19 45 33 517 **	830	400	900
500	19 50 33 517 **	880	400	1000
560	19 56 33 517 **	930	400	1120
630	19 63 33 517 **	980	400	1260

\* fabrication on order, returning not possible

\*\*  $R = 2,0 \times d_e$   
fabrication on order, returning not possible

Variances of +/- 3° are possible.

## PE100 pressure fittings

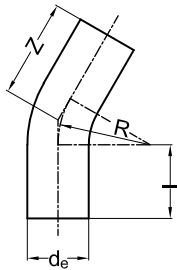
Bend 30° seamless formed  $R = 1,5 \times d_e$

for butt welding and electrofusion

PE100

SDR 11

water 16 bar/gas 10 bar



$d_e$	Art. Nr.	Z	I	R
50	19 05 33 511	120	100	75
63	19 06 33 511	126	100	95
75	19 07 33 511	130	100	113
90	19 09 33 511	136	100	135
110	19 11 33 511	195	150	165
125	19 12 33 511	201	150	188
140	19 14 33 511	207	150	210
160	19 16 33 511	245	180	240
180	19 18 33 511	253	180	270
200	19 20 33 511	281	200	300
225	19 22 33 511	320	200	338
250	19 25 33 511	400	220	375
280	19 28 33 511	430	220	420
315	19 31 33 511	633	250	473
355	19 35 33 511 *	723	350	533
400	19 40 33 511 *	750	350	600
450	19 45 33 511 **	830	400	900
500	19 50 33 511 **	880	400	1000
560	19 56 33 511 **	930	400	1120
630	19 63 33 511 **	980	400	1260

\* fabrication on order, returning not possible

\*\*  $R = 2,0 \times d_e$   
fabrication on order, returning not possible

Variances of  $\pm 3^\circ$  are possible.

## PE100 pressure fittings

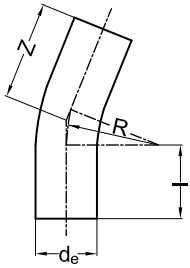
Bend 22° seamless formed  $R = 1,5 \times d_e$

for butt welding and electrofusion

PE100

SDR 17

water 10 bar/gas 5 bar



$d_e$	Art. Nr.	Z	I	R
50	19 05 25 517	120	100	75
63	19 06 25 517	126	100	95
75	19 07 25 517	130	100	113
90	19 09 25 517	136	100	135
110	19 11 25 517	195	150	165
125	19 12 25 517	201	150	188
140	19 14 25 517	207	150	210
160	19 16 25 517	245	180	240
180	19 18 25 517	253	180	270
200	19 20 25 517	281	200	300
225	19 22 25 517	320	200	338
250	19 25 25 517	400	220	375
280	19 28 25 517	430	220	420
315	19 31 25 517	633	250	473
355	19 35 25 517 *	683	350	533
400	19 40 25 517 *	700	350	600
450	19 45 25 517 **	800	400	900
500	19 50 25 517 **	850	400	1000
560	19 56 25 517 **	900	400	1120
630	19 63 25 517 **	950	400	1260

\* fabrication on order, returning not possible

\*\*  $R = 2,0 \times d_e$   
fabrication on order, returning not possible

Variances of +/- 3° are possible.

## PE100 pressure fittings

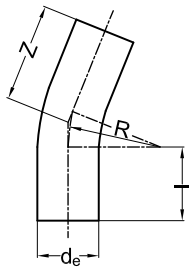
Bend 22° seamless formed  $R = 1,5 \times d_e$

for butt welding and electrofusion

PE100

SDR 11

water 16 bar/gas 10 bar



$d_e$	Art. Nr.	Z	I	R
50	19 05 25 511	120	100	75
63	19 06 25 511	126	100	95
75	19 07 25 511	130	100	113
90	19 09 25 511	136	100	135
110	19 11 25 511	195	150	165
125	19 12 25 511	201	150	188
140	19 14 25 511	207	150	210
160	19 16 25 511	245	180	240
180	19 18 25 511	253	180	270
200	19 20 25 511	281	200	300
225	19 22 25 511	320	200	338
250	19 25 25 511	400	220	375
280	19 28 25 511	430	220	420
315	19 31 25 511	633	250	473
355	19 35 25 511 *	683	350	533
400	19 40 25 511 *	700	350	600
450	19 45 25 511 **	800	400	900
500	19 50 25 511 **	850	400	1000
560	19 56 25 511 **	900	400	1120
630	19 63 25 511 **	950	400	1260

\* fabrication on order, returning not possible

\*\*  $R = 2,0 \times d_e$   
fabrication on order, returning not possible

Variances of  $\pm 3^\circ$  are possible.

## PE100 pressure fittings

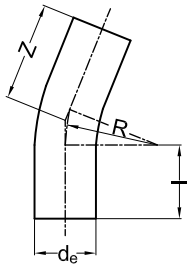
Bend 11° seamless formed  $R = 1,5 \times d_e$

for butt welding and electrofusion

PE100

SDR 17

water 10 bar/gas 5 bar



$d_e$	Art. Nr.	Z	I	R
50	19 05 14 517	120	100	75
63	19 06 14 517	126	100	95
75	19 07 14 517	130	100	113
90	19 09 14 517	136	100	135
110	19 11 14 517	195	150	165
125	19 12 14 517	201	150	188
140	19 14 14 517	207	150	210
160	19 16 14 517	245	180	240
180	19 18 14 517	253	180	270
200	19 20 14 517	281	200	300
225	19 22 14 517	320	200	338
250	19 25 14 517	400	220	375
280	19 28 14 517	430	220	420
315	19 31 14 517	633	250	473
355	19 35 14 517 *	683	350	533
400	19 40 14 517 *	700	350	600
450	19 45 14 517 **	800	400	900
500	19 50 14 517 **	850	400	1000
560	19 56 14 517 **	900	400	1120
630	19 63 14 517 **	950	400	1260

\* fabrication on order, returning not possible

\*\*  $R = 2,0 \times d_e$   
fabrication on order, returning not possible

Variances of +/- 3° are possible.

## PE100 pressure fittings

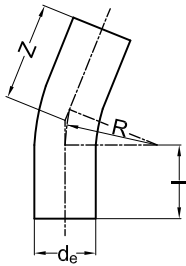
Bend 11° seamless formed  $R = 1,5 \times d_e$

for butt welding and electrofusion

PE100

SDR 11

water 16 bar/gas 10 bar



$d_e$	Art. Nr.	Z	I	R
50	19 05 14 511	120	100	75
63	19 06 14 511	126	100	95
75	19 07 14 511	130	100	113
90	19 09 14 511	136	100	135
110	19 11 14 511	195	150	165
125	19 12 14 511	201	150	188
140	19 14 14 511	207	150	210
160	19 16 14 511	245	180	240
180	19 18 14 511	253	180	270
200	19 20 14 511	281	200	300
225	19 22 14 511	320	200	338
250	19 25 14 511	400	220	375
280	19 28 14 511	430	220	420
315	19 31 14 511	633	250	473
355	19 35 14 511 *	683	350	533
400	19 40 14 511 *	700	350	600
450	19 45 14 511 **	800	400	900
500	19 50 14 511 **	850	400	1000
560	19 56 14 511 **	900	400	1120
630	19 63 14 511 **	950	400	1260

\* fabrication on order, returning not possible

\*\*  $R = 2,0 \times d_e$   
fabrication on order, returning not possible

Variances of  $\pm 3^\circ$  are possible.

## PE100 pressure fittings

Bend 90° seamless formed  $R = 2,5 \times d_e$

for butt welding and electrofusion

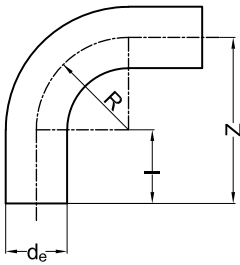
PE100

SDR 17

water 10 bar/gas 5 bar



$d_e$	Art. Nr.	Z	I	R
50	19 05 94 517	225	100	125
63	19 06 94 517	258	100	158
75	19 07 94 517	288	100	188
90	19 09 94 517	325	100	225
110	19 11 94 517	425	150	275
125	19 12 94 517	463	150	313
140	19 14 94 517	500	150	350
160	19 16 94 517	550	150	400
180	19 18 94 517	600	150	450
200	19 20 94 517	650	150	500
225	19 22 94 517	713	150	563



Variances of  $\pm 3^\circ$  are possible.  
Fabrication on order, returning not possible.

Bend 90° seamless formed  $R = 2,5 \times d_e$

for butt welding and electrofusion

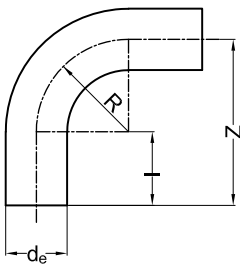
PE100

SDR 11

water 16 bar/gas 10 bar



$d_e$	Art. Nr.	Z	I	R
50	19 05 94 511	225	100	125
63	19 06 94 511	258	100	158
75	19 07 94 511	288	100	188
90	19 09 94 511	325	100	225
110	19 11 94 511	425	150	275
125	19 12 94 511	463	150	313
140	19 14 94 511	500	150	350
160	19 16 94 511	550	150	400
180	19 18 94 511	600	150	450
200	19 20 94 511	650	150	500
225	19 22 94 511	713	150	563

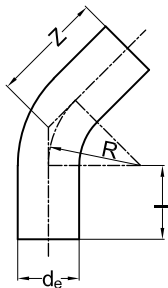


Variances of  $\pm 3^\circ$  are possible.  
Fabrication on order, returning not possible.

## PE100 pressure fittings

**Bend seamless formed  $R = 2,5 \times d_e$**   
 60°/45°/30°/22°/11°  
 for butt welding and electrofusion

PE100  
 SDR 17  
 water 10 bar/gas 5 bar



$d_e$	Art. Nr.	Z	l	R
50	19 05 xx 517	169	120	125
63	19 06 xx 517	182	120	158
75	19 07 xx 517	194	120	188
90	19 09 xx 517	208	120	225
110	19 11 xx 517	278	170	275
125	19 12 xx 517	293	170	313
140	19 14 xx 517	307	170	350
160	19 16 xx 517	337	180	400
180	19 18 xx 517	357	180	450
200	19 20 xx 517	376	180	500
225	19 22 xx 517	404	180	563

Composition Art. Nr.:

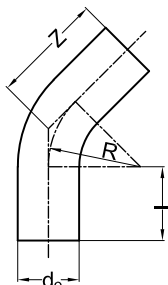
xx = 64 for 60°  
 xx = 49 for 45°  
 xx = 34 for 30°  
 xx = 26 for 22°  
 xx = 15 for 11°

Dimensions apply for bend 45°, 30°, 22° and 11°.

Variances of +/- 3° are possible.  
 Fabrication on order, returning not possible.

**Bend seamless formed  $R = 2,5 \times d_e$**   
 60°/45°/30°/22°/11°  
 for butt welding and electrofusion

PE100  
 SDR 11  
 water 16 bar/gas 10 bar



$d_e$	Art. Nr.	Z	l	R
50	19 05 xx 511	169	120	125
63	19 06 xx 511	182	120	158
75	19 07 xx 511	194	120	188
90	19 09 xx 511	208	120	225
110	19 11 xx 511	278	170	275
125	19 12 xx 511	293	170	313
140	19 14 xx 511	307	170	350
160	19 16 xx 511	337	180	400
180	19 18 xx 511	357	180	450
200	19 20 xx 511	376	180	500
225	19 22 xx 511	404	180	563

Composition Art. Nr.:

xx = 64 for 60°  
 xx = 49 for 45°  
 xx = 34 for 30°  
 xx = 26 for 22°  
 xx = 15 for 11°

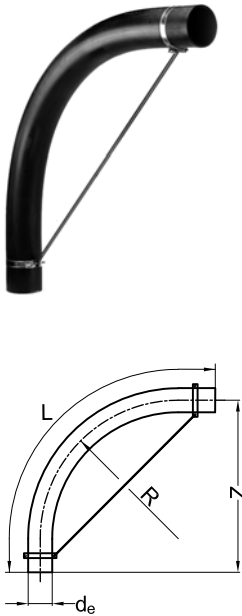
Dimensions apply for bend 45°, 30°, 22° and 11°.

Variances of +/- 3° are possible.  
 Fabrication on order, returning not possible.

## PE100 pressure fittings

**Bend seamless formed Ri = 700 mm**  
90°/60°  
for butt welding and electrofusion

PE100  
SDR 17  
water 10 bar/gas 5 bar



d <sub>e</sub>	Art. Nr.	Z	L	R
50	19 05 xx 517	1715	3000	725
63	19 06 xx 517	1715	3000	731
75	19 07 xx 517	1715	3000	737
90	19 09 xx 517	1715	3000	745
110	19 11 xx 517	1715	3000	755
125	19 12 xx 517	1715	3000	762
140	19 14 xx 517	1715	3000	770
160	19 16 xx 517	1715	3000	780
180	19 18 xx 517	1715	3000	790
200	19 20 xx 517	1715	3000	800
225	19 22 xx 517	1715	3000	812
250	19 25 xx 517	1715	3000	825
280	19 28 xx 517	1715	3000	840

Composition Art. Nr.:  
xx = 95 for 90°  
xx = 65 for 60°

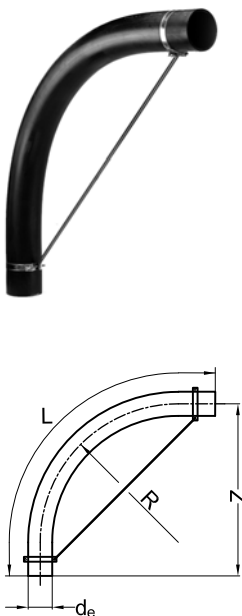
Dimensions apply for bend 90°.

Bends 90°/60° with  $R > 2,5 \times d_e$  are provided with a steel fixation.

Variances of +5°/-3° are possible.  
Fabrication on order, returning not possible.

**Bend seamless formed Ri = 700 mm**  
90°/60°  
for butt welding and electrofusion

PE100  
SDR 11  
water 16 bar/gas 10 bar



d <sub>e</sub>	Art. Nr.	Z	L	R
50	19 05 xx 511	1715	3000	725
63	19 06 xx 511	1715	3000	731
75	19 07 xx 511	1715	3000	737
90	19 09 xx 511	1715	3000	745
110	19 11 xx 511	1715	3000	755
125	19 12 xx 511	1715	3000	762
140	19 14 xx 511	1715	3000	770
160	19 16 xx 511	1715	3000	780
180	19 18 xx 511	1715	3000	790
200	19 20 xx 511	1715	3000	800
225	19 22 xx 511	1715	3000	812
250	19 25 xx 511	1715	3000	825
280	19 28 xx 511	1715	3000	840

Composition Art. Nr.:  
xx = 95 for 90°  
xx = 65 for 60°

Dimensions apply for bend 90°.

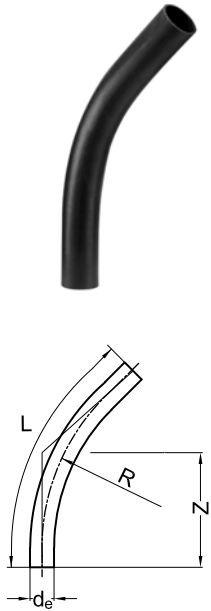
Bends 90°/60° with  $R > 2,5 \times d_e$  are provided with a steel fixation.

Variances of +5°/-3° are possible.  
Fabrication on order, returning not possible.

## PE100 pressure fittings

**Bend seamless formed Ri = 700 mm**  
45°/30°/22°/11°  
for butt welding and electrofusion

PE100  
SDR 17  
water 10 bar/gas 5 bar



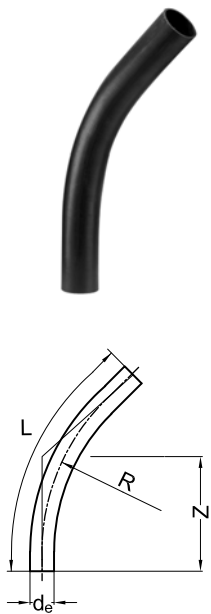
d <sub>e</sub>	Art. Nr.	Z	L	R
50	19 05 xx 517	1500	3000	725
63	19 06 xx 517	1500	3000	731
75	19 07 xx 517	1500	3000	737
90	19 09 xx 517	1500	3000	745
110	19 11 xx 517	1500	3000	755
125	19 12 xx 517	1500	3000	762
140	19 14 xx 517	1500	3000	770
160	19 16 xx 517	1500	3000	780
180	19 18 xx 517	1500	3000	790
200	19 20 xx 517	1500	3000	800
225	19 22 xx 517	1500	3000	812
250	19 25 xx 517	1500	3000	825
280	19 28 xx 517	1500	3000	840

Composition Art. Nr.:  
xx = 50 for 45°  
xx = 35 for 30°  
xx = 27 for 22°  
xx = 16 for 11°

Variations of +5°/-3° are possible.  
Fabrication on order, returning not possible.

**Bend seamless formed Ri = 700 mm**  
45°/30°/22°/11°  
for butt welding and electrofusion

PE100  
SDR 11  
water 16 bar/gas 10 bar



d <sub>e</sub>	Art. Nr.	Z	L	R
50	19 05 xx 511	1500	3000	725
63	19 06 xx 511	1500	3000	731
75	19 07 xx 511	1500	3000	737
90	19 09 xx 511	1500	3000	745
110	19 11 xx 511	1500	3000	755
125	19 12 xx 511	1500	3000	762
140	19 14 xx 511	1500	3000	770
160	19 16 xx 511	1500	3000	780
180	19 18 xx 511	1500	3000	790
200	19 20 xx 511	1500	3000	800
225	19 22 xx 511	1500	3000	812
250	19 25 xx 511	1500	3000	825
280	19 28 xx 511	1500	3000	840

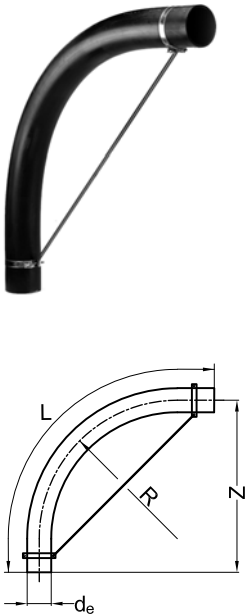
Composition Art. Nr.:  
xx = 50 for 45°  
xx = 35 for 30°  
xx = 27 for 22°  
xx = 16 for 11°

Variations of +5°/-3° are possible.  
Fabrication on order, returning not possible.

## PE100 pressure fittings

Bend seamless formed  $R_i = 1000$  mm  
 $90^\circ/60^\circ$   
 for butt welding and electrofusion

PE100  
 SDR 17  
 water 10 bar/gas 5 bar



$d_e$	Art. Nr.	Z	L	R
50	19 05 xx 517	1972	3300	1025
63	19 06 xx 517	1972	3300	1031
75	19 07 xx 517	1972	3300	1037
90	19 09 xx 517	1972	3300	1045
110	19 11 xx 517	1972	3300	1055
125	19 12 xx 517	1972	3300	1062
140	19 14 xx 517	1972	3300	1070
160	19 16 xx 517	1972	3300	1080
180	19 18 xx 517	1972	3300	1090
200	19 20 xx 517	1972	3300	1100
225	19 22 xx 517	1972	3300	1112
250	19 25 xx 517	1972	3300	1125
280	19 28 xx 517	1972	3300	1140
315	19 31 xx 517	1972	3300	1157
355	19 35 xx 517	1972	3300	1177
400	19 40 xx 517	1972	3300	1200

Composition Art. Nr.:  
 xx = 96 for  $90^\circ$   
 xx = 66 for  $60^\circ$

Dimensions apply for bend  $90^\circ$ .

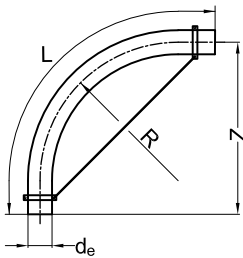
Bends  $90^\circ/60^\circ$  with  $R > 2,5 \times d_e$  are provided with a steel fixation.

Variances of  $+5\%/-3\%$  are possible.  
 Fabrication on order, returning not possible.

## PE100 pressure fittings

**Bend seamless formed Ri = 1000 mm**  
 90°/60°  
 for butt welding and electrofusion

PE100  
 SDR 11  
 water 16 bar/gas 10 bar



$d_e$	Art. Nr.	Z	L	R
50	19 05 xx 511	1972	3300	1025
63	19 06 xx 511	1972	3300	1031
75	19 07 xx 511	1972	3300	1037
90	19 09 xx 511	1972	3300	1045
110	19 11 xx 511	1972	3300	1055
125	19 12 xx 511	1972	3300	1062
140	19 14 xx 511	1972	3300	1070
160	19 16 xx 511	1972	3300	1080
180	19 18 xx 511	1972	3300	1090
200	19 20 xx 511	1972	3300	1100
225	19 22 xx 511	1972	3300	1112
250	19 25 xx 511	1972	3300	1125
280	19 28 xx 511	1972	3300	1140
315	19 31 xx 511	1972	3300	1157
355	19 35 xx 511	1972	3300	1177
400	19 40 xx 511	1972	3300	1200

Composition Art. Nr.:  
 xx = 96 for 90°  
 xx = 66 for 60°

Dimensions apply for bend 90°.

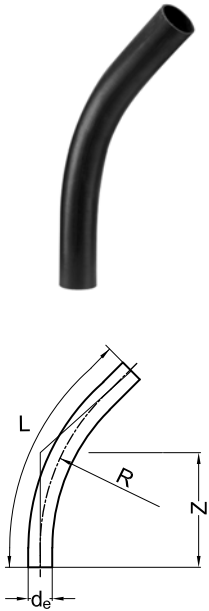
Bends 90°/60° with  $R > 2,5 \times d_e$  are provided with a steel fixation.

Variances of +5°/-3° are possible.  
 Fabrication on order, returning not possible.

## PE100 pressure fittings

**Bend seamless formed Ri = 1000 mm**  
45°/30°/22°/11°  
for butt welding and electrofusion

PE100  
SDR 17  
water 10 bar/gas 5 bar



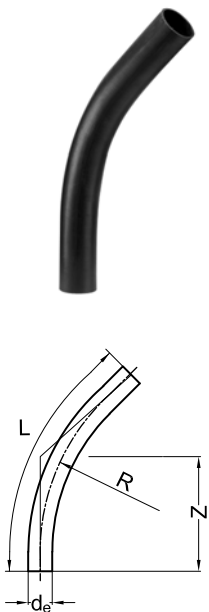
d <sub>e</sub>	Art. Nr.	Z	L	R
50	19 05 xx 517	1650	3300	1025
63	19 06 xx 517	1650	3300	1031
75	19 07 xx 517	1650	3300	1037
90	19 09 xx 517	1650	3300	1045
110	19 11 xx 517	1650	3300	1055
125	19 12 xx 517	1650	3300	1062
140	19 14 xx 517	1650	3300	1070
160	19 16 xx 517	1650	3300	1080
180	19 18 xx 517	1650	3300	1090
200	19 20 xx 517	1650	3300	1100
225	19 22 xx 517	1650	3300	1112
250	19 25 xx 517	1650	3300	1125
280	19 28 xx 517	1650	3300	1140
315	19 31 xx 517	1650	3300	1157
355	19 35 xx 517	1650	3300	1177
400	19 40 xx 517	1650	3300	1200

Composition Art. Nr.:  
xx = 51 for 45°  
xx = 36 for 30°  
xx = 28 for 22°  
xx = 17 for 11°

Variances of +5°/-3° are possible.  
Fabrication on order, returning not possible.

**Bend seamless formed Ri = 1000 mm**  
45°/30°/22°/11°  
for butt welding and electrofusion

PE100  
SDR 11  
water 16 bar/gas 10 bar



d <sub>e</sub>	Art. Nr.	Z	L	R
50	19 05 xx 511	1650	3300	1025
63	19 06 xx 511	1650	3300	1031
75	19 07 xx 511	1650	3300	1037
90	19 09 xx 511	1650	3300	1045
110	19 11 xx 511	1650	3300	1055
125	19 12 xx 511	1650	3300	1062
140	19 14 xx 511	1650	3300	1070
160	19 16 xx 511	1650	3300	1080
180	19 18 xx 511	1650	3300	1090
200	19 20 xx 511	1650	3300	1100
225	19 22 xx 511	1650	3300	1112
250	19 25 xx 511	1650	3300	1125
280	19 28 xx 511	1650	3300	1140
315	19 31 xx 511	1650	3300	1157
355	19 35 xx 511	1650	3300	1177
400	19 40 xx 511	1650	3300	1200

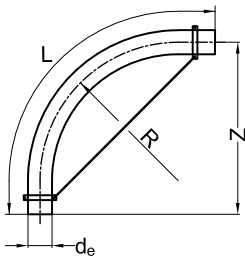
Composition Art. Nr.:  
xx = 51 for 45°  
xx = 36 for 30°  
xx = 28 for 22°  
xx = 17 for 11°

Variances of +5°/-3° are possible.  
Fabrication on order, returning not possible.

**PE100 pressure fittings**

**Bend seamless formed Ri = 1750 mm**  
 90°/60°  
 for butt welding and electrofusion

PE100  
 SDR 17  
 water 10 bar/gas 5 bar



$d_e$	Art. Nr.	Z	L	R
50	19 05 xx 517	3030	5000	1775
63	19 06 xx 517	3030	5000	1781
75	19 07 xx 517	3030	5000	1787
90	19 09 xx 517	3030	5000	1795
110	19 11 xx 517	3030	5000	1805
125	19 12 xx 517	3030	5000	1812
140	19 14 xx 517	3030	5000	1820
160	19 16 xx 517	3030	5000	1830
180	19 18 xx 517	3030	5000	1840
200	19 20 xx 517	3030	5000	1850
225	19 22 xx 517	3030	5000	1862
250	19 25 xx 517	3030	5000	1875
280	19 28 xx 517	3030	5000	1890
315	19 31 xx 517	3030	5000	1907
355	19 35 xx 517	3030	5000	1927
400	19 40 xx 517	3030	5000	1950
450	19 45 xx 517	3030	5000	1975
500	19 50 xx 517	3030	5000	2000
560	19 56 xx 517	3030	5000	2030
630	19 63 xx 517	3030	5000	2065

Composition Art. Nr.:

xx = 97 for 90°

xx = 67 for 60°

Dimensions apply for bend 90°.

Bends 90°/60° with  $R > 2,5 \times d_e$  are provided with a steel fixation.

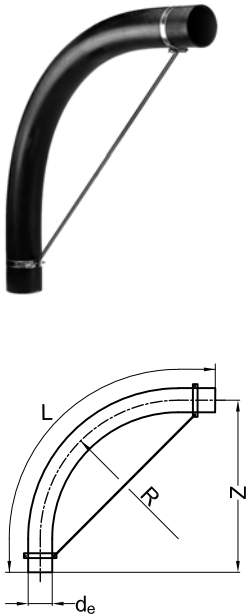
Variances of +5%/-3% are possible.

Fabrication on order, returning not possible.

## PE100 pressure fittings

Bend seamless formed  $R_i = 1750$  mm  
 $90^\circ/60^\circ$   
 for butt welding and electrofusion

PE100  
 SDR 11  
 water 16 bar/gas 10 bar



$d_e$	Art. Nr.	Z	L	R
50	19 05 xx 511	3030	5000	1775
63	19 06 xx 511	3030	5000	1781
75	19 07 xx 511	3030	5000	1787
90	19 09 xx 511	3030	5000	1795
110	19 11 xx 511	3030	5000	1805
125	19 12 xx 511	3030	5000	1812
140	19 14 xx 511	3030	5000	1820
160	19 16 xx 511	3030	5000	1830
180	19 18 xx 511	3030	5000	1840
200	19 20 xx 511	3030	5000	1850
225	19 22 xx 511	3030	5000	1862
250	19 25 xx 511	3030	5000	1875
280	19 28 xx 511	3030	5000	1890
315	19 31 xx 511	3030	5000	1907
355	19 35 xx 511	3030	5000	1927
400	19 40 xx 511	3030	5000	1950
450	19 45 xx 511	3030	5000	1975
500	19 50 xx 511	3030	5000	2000
560	19 56 xx 511	3030	5000	2030
630	19 63 xx 511	3030	5000	2065

Composition Art. Nr.:

xx = 97 for  $90^\circ$

xx = 67 for  $60^\circ$

Dimensions apply for bend  $90^\circ$ .

Bends  $90^\circ/60^\circ$  with  $R > 2,5 \times d_e$  are provided with a steel fixation.

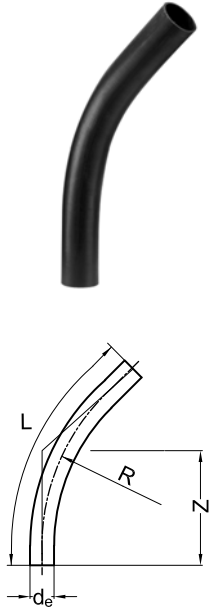
Variances of  $+5^\circ/-3^\circ$  are possible.

Fabrication on order, returning not possible.

**PE100 pressure fittings**

**Bend seamless formed Ri = 1750 mm**  
 45°/30°/22°/11°  
 for butt welding and electrofusion

PE100  
 SDR 17  
 water 10 bar/gas 5 bar



d <sub>e</sub>	Art. Nr.	Z	L	R
50	19 05 xx 517	2550	5000	1775
63	19 06 xx 517	2550	5000	1781
75	19 07 xx 517	2550	5000	1787
90	19 09 xx 517	2550	5000	1795
110	19 11 xx 517	2550	5000	1805
125	19 12 xx 517	2550	5000	1812
140	19 14 xx 517	2550	5000	1820
160	19 16 xx 517	2550	5000	1830
180	19 18 xx 517	2550	5000	1840
200	19 20 xx 517	2550	5000	1850
225	19 22 xx 517	2550	5000	1862
250	19 25 xx 517	2550	5000	1875
280	19 28 xx 517	2550	5000	1890
315	19 31 xx 517	2550	5000	1907
355	19 35 xx 517	2550	5000	1927
400	19 40 xx 517	2550	5000	1950
450	19 45 xx 517	2550	5000	1975
500	19 50 xx 517	2550	5000	2000
560	19 56 xx 517	2550	5000	2030
630	19 63 xx 517	2550	5000	2065

Composition Art. Nr.:

xx = 52 for 45°

xx = 37 for 30°

xx = 29 for 22°

xx = 18 for 11°

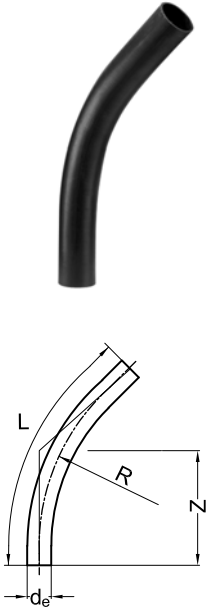
Variances of +5%/-3° are possible.

Fabrication on order, returning not possible.

## PE100 pressure fittings

Bend seamless formed Ri = 1750 mm  
 45°/30°/22°/11°  
 for butt welding and electrofusion

PE100  
 SDR 11  
 water 16 bar/gas 10 bar



d <sub>e</sub>	Art. Nr.	Z	L	R
50	19 05 xx 511	2550	5000	1775
63	19 06 xx 511	2550	5000	1781
75	19 07 xx 511	2550	5000	1787
90	19 09 xx 511	2550	5000	1795
110	19 11 xx 511	2550	5000	1805
125	19 12 xx 511	2550	5000	1812
140	19 14 xx 511	2550	5000	1820
160	19 16 xx 511	2550	5000	1830
180	19 18 xx 511	2550	5000	1840
200	19 20 xx 511	2550	5000	1850
225	19 22 xx 511	2550	5000	1862
250	19 25 xx 511	2550	5000	1875
280	19 28 xx 511	2550	5000	1890
315	19 31 xx 511	2550	5000	1907
355	19 35 xx 511	2550	5000	1927
400	19 40 xx 511	2550	5000	1950
450	19 45 xx 511	2550	5000	1975
500	19 50 xx 511	2550	5000	2000
560	19 56 xx 511	2550	5000	2030
630	19 63 xx 511	2550	5000	2065

Composition Art. Nr.:

xx = 52 for 45°  
 xx = 37 for 30°  
 xx = 29 for 22°  
 xx = 18 for 11°

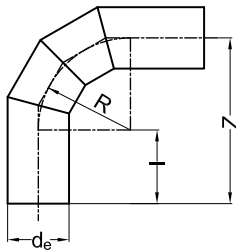
Variances of +5°/-3° are possible.  
 Fabrication on order, returning not possible.

## PE100 pressure fittings

**Bend 90° welded  $R = 1,5 \times d_e$**

for butt welding and electrofusion

PE100  
SDR 33  
water 2,5 bar



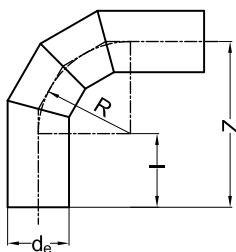
$d_e$	Art. Nr.	Z	I	R
110	18 11 93 533	315	150	165
125	18 12 93 533	338	150	188
140	18 14 93 533	360	150	210
160	18 16 93 533	390	150	240
180	18 18 93 533	420	150	270
200	18 20 93 533	450	150	300
225	18 22 93 533	488	150	338
250	18 25 93 533	625	250	375
280	18 28 93 533	670	250	420
315	18 31 93 533	778	300	478
355	18 35 93 533	833	300	533
400	18 40 93 533	900	300	600
450	18 45 93 533	975	300	675
500	18 50 93 533	1100	350	750
560	18 56 93 533	1190	350	840
630	18 63 93 533	1295	350	945
710	18 71 93 533	1415	350	1065
800	18 80 93 533	1550	350	1200
900	18 90 93 533	1750	400	1350
1000	18 91 93 533	1900	400	1500

Reduced pressure class, see appendix B2 "Maximum operating pressure for pipes and fittings".  
30°, 45° and 60° on request.  
Fabrication on order, returning not possible.

**Bend 90° welded  $R = 1,5 \times d_e$**

for butt welding and electrofusion

PE100  
SDR 17  
water 6 bar



$d_e$	Art. Nr.	Z	I	R
450	18 45 93 517	975	300	675
500	18 50 93 517	1100	350	750
560	18 56 93 517	1190	350	840
630	18 63 93 517	1295	350	945
710	18 71 93 517	1415	350	1065
800	18 80 93 517	1550	350	1200
900	18 90 93 517	1750	400	1350
1000	18 91 93 517	1900	400	1500

Reduced pressure class, see appendix B2 "Maximum operating pressure for pipes and fittings".  
30°, 45° and 60° on request.  
Fabrication on order, returning not possible.

## PE100 pressure fittings

Bend 90° welded  $R = 1,5 \times d_e$

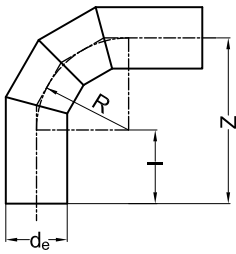
for butt welding and electrofusion

PE100  
SDR 11  
water 10 bar



$d_e$	Art. Nr.	Z	I	R
450	18 45 93 511	975	300	675
500	18 50 93 511	1100	350	750
560	18 56 93 511	1190	350	840
630	18 63 93 511	1295	350	945

Reduced pressure class, see appendix B2 "Maximum operating pressure for pipes and fittings".  
30°, 45° and 60° on request.  
Fabrication on order, returning not possible.



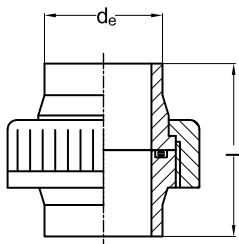
## PE100 pressure fittings

**Union complete short**  
with EPDM O-ring  
for butt welding

PE100  
SDR 11  
water 6 bar



$d_e$	Art. Nr.	L
20	43 01 06 511	110
25	43 02 06 511	110
32	43 03 06 511	110
40	43 04 06 511	110
50	43 05 06 511	110
63	43 06 06 511	110
75	43 07 06 511	110
90	43 09 06 511	180
110	43 11 06 511	180



Unions complete consist of:  
- PE union end and union bush  
- PVC nut  
- EPDM O-ring

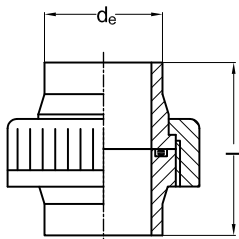
Depending on temperature change the maximum operating pressure can be reduced strongly.

**Union complete short**  
with FPM O-ring  
for butt welding

PE100  
SDR 11  
water 6 bar



$d_e$	Art. Nr.	L
20	43 01 07 511	110
25	43 02 07 511	110
32	43 03 07 511	110
40	43 04 07 511	110
50	43 05 07 511	110
63	43 06 07 511	110
75	43 07 07 511	110
90	43 09 07 511	180
110	43 11 07 511	180



Unions complete consist of:  
- PE union end and union bush  
- PVC nut  
- FPM O-ring

Depending on temperature change the maximum operating pressure can be reduced strongly.  
Collectioning on order.

## PE100 pressure fittings

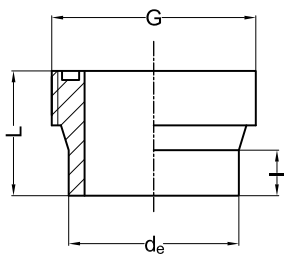
Union bush short

PE100  
SDR 11

for butt welding



$d_e$	Art. Nr.	L	I	G
20	83 01 01 511	55	13	1"
25	83 02 01 511	55	13	1¼"
32	83 03 01 511	55	14	1½"
40	83 04 01 511	55	16	2"
50	83 05 01 511	55	18	2¼"
63	83 06 01 511	55	20	2¾"
75	83 07 01 511	55	24	3½"
90	83 09 01 511	90	25	4"
110	83 11 01 511	90	28	5"



Thread according to EN-ISO 228.

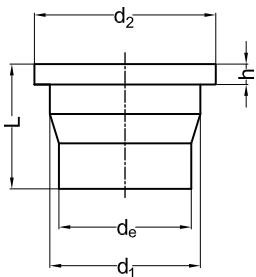
Union end short

PE100  
SDR 11

for butt welding



$d_e$	Art. Nr.	L	h	$d_1$	$d_2$
20	84 01 01 511	55	5	25,0	30,0
25	84 02 01 511	55	6	33,5	38,5
32	84 03 01 511	55	6	38,0	44,5
40	84 04 01 511	55	7	49,5	56,2
50	84 05 01 511	55	7	55,0	62,2
63	84 06 01 511	55	8	70,0	78,3
75	84 07 01 511	55	9	82,5	96,5
90	84 09 01 511	90	10	97,5	109,5
110	84 11 01 511	90	11	117,5	134,5



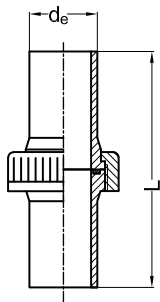
## PE100 pressure fittings

**Union complete long**  
with EPDM O-ring  
for butt welding and electrofusion

PE100  
SDR 11  
water 6 bar



$d_e$	Art. Nr.	L
20	43 01 10 511	190
25	43 02 10 511	190
32	43 03 10 511	190
40	43 04 10 511	190
50	43 05 10 511	190
63	43 06 10 511	190
75	43 07 10 511	260
90	43 09 10 511	300
110	43 11 10 511	340



Unions complete consist of:  
- PE union end and union bush  
- PVC nut  
- EPDM O-ring

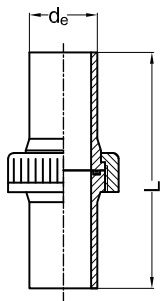
Depending on temperature change the maximum operating pressure can be reduced strongly.

**Union complete long**  
with FPM O-ring  
for butt welding and electrofusion

PE100  
SDR 11  
water 6 bar



$d_e$	Art. Nr.	L
20	43 01 11 511	190
25	43 02 11 511	190
32	43 03 11 511	190
40	43 04 11 511	190
50	43 05 11 511	190
63	43 06 11 511	190
75	43 07 11 511	260
90	43 09 11 511	300
110	43 11 11 511	340



Unions complete consist of:  
- PE union end and union bush  
- PVC nut  
- FPM O-ring

Depending on temperature change the maximum operating pressure can be reduced strongly.

Collectioning on order.

## PE100 pressure fittings

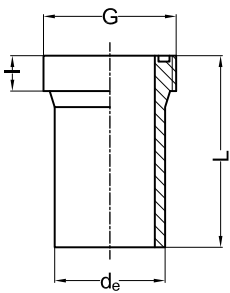
### Union bush long

PE100  
SDR 11

for butt welding and electrofusion



$d_e$	Art. Nr.	L	I	G
20	83 01 05 511	95	13	1"
25	83 02 05 511	95	13	1¼"
32	83 03 05 511	95	14	1½"
40	83 04 05 511	95	16	2"
50	83 05 05 511	95	18	2¼"
63	83 06 05 511	95	20	2¾"
75	83 07 05 511	130	24	3½"
90	83 09 05 511	150	25	4"
110	83 11 05 511	170	28	5"



Thread according to EN-ISO 228.

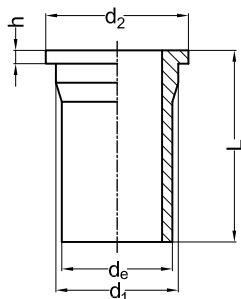
### Union end long

PE100  
SDR 11

for butt welding and electrofusion



$d_e$	Art. Nr.	L	h	$d_1$	$d_2$
20	84 01 05 511	95	5	25,0	30,0
25	84 02 05 511	95	6	33,5	38,5
32	84 03 05 511	95	6	38,0	44,5
40	84 04 05 511	95	7	49,5	56,2
50	84 05 05 511	95	7	55,0	62,2
63	84 06 05 511	95	8	70,0	78,3
75	84 07 05 511	130	9	82,5	96,5
90	84 09 05 511	150	10	97,5	109,5
110	84 11 05 511	170	11	117,5	134,5



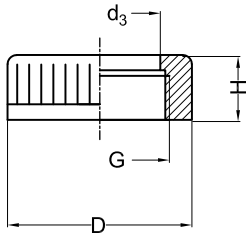
**Union nut**  
 for PE union end

PVC



$d_e$	Art. Nr.	D	G	$d_3$	H
20	85 01 00 410	43	1"	27	24
25	85 02 00 410	53	1¼"	36	27
32	85 03 00 410	60	1½"	41	30
40	85 04 00 410	74	2"	53	32
50	85 05 00 410	80	2¼"	59	36
63	85 06 00 410	103	2¾"	74	39
75	85 07 00 410	122	3½"	83	43
90	85 09 00 410	139	4"	98	49
110	85 11 00 410	164	5"	118	55

Thread according to EN-ISO 228.



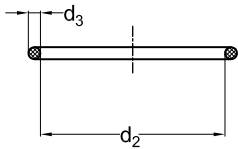
## PE100 pressure fittings

O-ring  
for PE union end

EPDM



$d_e$	Art. Nr.	$d_2$	$d_3$
20	48 01 09 000	21,8	3,5
25	48 02 09 000	28,2	3,5
32	48 03 09 000	34,5	3,5
40	48 04 09 000	43,8	5,3
50	48 05 09 000	50,2	5,3
63	48 06 09 000	66,1	5,3
75	48 07 09 000	78,8	5,3
90	48 09 09 000	94,6	5,3
110	48 11 09 000	113,7	7,0

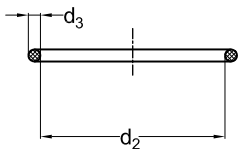


O-ring  
for PE union end

FPM



$d_e$	Art. Nr.	$d_2$	$d_3$
20	48 01 07 000	21,8	3,5
25	48 02 07 000	28,2	3,5
32	48 03 07 000	34,5	3,5
40	48 04 07 000	43,8	5,3
50	48 05 07 000	50,2	5,3
63	48 06 07 000	66,1	5,3
75	48 07 07 000	78,8	5,3
90	48 09 07 000	94,6	5,3
110	48 11 07 000	113,7	7,0

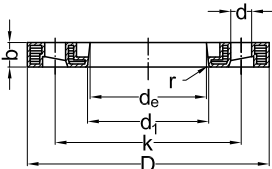


## PE100 pressure fittings

### Profile backing ring PP with ductile iron core

DIN 2501-PN10

for stub flange (butt welding connection)



d <sub>e</sub> /DN	Art. Nr.	bar	d <sub>1</sub>	D	k	b	d	n	M	r	kg
20/15	47 01 09 010 *	16	28	106	65	18	14	4	M12	3	0,4
25/20	47 02 09 010 *	16	34	118	75	18	14	4	M12	3	0,4
32/25	47 03 09 010 *	16	42	122	85	17	14	4	M12	3	0,4
40/32	47 04 09 010 *	16	51	142	100	17	18	4	M16	3	0,5
50/40	47 05 09 010 *	16	62	156	110	19	18	4	M16	3	0,7
63/50	47 06 09 010 *	16	78	171	125	20	18	4	M16	3	0,9
75/65	47 07 09 010 *	16	92	191	145	21	18	4	M16	3	1,0
90/80	47 09 09 010 *	16	108	206	160	21	18	8	M16	3	1,1
110/100	47 11 09 010 *	16	128	226	180	22	18	8	M16	3	1,5
125/100	47 12 09 010 *	16	135	226	180	23	18	8	M16	3	1,4
140/125	47 14 09 010 *	16	158	261	210	25	18	8	M16	3	1,7
160/150	47 16 09 010 *	16	178	296	240	28	22	8	M20	3	1,8
180/150	47 18 09 010 *	16	188	296	240	27	22	8	M20	4	1,9
200/200	47 20 09 010	16	235	350	295	32	22	8	M20	4	3,1
225/200	47 22 09 010	16	238	350	295	31	22	8	M20	4	3,1
250/250	47 25 09 010	16	288	412	350	36	22	12	M20	4	4,9
280/250	47 28 09 010	16	294	412	350	35	22	12	M20	4	4,4
315/300	47 31 09 010	16	338	462	400	42	22	12	M20	4	6,4
355/350	47 35 09 010	16	376	525	460	52	22	16	M20	6	11,1
400/400	47 40 09 010	16	430	586	515	56	26	16	M24	6	14,7
450/500	47 45 09 010	10	514	690	620	55	27	20	M24	6	20,3
500/500	47 50 09 010	10	530	690	620	55	27	20	M24	6	19,2
560/600	47 56 09 010	10	615	804	725	62	30	20	M27	6	30,0
630/600	47 63 09 010	10	642	804	725	62	30	20	M27	6	27,7
710/700	47 71 09 010	6	740	912	840	49	30	24	M27	5	28,6
800/800	47 80 09 010	6	843	1026	950	58	33	24	M30	5	39,3
900/900	47 90 09 010	6	947	1129	1050	62	33	24	M30	5	48,5

\* identical to DIN 2501-PN16

n = number of bolts.

bar = maximum operating pressure.

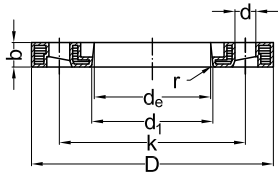
"DIN 2501-PN10" does not refer to the pressure class of the backing ring.

## PE100 pressure fittings

### Profile backing ring PP with ductile iron core

DIN 2501-PN10

for flange adaptor (socket connection)



$d_e$ /DN	Art. Nr.	bar	$d_1$	D	k	b	d	n	M	r	kg
20/15	47 01 09 010 *	16	28	106	65	18	14	4	M12	3	0,4
25/20	47 02 09 010 *	16	34	118	75	18	14	4	M12	3	0,4
32/25	47 03 09 010 *	16	42	122	85	17	14	4	M12	3	0,4
40/32	47 04 09 010 *	16	51	142	100	17	18	4	M16	3	0,5
50/40	47 05 09 010 *	16	62	156	110	19	18	4	M16	3	0,7
63/50	47 06 09 010 *	16	78	171	125	20	18	4	M16	3	0,9
75/65	47 07 09 010 *	16	92	191	145	21	18	4	M16	3	1,0
90/80	47 09 19 010	16	110	206	160	21	18	8	M16	3	1,2
110/100	47 11 19 010	16	133	226	180	22	18	8	M16	3	1,5
140/125	47 14 19 010	16	167	261	210	26	18	8	M16	3	1,9
160/150	47 16 19 010	16	190	296	240	28	22	8	M16	3	2,6
225/200	47 22 19 010	16	250	350	295	23	22	8	M20	3	2,7
250/250	47 25 19 010	16	277	403	350	35	22	12	M20	4	5,3
280/250	47 28 19 010	16	310	403	350	31	22	12	M20	4	3,8
315/300	47 31 19 010	16	348	458	400	37	22	12	M20	4	5,7

\* identical to profile backing ring PP with ductile iron core DIN 2501-PN10 for stub flange

$n$  = number of bolts.

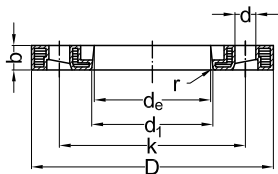
bar = maximum operating pressure.

"DIN 2501-PN10" does not refer to the pressure class of the backing ring.

### Profile backing ring PP with ductile iron core

ANSI 150 lb

for stub flange



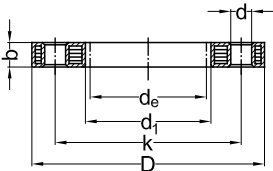
DN/ $d_e$	Art. Nr.	bar	$d_1$	D	k	b	d	n	kg
63/2"	47 83 09 010	16	78	164	121	18	19	4	0,8
90/3"	47 85 09 010	16	108	196	153	19	19	4	1,0
110/4"	47 86 09 010	16	128	237	191	25	19	8	1,8
160/6"	47 87 09 010	16	178	297	242	30	22	8	3,2
225/8"	47 88 09 010	16	238	354	299	34	22	8	5,1
250/10"	47 89 09 010	16	288	425	362	39	26	12	6,9
315/12"	47 90 29 010	16	338	497	432	51	26	12	12,8

$n$  = number of bolts.

bar = maximum operating pressure.

## PE100 pressure fittings

Backing ring PP with ductile iron core  
DIN 2501-PN10  
for stub flange



$d_e$ /DN	Art. Nr.	*	bar	$d_1$	D	k	b	d	n	M	kg
20/15	47 01 08 010	*	16	28	95	65	12	14	4	M12	0,3
25/20	47 02 08 010	*	16	34	105	75	14	14	4	M12	0,3
32/25	47 03 08 010	*	16	42	115	85	14	14	4	M12	0,4
40/32	47 04 08 010	*	16	51	140	100	16	18	4	M16	0,7
50/40	47 05 08 010	*	16	62	150	110	16	18	4	M16	0,7
63/50	47 06 08 010	*	16	78	165	125	19	18	4	M16	0,8
75/65	47 07 08 010	*	16	92	185	145	19	18	4	M16	1,1
90/80	47 09 08 010	*	16	108	200	160	21	18	8	M16	1,4
110/100	47 11 08 010	*	16	128	220	180	22	18	8	M16	1,6
125/100	47 12 08 010	*	16	135	220	180	22	18	8	M16	1,4
140/125	47 14 08 010	*	16	158	250	210	26	18	8	M16	2,0
160/150	47 16 08 010	*	16	178	285	240	27	22	8	M20	2,5
180/150	47 18 08 010	*	16	188	285	240	27	22	8	M20	2,3
200/200	47 20 08 010		16	235	340	295	28	22	8	M20	3,2
225/200	47 22 08 010		16	238	340	295	28	22	8	M20	3,2
250/250	47 25 08 010		16	288	406	350	31	22	12	M20	6,4
280/250	47 28 08 010		16	294	406	350	31	22	12	M20	6,3
315/300	47 31 08 010		16	338	460	400	34	22	12	M20	9,8
355/350	47 35 08 010		16	377	520	460	39	23	16	M20	15,0
400/400	47 40 08 010		16	430	580	515	43	27	16	M24	18,1
450/500	47 45 08 010		10	517	678	620	45	26	20	M24	25,0
500/500	47 50 08 010		10	533	678	620	45	26	20	M24	23,4
560/600	47 56 08 010		10	618	790	725	50	30	20	M27	33,7
630/600	47 63 08 010		10	645	790	725	50	30	20	M27	32,6

\* identical to DIN 2501-PN16

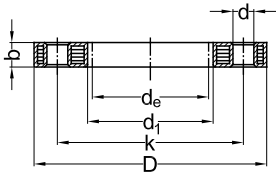
$n$  = number of bolts.

bar = maximum operating pressure.

"DIN 2501-PN10" does not refer to the pressure class of the backing ring.

## PE100 pressure fittings

Backing ring PP with ductile iron core  
ANSI 150 lb  
for stub flange



DN/d <sub>e</sub>	Art. Nr.	bar	d <sub>1</sub>	D	k	b	d	n	kg
20/1/2"	47 78 08 010	16	28	95	60,5	12	16	4	0,3
25/3/4"	47 79 08 010	16	34	102	69,9	12	16	4	0,3
32/1"	47 80 08 010	16	42	114	79,3	16	16	4	0,4
40/1 1/4"	47 81 08 010	16	51	130	88,9	16	16	4	0,5
50/1 1/2"	47 82 08 010	16	62	133	98,6	18	16	4	0,6
63/2"	47 83 08 010	16	78	162	120,6	18	20	4	0,9
75/2 1/2"	47 84 08 010	16	92	184	139,7	18	20	4	1,1
90/3"	47 85 08 010	16	111	194	152,4	18	20	4	1,0
110/4"	47 86 08 010	16	133	229	190,5	18	20	8	1,6
160/6"	47 87 08 010	16	178	283	241,3	24	22	8	2,5
200/8"	47 88 08 010	16	236	345	298,5	24	22	8	3,4
250/10"	47 89 08 010	16	288	412	361,9	27	25	12	5,9
315/12"	47 90 08 010	16	338	487	431,8	32	25	12	12,8
355/14"	47 91 08 010	16	376	533	476,2	42	28,5	12	15,7
400/16"	47 92 08 010	16	430	596	539,7	44	28,5	16	17,6

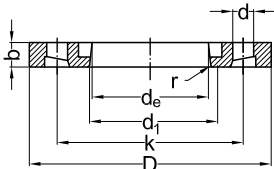
*n* = number of bolts.

*bar* = maximum operating pressure.

## PE100 pressure fittings

Profile backing ring ductile iron  
DIN 2501-PN10  
for stub flange

GGG40 epoxy coated



d <sub>e</sub> /DN	Art. Nr.	bar	d <sub>1</sub>	D	k	b	d	n	M	r	kg
50/40	47 05 13 010 *	16	62	150	110	16	18	4	M16	3	1,0
63/50	47 06 13 010 *	16	78	165	125	16	18	4	M16	3	1,1
75/65	47 07 13 010 *	16	92	185	145	16	18	4	M16	3	1,4
90/80	47 09 13 010 *	16	108	200	160	19	18	8	M16	3	1,6
110/100	47 11 13 010 *	16	128	220	180	19	18	8	M16	3	1,8
125/100	47 12 13 010 *	16	135	220	180	19	18	8	M16	3	1,7
140/125	47 14 13 010 *	16	158	250	210	19	18	8	M16	3	2,1
160/150	47 16 13 010 *	16	178	285	240	19	22	8	M20	3	2,6
180/150	47 18 13 010 *	10	188	285	240	19	22	8	M20	3	2,5
200/200	47 20 13 010	10	235	340	295	18	22	8	M20	3	3,5
225/200	47 22 13 010	10	238	340	295	18	22	8	M20	3	3,5
250/250	47 25 13 010	10	288	395	350	22	22	12	M20	3	5,3
280/250	47 28 13 010	10	294	395	350	22	22	12	M20	3	5,1
315/300	47 31 13 010	10	338	445	400	26	22	12	M20	3	6,6
355/350	47 35 13 010	10	376	505	460	30	22	16	M20	4	11,3
400/400	47 40 13 010	10	430	565	515	34	26	16	M24	4	14,2
450/500	47 45 13 010	10	517	670	620	42	26	20	M24	6	21,5
500/500	47 50 13 010	10	533	670	620	38	26	20	M24	4	18,7
560/600	47 56 13 010	10	618	785	725	50	30	20	M27	7	34,8
630/600	47 63 13 010	10	645	785	725	40	30	20	M27	4	26,4
710/700	47 71 13 010	6	740	900	840	45	30	24	M27	5	36,4
800/800	47 80 13 010	6	843	1015	950	53	33	24	M30	5	50,5
900/900	47 90 13 010	6	947	1115	1050	56	33	28	M30	5	55,8
1000/1000	47 91 13 010	6	1050	1230	1160	62	36	28	M33	5	71,1
1200/1200	47 92 13 010	4	1260	1455	1380	68	39	32	M36	6	101

\* identical to DIN 2501-PN16

*n* = number of bolts.

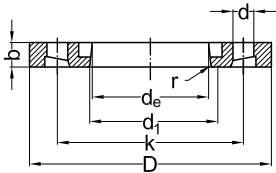
*bar* = maximum operating pressure.

"DIN 2501-PN10" does not refer to the pressure class of the backing ring.

## PE100 pressure fittings

Profile backing ring ductile iron  
DIN 2501-PN16  
for stub flange

GGG40 epoxy coated



$d_e$ /DN	Art. Nr.	bar	$d_1$	D	k	b	d	n	M	r	kg
50/40	47 05 13 010	16	62	150	110	16	18	4	M16	3	1,0
63/50	47 06 13 010	16	78	165	125	16	18	4	M16	3	1,1
75/65	47 07 13 010	16	92	185	145	16	18	4	M16	3	1,4
90/80	47 09 13 010	16	108	200	160	19	18	8	M16	3	1,6
110/100	47 11 13 010	16	128	220	180	19	18	8	M16	3	1,8
125/100	47 12 13 010	16	135	220	180	19	18	8	M16	3	1,7
140/125	47 14 13 010	16	158	250	210	19	18	8	M16	3	2,1
160/150	47 16 13 010	16	178	285	240	19	22	8	M20	3	2,6
180/150	47 18 13 010	16	188	285	240	19	22	8	M20	3	2,5
200/200	47 20 13 016	16	235	340	295	23	22	12	M20	3	4,0
225/200	47 22 13 016	16	238	340	295	23	22	12	M20	3	3,9
250/250	47 25 13 016	16	288	405	355	29	26	12	M24	3	6,6
280/250	47 28 13 016	16	294	405	355	29	26	12	M24	3	6,5
315/300	47 31 13 016	16	338	460	410	34	26	12	M24	3	8,6
355/350	47 35 13 016	16	376	520	470	39	26	16	M24	4	14,4
400/400	47 40 13 016	16	430	580	525	43	30	16	M27	4	17,0

$n$  = number of bolts.

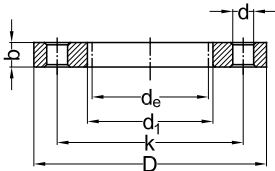
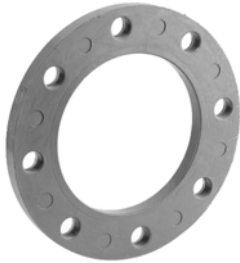
bar = maximum operating pressure.

"DIN 2501-PN16" does not refer to the pressure class of the backing ring.

**Backing ring GRP standard type**

DIN 2501-PN10

for stub flange



$d_e$ /DN	Art. Nr.		bar	$d_1$	D	k	b	d	n	M	kg
20/15	47 01 07 010	*	6	28	95	65	14	14	4	M12	0,2
25/20	47 02 07 010	*	6	34	105	75	14	14	4	M12	0,2
32/25	47 03 07 010	*	6	42	115	85	16	14	4	M12	0,3
40/32	47 04 07 010	*	6	51	140	100	16	18	4	M16	0,4
50/40	47 05 07 010	*	6	62	150	110	16	18	4	M16	0,4
63/50	47 06 07 010	*	6	78	165	125	16	18	4	M16	0,5
75/65	47 07 07 010	*	6	92	185	145	16	18	4	M16	0,6
90/80	47 09 07 010		6	108	200	160	18	18	8	M16	0,7
110/100	47 11 07 010		6	128	220	180	18	18	8	M16	0,8
125/100	47 12 07 010		6	135	220	180	18	18	8	M16	0,7
140/125	47 14 07 010		6	158	250	210	18	18	8	M16	1,0
160/150	47 16 07 010		6	178	285	240	18	23	8	M20	1,2
180/150	47 18 07 010		6	188	285	240	18	23	8	M20	1,1
200/200	47 20 07 010		6	235	340	295	25	23	8	M20	2,1
225/200	47 22 07 010		6	238	340	295	25	23	8	M20	2,1
250/250	47 25 07 010		6	288	395	350	28	23	12	M20	2,7
280/250	47 28 07 010		6	294	395	350	28	23	12	M20	2,5
315/300	47 31 07 010		6	338	445	400	30	23	12	M20	3,3
355/350	47 35 07 010		6	376	505	460	28	23	16	M20	4,2
400/400	47 40 07 010		6	430	565	515	32	27	16	M24	6,0
450/500	47 50 07 010		6	533	670	620	38	27	20	M24	8,6
500/500	47 50 07 010		6	533	670	620	38	27	20	M24	8,6

\* also suitable for flange adaptor (socket connection)

$n$  = number of bolts.

bar = maximum operating pressure.

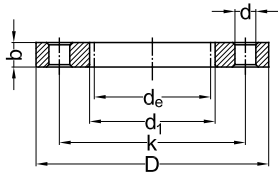
"DIN 2501-PN10" does not refer to the pressure class of the backing ring.

## PE100 pressure fittings

### Backing ring GRP heavy type

DIN 2501-PN10

for stub flange



$d_e$ /DN	Art. Nr.		bar	$d_1$	D	k	b	d	n	M	kg
63/50	47 06 06 010	*	10	78	165	125	18	18	4	M16	0,5
75/65	47 07 06 010	*	10	92	185	145	20	18	4	M16	0,7
90/80	47 09 06 010		10	108	200	160	22	18	8	M16	0,8
110/100	47 11 06 010		10	128	220	180	28	18	8	M16	1,2
125/100	47 12 06 010		10	135	220	180	28	18	8	M16	1,1
140/125	47 14 06 010		10	158	250	210	30	18	8	M16	1,6
160/150	47 16 06 010		10	178	285	240	30	23	8	M20	1,9
180/150	47 18 06 010		10	188	285	240	30	23	8	M20	1,8
200/200	47 20 06 010		10	235	340	295	32	23	8	M20	2,5
225/200	47 22 06 010		10	238	340	295	32	23	8	M20	2,4
250/250	47 25 06 010		10	288	395	350	34	23	12	M20	3,2
280/250	47 28 06 010		10	294	395	350	34	23	12	M20	3,0
315/300	47 31 06 010		10	338	445	400	36	23	12	M20	4,0
355/350	47 35 06 010		10	376	505	460	38	23	16	M20	5,6
400/400	47 40 06 010		10	430	565	515	42	27	16	M24	7,2
450/500	47 50 06 010		10	533	670	620	48	27	20	M24	10,4
500/500	47 50 06 010		10	533	670	620	48	27	20	M24	10,4
560/600	47 63 06 010		10	645	780	725	56	30	20	M27	13,2
630/600	47 63 06 010		10	645	780	725	56	30	20	M27	13,2

\* also suitable for flange adaptor (socket connection)

$n$  = number of bolts.

bar = maximum operating pressure.

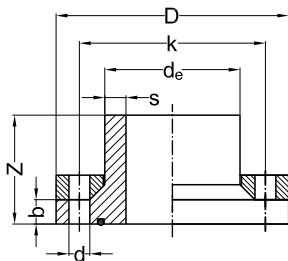
"DIN 2501-PN10" does not refer to the pressure class of the backing ring.

## PE100 pressure fittings

### Flange connection short

EPDM O-ring and hot dip galvanised steel backing ring DIN 2501-PN10  
for butt welding

PE100  
SDR 17  
water 10 bar



d <sub>e</sub> /DN	Art. Nr.	bar	Z	D	k	b	d	n	M	kg
90/65	47 06 09 017	10	90	185	145	30	18	4	M16	2,9
110/80	47 08 11 017	10	90	200	160	30	18	8	M16	3,6
140/100	47 10 14 017	10	90	220	180	30	18	8	M16	3,6
160/125	47 12 16 017	10	100	250	210	35	18	8	M16	4,7
180/125	47 12 18 017	10	125	250	210	35	18	8	M16	4,5
200/150	47 15 20 017	10	100	285	240	35	23	8	M20	5,7
250/200	47 20 25 017	10	100	340	295	40	23	8	M20	8,2
315/250	47 25 31 017	*	10	395	350	40	23	12	M20	11,5
355/300	47 30 35 017	10	110	445	400	40	23	12	M20	15,1
400/350	47 35 40 017	10	130	505	460	60	23	16	M20	21,7
450/400	47 40 45 017	10	130	565	515	60	27	16	M24	29,0
560/500	47 50 56 017	10	140	670	620	60	27	20	M24	42,3

\* different construction

n = number of bolts.

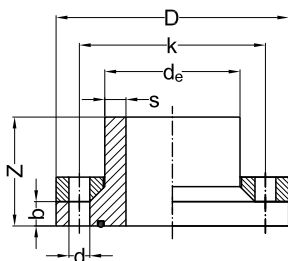
bar = maximum operating pressure.

For direct connection of valves without loss of cross section and without changing the nominal size.  
"DIN 2501-PN10" does not refer to the pressure class of the backing ring.

### Flange connection short

EPDM O-ring and hot dip galvanised steel backing ring DIN 2501-PN10  
for butt welding

PE100  
SDR 11  
water 16 bar



d <sub>e</sub> /DN	Art. Nr.	bar	Z	D	k	b	d	n	M	kg
90/65	47 06 09 011	10	90	185	145	30	18	4	M16	2,9
110/80	47 08 11 011	10	90	200	160	30	18	8	M16	3,6
140/100	47 10 14 011	10	90	220	180	30	18	8	M16	3,6
160/125	47 12 16 011	10	100	250	210	35	18	8	M16	4,7
180/125	47 12 18 011	10	125	250	210	35	18	8	M16	4,5
200/150	47 15 20 011	10	100	285	240	35	23	8	M20	5,7
250/200	47 20 25 011	10	100	340	295	40	23	8	M20	8,2
315/250	47 25 31 011	*	10	395	350	40	23	12	M20	11,5
355/300	47 30 35 011	10	110	445	400	40	23	12	M20	15,1
400/350	47 35 40 011	10	130	505	460	60	23	16	M20	21,7
450/400	47 40 45 011	10	130	565	515	60	27	16	M24	29,0
560/500	47 50 56 011	10	140	670	620	60	27	20	M24	42,3

\* different construction

n = number of bolts.

bar = maximum operating pressure.

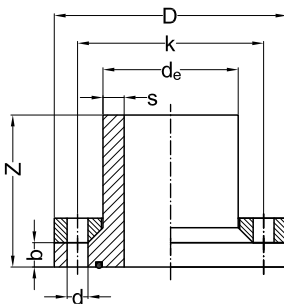
For direct connection of valves without loss of cross section and without changing the nominal size.  
"DIN 2501-PN10" does not refer to the pressure class of the backing ring.

## PE100 pressure fittings

### Flange connection long

EPDM O-ring and hot dip galvanised steel backing ring DIN 2501-PN10  
for butt welding and electrofusion

PE100  
SDR 17  
water 10 bar



$d_e$ /DN	Art. Nr.	bar	Z	D	k	b	d	n	M	kg	
90/65	47 06 09 117	10	300	185	145	30	18	4	M16	3,3	
110/80	47 08 11 117	10	300	200	160	30	18	8	M16	4,3	
140/100	47 10 14 117	10	300	220	180	30	18	8	M16	4,6	
160/125	47 12 16 117	10	300	250	210	35	18	8	M16	6,1	
180/125	47 12 18 117	10	300	250	210	35	18	8	M16	6,2	
200/150	47 15 20 117	10	300	285	240	35	23	8	M20	7,8	
250/200	47 20 25 117	10	300	340	295	40	23	8	M20	11,5	
315/250	47 25 31 117	*	10	300	395	350	40	23	12	M20	16,8
355/300	47 30 35 117	10	300	445	400	40	23	12	M20	21,8	
400/350	47 35 40 117	10	400	505	460	60	23	16	M20	30,2	
450/400	47 40 45 117	10	400	565	515	60	27	16	M24	39,4	
560/500	47 50 56 117	10	400	670	620	60	27	20	M24	58,9	

\* different construction

$n$  = number of bolts.

bar = maximum operating pressure.

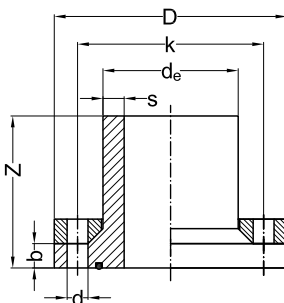
For direct connection of valves without loss of cross section and without changing the nominal size.

"DIN 2501-PN10" does not refer to the pressure class of the backing ring.

### Flange connection long

EPDM O-ring and hot dip galvanised steel backing ring DIN 2501-PN10  
for butt welding and electrofusion

PE100  
SDR 11  
water 16 bar



$d_e$ /DN	Art. Nr.	bar	Z	D	k	b	d	n	M	kg	
90/65	47 06 09 111	10	300	185	145	30	18	4	M16	3,5	
110/80	47 08 11 111	10	300	200	160	30	18	8	M16	4,6	
140/100	47 10 14 111	10	300	220	180	30	18	8	M16	5,1	
160/125	47 12 16 111	10	300	250	210	35	18	8	M16	6,7	
180/125	47 12 18 111	10	300	250	210	35	18	8	M16	7,0	
200/150	47 15 20 111	10	300	285	240	35	23	8	M20	8,9	
250/200	47 20 25 111	10	300	340	295	40	23	8	M20	13,1	
315/250	47 25 31 111	*	10	300	395	350	40	23	12	M20	19,3
355/300	47 30 35 111	10	300	445	400	40	23	12	M20	25,0	
400/350	47 35 40 111	10	400	505	460	60	23	16	M20	34,2	
450/400	47 40 45 111	10	400	565	515	60	27	16	M24	44,8	
560/500	47 50 56 111	10	400	670	620	60	27	20	M24	66,8	

\* different construction

$n$  = number of bolts.

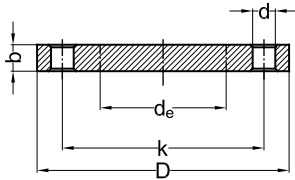
bar = maximum operating pressure.

For direct connection of valves without loss of cross section and without changing the nominal size.

"DIN 2501-PN10" does not refer to the pressure class of the backing ring.

## PE100 pressure fittings

### Blind flange PP with ductile iron core DIN 2501-PN10



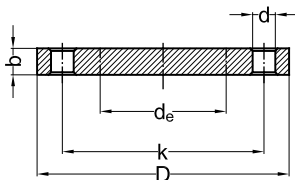
$d_e/DN$	Art. Nr.	bar	D	k	b	d	n	M	kg
20/15	47 01 85 010	16	95	65	12	14	4	M12	0,3
25/20	47 02 85 010	16	105	75	12	14	4	M12	0,4
32/25	47 03 85 010	16	115	85	16	14	4	M12	0,6
40/32	47 04 85 010	16	140	100	16	18	4	M16	0,8
50/40	47 05 85 010	16	150	110	18	18	4	M16	0,9
63/50	47 06 85 010	16	165	125	18	18	4	M16	1,2
75/65	47 07 85 010	16	185	145	18	18	4	M16	1,7
90/80	47 09 85 010	16	200	160	18	18	8	M16	2,2
110/100	47 11 85 010	16	220	180	18	18	8	M16	2,8
125/100	47 11 85 010	16	220	180	18	18	8	M16	2,8
140/125	47 14 85 010	16	250	210	24	18	8	M16	4,0
160/150	47 16 85 010	16	285	240	24	22	8	M20	5,1
180/150	47 16 85 010	16	285	240	24	22	8	M20	5,2
200/200	47 20 85 010	16	340	295	24	22	8	M20	7,7
225/200	47 20 85 010	16	340	295	24	22	8	M20	7,7
250/250	47 25 85 010	16	400	350	30	22	12	M20	14,4
280/250	47 25 85 010	16	400	350	30	22	12	M20	15,7
315/300	47 31 85 010	16	463	400	34	22	12	M20	26,5
355/350	47 35 85 010	10	515	460	42	22	16	M20	39,2
400/400	47 40 85 010	10	574	515	46	27	16	M24	50,1

$n$  = number of bolts.

bar = maximum operating pressure.

"DIN 2501-PN10" does not refer to the pressure class of the backing ring.

### Blind flange steel Rilsan coated DIN 2501-PN10



$d_e/DN$	Art. Nr.	bar	D	k	b	d	n	M	kg
450/500	47 50 55 010	10	670	620	26	32	20	M24	87,0
500/500	47 50 55 010	10	670	620	26	32	20	M24	87,0
560/600	47 63 55 010	10	780	725	30	35	20	M27	106,0
630/600	47 63 55 010	10	780	725	30	35	20	M27	106,0
710/700	47 71 55 010	10	895	840	30	40	24	M27	150,0
800/800	47 80 55 010	10	1015	950	33	44	24	M30	190,0

$n$  = number of bolts.

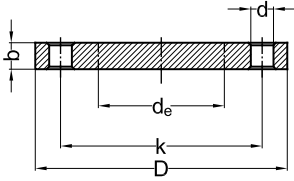
bar = maximum operating pressure.

"DIN 2501-PN10" does not refer to the pressure class of the backing ring.

Fabrication on order, returning not possible.

## PE100 pressure fittings

Blind flange PP with ductile iron core  
ANSI 150 lb



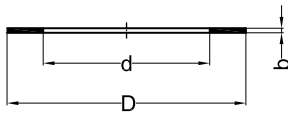
$d_e$ /DN	Art. Nr.	bar	D	k	b	d	n	kg
20/1/2"	47 78 05 010	16	95	60,5	12	16	4	0,3
25/3/4"	47 79 05 010	16	102	69,9	12	16	4	0,3
32/1"	47 80 05 010	16	114	79,3	16	16	4	0,5
40/1 1/4"	47 81 05 010	16	130	88,9	16	16	4	0,8
50/1 1/2"	47 82 05 010	16	133	98,6	18	16	4	0,8
63/2"	47 83 05 010	16	162	120,6	18	20	4	1,3
75/2 1/2"	47 84 05 010	16	184	139,7	18	20	4	1,5
90/3"	47 85 05 010	16	194	152,4	18	20	4	1,9
110/4"	47 86 05 010	16	229	190,5	18	20	8	3,0
160/6"	47 87 05 010	16	283	241,3	24	22	8	4,9
200/8"	47 88 05 010	16	345	298,5	24	22	8	7,7
250/10"	47 89 05 010	10	412	361,9	27	25	12	15,0
315/12"	47 90 05 010	10	487	431,8	32	25	12	29,0

$n$  = number of bolts.

bar = maximum operating pressure.

**Gasket flat EPDM**

for stub flanges SDR 17



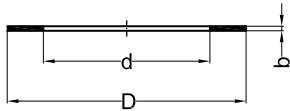
$d_e$ /DN	Art. Nr.	d	D	b
63/50	47 06 13 810	58	107	3
75/65	47 07 13 810	69	127	3
90/80	47 09 13 810	84	142	3
110/100	47 11 13 810	100	162	3
125/100	47 12 13 810	114	162	3
140/125	47 14 13 810	127	192	3
160/150	47 16 13 810	146	218	3
180/150	47 18 13 810	164	218	3
200/200	47 20 13 810	181	273	3
225/200	47 22 13 810	203	273	3
250/250	47 25 13 810	226	328	3
280/250	47 28 13 810	252	328	3
315/300	47 31 13 810	283	378	3
355/350	47 35 13 810	319	435	3
400/400	47 40 13 810	359	489	3
450/500	47 45 13 810	403	594	3
500/500	47 50 13 810	447	594	3
560/600	47 56 13 810	494	695	3
630/600	47 63 13 810	555	695	3
710/700	47 71 13 810	630	810	3
800/800	47 80 13 810	710	915	3
900/900	47 90 13 810	800	1020	3
1000/1000	47 91 13 810	885	1120	3

Suitable for flange connections with maximum operating pressure water 10 bar.  
For pressure class >10 bar we recommend our profile gaskets.

## PE100 pressure fittings

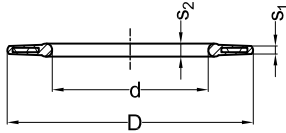
Gasket flat EPDM

for stub flanges SDR 11



$d_e$ /DN	Art. Nr.	d	D	b
20/15	47 01 13 910	16	51	3
25/20	47 02 13 910	22	61	3
32/25	47 03 13 910	28	71	3
40/32	47 04 13 910	34	82	3
50/40	47 05 13 910	42	92	3
63/50	47 06 13 910	53	107	3
75/65	47 07 13 910	63	127	3
90/80	47 09 13 910	76	142	3
110/100	47 11 13 910	93	162	3
125/100	47 12 13 910	105	162	3
140/125	47 14 13 910	117	192	3
160/150	47 16 13 910	135	218	3
180/150	47 18 13 910	151	218	3
200/200	47 20 13 910	168	273	3
225/200	47 22 13 910	188	273	3
250/250	47 25 13 910	203	328	3
280/250	47 28 13 910	233	328	3
315/300	47 31 13 910	262	378	3
355/350	47 35 13 910	294	435	3
400/400	47 40 13 910	331	489	3
450/500	47 45 13 910	372	594	3
500/500	47 50 13 910	413	594	3
560/600	47 56 13 910	451	695	3
630/600	47 63 13 910	507	695	3

Suitable for flange connections with maximum operating pressure water 10 bar.  
For pressure class >10 bar we recommend our profile gaskets.

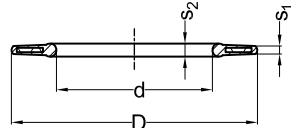
**Profile gasket EPDM**  
 with steel core  
 for stub flanges SDR 17


$d_e/DN$	Art. Nr.	d	D	$s_1$	$s_2$
63/50	47 06 13 610	58	107	4	5
75/65	47 07 13 610	69	127	4	5
90/80	47 09 13 610	84	142	4	5
110/100	47 11 13 610	100	162	5	6
125/100	47 12 13 610	114	162	5	6
140/125	47 14 13 610	127	192	5	6
160/150	47 16 13 610	146	218	6	8
180/150	47 18 13 610	164	218	6	8
200/200	47 20 13 610	181	273	6	8
225/200	47 22 13 610	203	273	6	8
250/250	47 25 13 610	226	328	6	8
280/250	47 28 13 610	252	328	6	8
315/300	47 31 13 610	283	378	6	8
355/350	47 35 13 610	319	435	6	8
400/400	47 40 13 610	359	489	6	8
450/500	47 45 13 610	403	594	7	10
500/500	47 50 13 610	447	594	7	10
560/600	47 56 13 610	494	695	7	10
630/600	47 63 13 610	555	695	7	10

Suitable for flange connections with maximum operating pressure water 16 bar.  
 Not allowed for potable water application.  
 NBR on request.

## PE100 pressure fittings

Profile gasket EPDM  
with steel core  
for stub flanges SDR 11

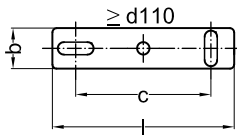
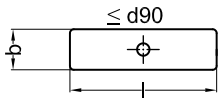
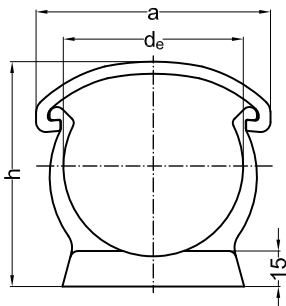


$d_e$ /DN	Art. Nr.	d	D	$s_1$	$s_2$
25/20	47 02 13 710	22	61	3	4
32/25	47 03 13 710	28	71	3	4
40/32	47 04 13 710	34	82	3	4
50/40	47 05 13 710	42	92	3	4
63/50	47 06 13 710	53	107	4	5
75/65	47 07 13 710	63	127	4	5
90/80	47 09 13 710	76	142	4	5
110/100	47 11 13 710	93	162	5	6
125/100	47 12 13 710	105	162	5	6
140/125	47 14 13 710	117	192	5	6
160/150	47 16 13 710	135	218	6	8
180/150	47 18 13 710	151	218	6	8
200/200	47 20 13 710	168	273	6	8
225/200	47 22 13 710	188	273	6	8
250/250	47 25 13 710	208	328	6	8
280/250	47 28 13 710	233	328	6	8
315/300	47 31 13 710	262	378	6	8
355/350	47 35 13 710	294	438	6	8
400/400	47 40 13 710	331	489	6	8
450/500	47 45 13 710	372	594	7	10
500/500	47 50 13 710	413	594	7	10
560/600	47 56 13 710	451	695	7	10
630/600	47 63 13 710	507	695	7	10

Suitable for flange connections with maximum operating pressure water 16 bar.  
Not allowed for potable water application.  
NBR on request.

**Pipe clip - metric with retaining clip**

PP



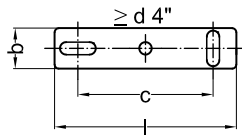
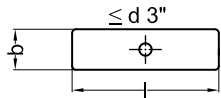
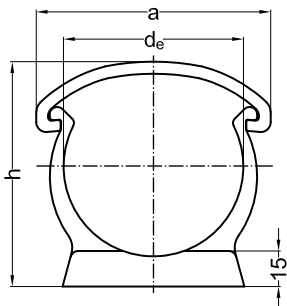
$d_e$	Art. Nr.	a	b	h	l	c
16	70 00 01 200	26	18	33	16	
20	70 01 01 200	33	14	38	20	
25	70 02 01 200	41	14	44	25	
32	70 03 01 200	49	15	51	32	
40	70 04 01 200	58	16	60	40	
50	70 05 01 200	68	17	71	60	
63	70 06 01 200	83	18	84	63	
75	70 07 01 200	96	19	97	75	
90	70 09 01 200	113	20	113	90	
110	70 11 01 200	139	23	134	125	40
125	70 12 01 200	158	25	151	140	60
140	70 14 01 200	177	27	167	155	70
160	70 16 01 200	210	30	190	180	90
180	70 18 01 200	237	33	211	200	100

Easy mounting of (plastic) pipe systems indoor to floor, wall or ceiling.  
 Outdoor mounting with UV degradation restriction.  
 1 to 3 screws for solid connection to mounting surface.  
 Unrestricted axial pipe movement (expansion and contraction).  
 Prevents sideward movement.  
 Adapts radial expansion at elevated temperature.  
 No notch effect on pipe.  
 Colour grey RAL 7037.

## GOEMA pipe clips

Pipe clip - inches with retaining clip

PP

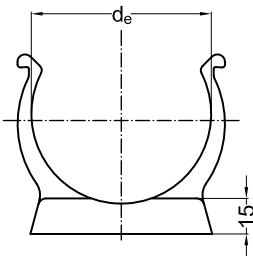


$d_e$	Art. Nr.	a	b	h	l	c
3/8"	70 77 01 200	26	13	34	16	
1/2"	70 78 01 200	33	14	39	20	
3/4"	70 79 01 200	41	14	45	25	
1"	70 80 01 200	49	15	52	32	
1 1/4"	70 81 01 200	58	16	61	40	
1 1/2"	70 82 01 200	68	17	67	50	
2"	70 83 01 200	83	18	80	63	
2 1/2"	70 84 01 200	96	19	96	75	
3"	70 85 01 200	118	20	110	90	
4"	70 86 01 200	140	25	135	140	60
6"	70 88 01 200	197	30	196	180	90

Easy mounting of (plastic) pipe systems indoor to floor, wall or ceiling.  
 Outdoor mounting with UV degradation restriction.  
 1 to 3 screws for solid connection to mounting surface.  
 Unrestricted axial pipe movement (expansion and contraction).  
 Prevents sideward movement.  
 Adapts radial expansion at elevated temperature.  
 No notch effect on pipe.  
 Colour grey RAL 7037.

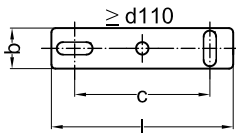
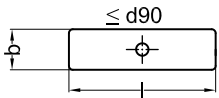
**Pipe clip - metric  
without retaining clip**

PP



$d_e$	Art. Nr.	b	l	c
16	70 00 02 200	13	16	
20	70 01 02 200	14	20	
25	70 02 02 200	14	25	
32	70 03 02 200	15	32	
40	70 04 02 200	16	40	
50	70 05 02 200	17	50	
63	70 06 02 200	18	63	
75	70 07 02 200	19	75	
90	70 09 02 200	20	90	
110	70 11 02 200	23	125	40
125	70 12 02 200	25	140	60
140	70 14 02 200	27	155	70
160	70 16 02 200	30	180	90
180	70 18 02 200	33	200	100

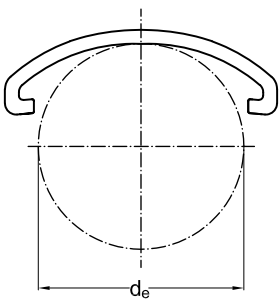
Easy mounting of (plastic) pipe systems indoor to floor, wall or ceiling.  
 Outdoor mounting with UV degradation restriction.  
 1 to 3 screws for solid connection to mounting surface.  
 Unrestricted axial pipe movement (expansion and contraction).  
 Prevents sideward movement.  
 Adapts radial expansion at elevated temperature.  
 No notch effect on pipe.  
 Colour grey RAL 7037.



## GOEMA pipe clips

Retaining clip - metric  
for pipe clip

PP

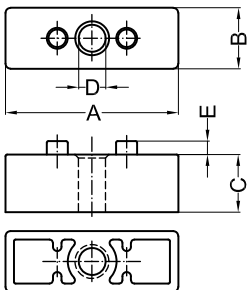


d <sub>e</sub>	Art. Nr.
16	70 00 03 200
20	70 01 03 200
25	70 02 03 200
32	70 03 03 200
40	70 04 03 200
50	70 05 03 200
63	70 06 03 200
75	70 07 03 200
90	70 09 03 200
110	70 11 03 200
125	70 12 03 200
140	70 14 03 200
160	70 16 03 200
180	70 18 03 200

Use of retaining clip prevents pipe to be pushed out of clip.  
Colour grey RAL 7037.

Distance plate for pipe clip

PP



d <sub>e</sub>	Art. Nr.	A	B	C	D	E
32	70 03 07 200	33	16	14	8	4
40	70 04 07 200	41	17	17	8	4
50	70 05 07 200	51	18	17	8	4
63	70 06 07 200	64	19	22,5	8	4
75	70 07 07 200	76	20	34,5	8	4

For alignment of pipe system with FIP valves.  
Colour grey RAL 7037.

